



Digimap[®]

<https://digimap.edina.ac.uk>

Download Data User Guide

The screenshot displays the Digimap web interface. On the left, the 'Download Data' sidebar is open, showing a search bar, 'Select Area of Interest' options, and a table of available data products. The main map area shows a geographical map of the Poole area with a yellow selection area. The interface includes various navigation and tool icons at the top and bottom.

Product	Order Size
<input checked="" type="checkbox"/> 1:10 000 Geology	(11/50) tiles >
<input type="checkbox"/> 1:25 000 Geology	(0/30) tiles >
<input checked="" type="checkbox"/> 1:50 000 Geology	(1/30) tiles >
<input type="checkbox"/> GeoCoast	Complete >

Buttons: Add To Basket, View Basket

Map Status: Current selection: 67.35 km²



CONTENTS

Contents	2
What is Downloading Data?.....	3
This guide.....	3
Get started.....	3
Find your location	3
Search box	4
Reference Grids	4
Select your area of interest.....	5
Draw Options	5
Use Coordinates.....	7
Select Visible Area.....	7
Use Tile Name	7
Import Polygons.....	8
Copying drawings for download	9
Select map data products	10
View available products	10
View product details	10
Select Products	10
Add to Basket.....	11
Basket options	11
Selecting options.....	12
Delete a map product	12
Add more data	13
Place your order	13
Download data	14
Download File	15
Reorder Data	15



WHAT IS DOWNLOADING DATA?

Digimap offers a function which allows you to download raw map data for use in other application software such as GIS or CAD. You can find the data download function in the left hand panel of Digimap. The data in each collection are available in a range of different formats. The process of downloading data is the same in every collection, although there are variations in the products and formats available.

THIS GUIDE

This User Guide is designed to introduce you to the steps involved in downloading map data. By the end of this guide you will be able to:

1. Select your area of interest.
2. Select your map data products.
3. Select options, such as data format, date and style.
4. Download your map data.

GET STARTED

1. Login at <https://digimap.edina.ac.uk>
2. Select your collection.
3. Select Download Data from the side bar.



FIND YOUR LOCATION

The first step is to centre the map on your location.

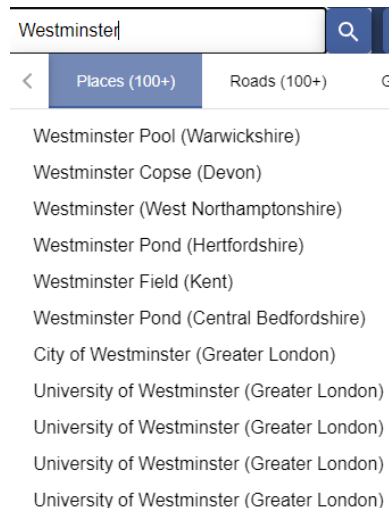
Once you are viewing the Download Data tab in the left hand panel, the maps in the map window on the right are only to help you identify your area of interest. They do not reflect the map data you will download.

- Double click or double tap on the map to zoom into your location, or
- Select plus + on the scale bar or keyboard to zoom in, or
- Search.



Search box

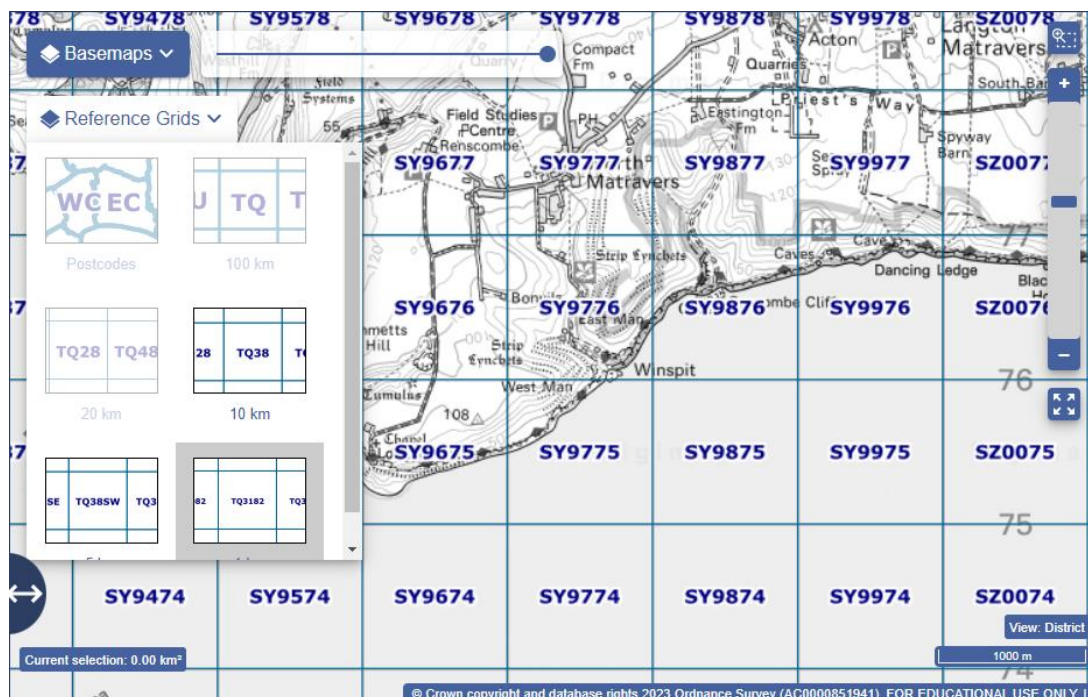
1. Enter search term: place name, full or partial postcode, grid reference, easting & northing or latitude & longitude.
2. Select magnifying glass icon.
3. Select your place from the list.
4. Your map is centred on your place.



Reference Grids

You can select a reference grid, such as postcodes or National Grid squares to overlay on your map. These are provided to help you identify your location.

1. Select the Reference Grids button, on the map window.
2. Select a reference grid. Note that the available grids will change as you zoom in or out.



SELECT YOUR AREA OF INTEREST

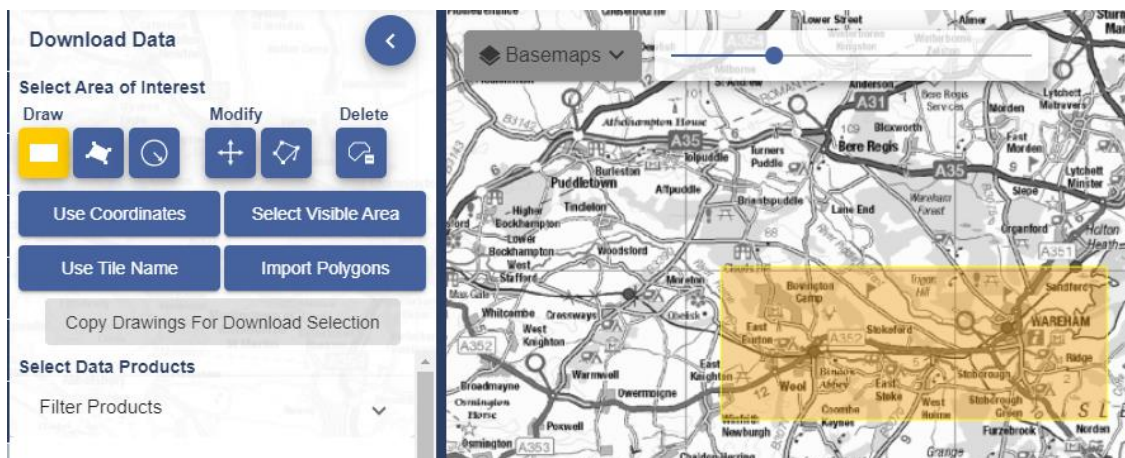
When you have found your location, you need to highlight your area of interest on the map. You will receive map data for the area you highlight.

There are several methods to help you do this, found in the Select Area of Interest on the sidebar.



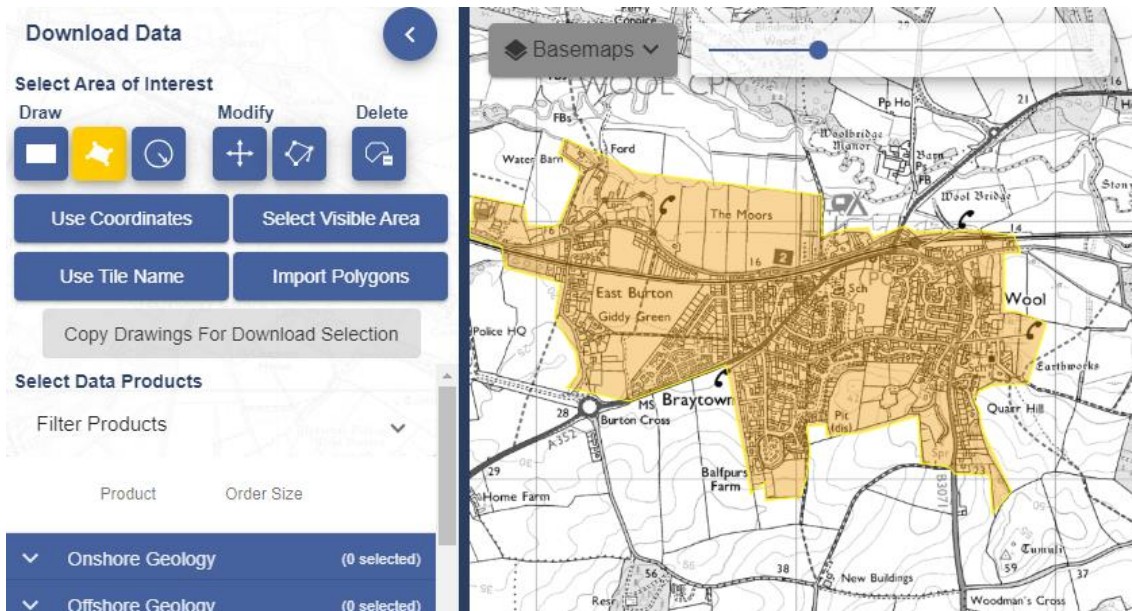
Draw Options

1. Draw rectangle:
 - a. Go to the sidebar on the left of Download Data.
 - b. Select the draw rectangle tool, under Draw.
 - c. Click or touch the map where you want to start drawing your area.
 - d. Drag in any direction to draw your rectangle.
 - e. Click or touch again to finish.
 - f. Move on to [Select Map Data Products](#).



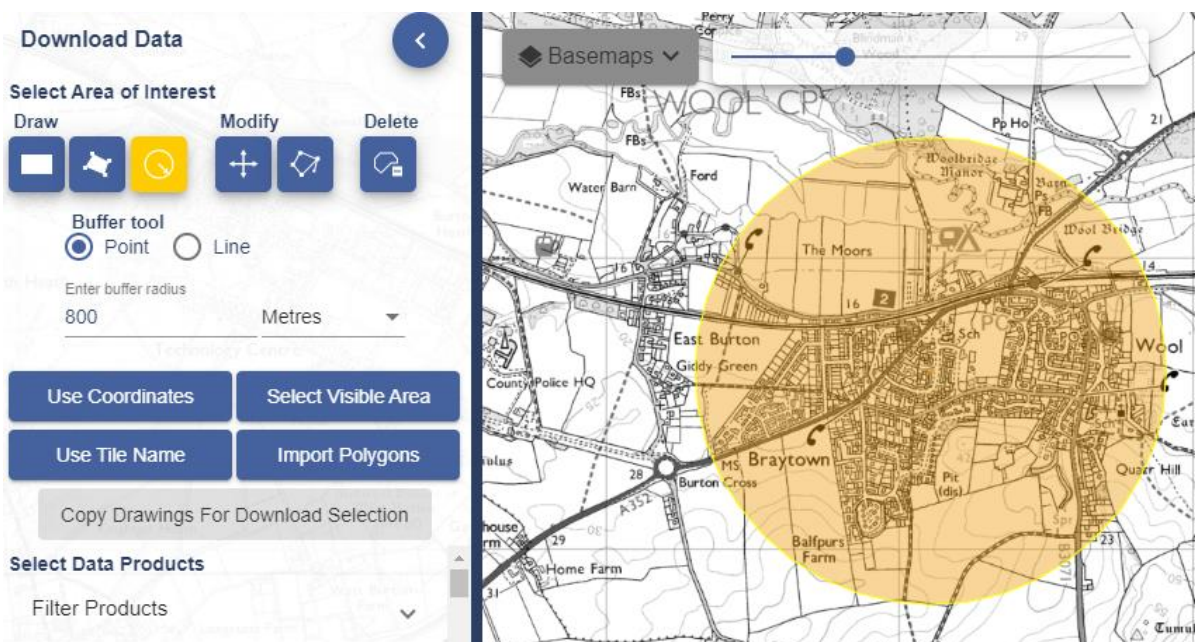
2. Draw polygon:
 - a. Go to the sidebar on the left of Download Data.
 - b. Select the draw polygon tool, under Draw.
 - c. Click or touch the map where you want to start drawing your area.
 - d. Select the points on the map to draw your polygon.
 - e. Click or touch again to finish.
 - f. Move on to [Select Map Data Products](#).





3. Draw buffer:

- a. Go to the sidebar on the left of Download Data.
- b. Select the buffer tool, under Draw.
- c. Select Point or Line buffer.
- d. Enter the radius of your buffer, in metres or kilometres.
- e. For a point buffer, select a point on the map to be the centre.
- f. For a line buffer, click at each point of the line and double click to finish.
- g. Your buffer will be highlighted on the map.
- h. Move on to [Select Map Data Products](#).



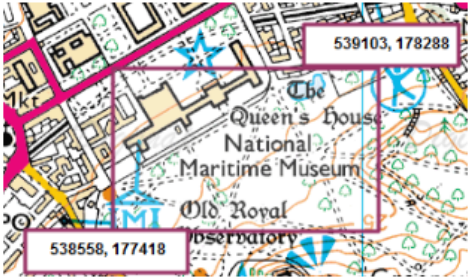
Use Coordinates

1. Select the Use Coordinates button.
2. Enter the coordinates for the upper right and lower left corners of your area.
3. Select Go.
4. Your area will be highlighted on the map.
5. Move on to [Select Map Data Products](#).

Use Coordinates

Define Bounding Box Define Square Buffer

Enter the coordinates for the upper right and lower left corners of the area you want to select:



National Grid Latitude / Longitude

Easting *	Northing *
392579	669636

Easting *	Northing *
390483	668237

Get coordinates of the selected area to edit:

Get coordinates of the whole map window:

Select Visible Area

1. Select the Select Visible Area button.
2. The whole map window will be highlighted.
3. Move on to [Select Map Data Products](#).

Use Tile Name

Remember you can turn on [reference grids](#) to help you identify a tile name.

1. Select the Use Tile Name button.
2. Enter an Ordnance Survey tile, for example NT27SE. In Geology and Marine you can enter Geology and Marine tile names.



Use Tile Name
✕

Enter Geology Tile Name

Enter OS Tile Name

Enter the Ordnance Survey tile name to select the area it covers:

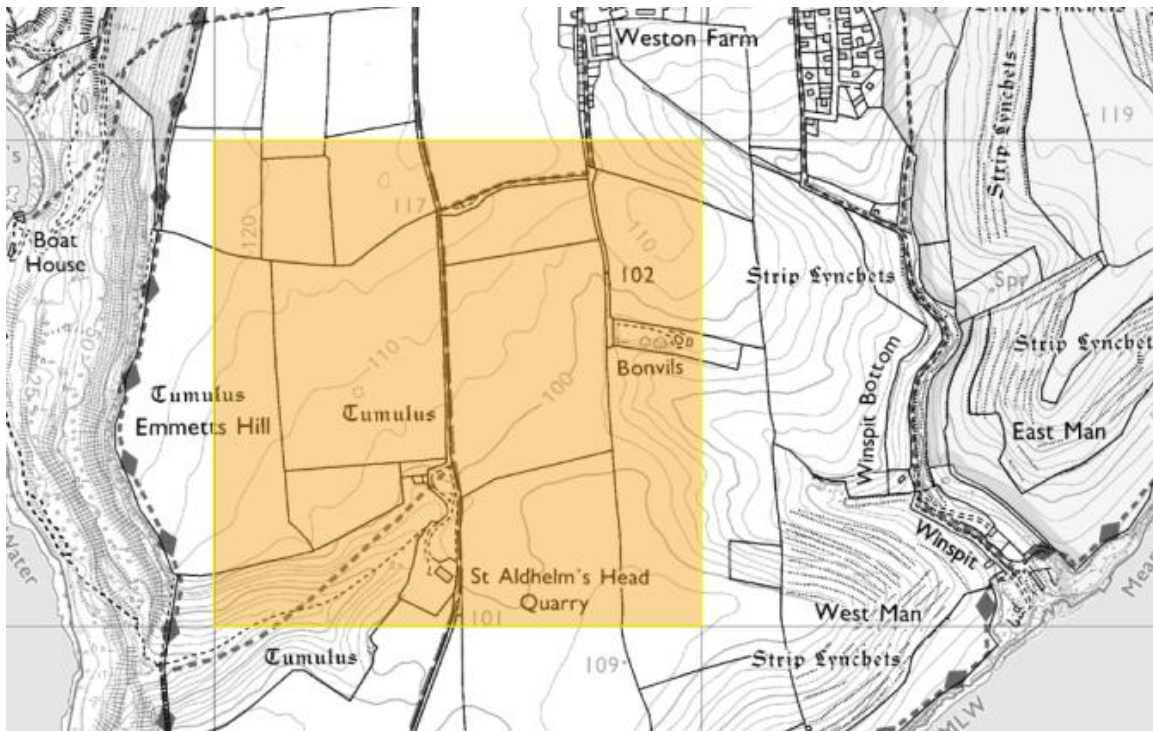
Tile name (e.g. NT27SE)

SY967d

(20km tiles not supported)

Go

3. Select Go.
4. Your tile will be highlighted on the map.
5. Move to on Select Map Data Products.



Import Polygons

You can import a file of polygons to identify your location(s).

Your file must be 10mb maximum.

Formats are Shapefile (zip), KML or GeoJSON.

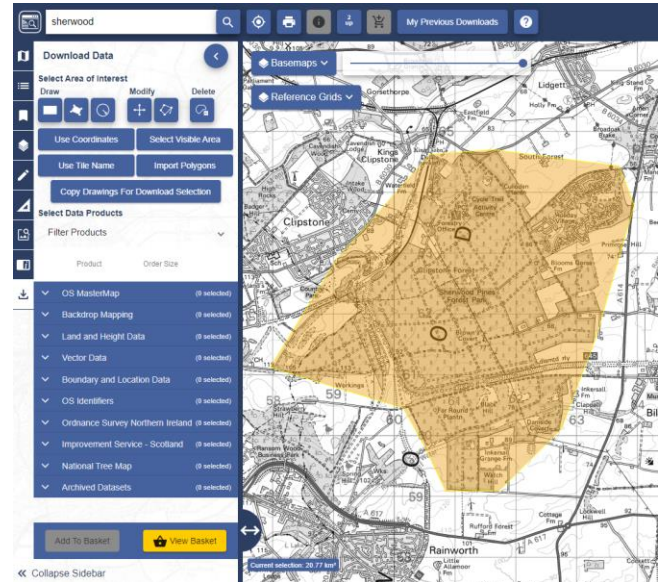
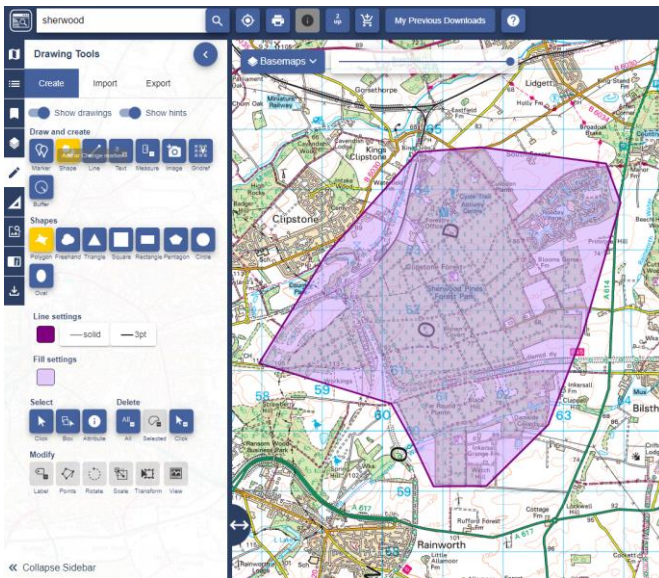
1. Select Import Polygons.
2. Select Choose File.
3. Navigate to your file.
4. Select Import.
5. Move to on Select Map Data Products.



Copying drawings for download

You can use your own drawing to select your area of interest for downloading.

1. Create your drawing using the Drawing Tool.
2. Click on the Download Data tool to move from one screen to another.
3. Click on Copy Drawings For Download Selection, your drawing will appear.
4. Move on to [Select Map Data Products](#).



SELECT MAP DATA PRODUCTS

Each download tool has a Select Data Products area. The products are typically grouped into categories.

View available products

Select the down arrow next to any category to open it and see the available products.

View product details

1. Select the right arrow next to any product.
2. A Product Information box will open with details such as date and data format.
3. Select More Info button for further details.

The screenshot shows a web interface for downloading data. On the left, the 'Download Data' panel includes a 'Select Area of Interest' section with 'Draw', 'Modify', and 'Delete' options, and a 'Select Data Products' section with a filter dropdown and a list of products. The 'Onshore Boreholes Index' product is selected. On the right, the 'Product Information' panel displays details for the 'Single Onshore Boreholes Index', including scale, version, data format, and a map thumbnail.

Download Data

Select Area of Interest

Draw Modify Delete

Use Coordinates Select Visible Area

Use Tile Name Import Polygons

Copy Drawings For Download Selection

Select Data Products

Filter Products

Product	Order Size
Onshore Geology	(0 selected)
Offshore Geology	(0 selected)
Rock Information	(1 selected)
<input checked="" type="checkbox"/> Lexicon of Named Rock Units	Complete >
<input type="checkbox"/> Onshore Borehole Index	Complete <
Groundwater	(0 selected)
The Coal Authority	(0 selected)
Archived Datasets	(0 selected)

Product Information

Single Onshore Boreholes Index

Scale: 1:50 000

Current Version: July 2023

Data Format: SHAPE

Data Allowance: No limit

Grid Size: Boundary Area

Terms of Use: [BGS OpenGeoscience Licence](#)

Copyright: Contains British Geological Survey materials © NERC 2023

The Borehole Index contains information about:

- Borehole locations
- Borehole names and depths
- Borehole ID codes

More info...

Select Products

- Check the box next to any data product you wish to order.
- You can order data from multiple categories – just open each category and select your required products.
- You can order as many data products as you wish, but some products limit the amount of data you can request in one order.



▼	Backdrop Mapping	(2 selected)
^	Land and Height Data	(1 selected)
<input checked="" type="checkbox"/>	OS Terrain 50 Contours	No limit >
<input type="checkbox"/>	OS Terrain 50 DTM	No limit >
▼	Vector Data	(1 selected)
▼	Boundary and Location Data	(1 selected)
▼	OS Identifiers	(0 selected)
▼	Ordnance Survey Northern Ireland	(0 selected)
▼	Archived Datasets	(1 selected)

ADD TO BASKET

1. Selected all required products?
2. Select Add to Basket button.



3. Your basket will appear on screen.
4. Move on to Basket Options.

Basket options

Product options vary depending on the product, but may include a combination of the following:

- Version - the date the map data was published.
- Format – some products have more than one format available.
- Theme – if the product is available in more than cartographic style. For example, OS MasterMap has standard (full colour) or plan (line style).
- Layers – you may be able to select layers of map features, such as Buildings, Roads etc.
- Clip – this option controls how data is extracted for your selected area.



Selecting options

1. Select the drop-down arrow(s) to select options.
2. Remember that some data products will not have any options.

The Basket example we show here is for Ordnance Survey Download Data.

Basket ✕

Select the Version, Format, Theme and Layers using the drop down menus (▾) where available.

Product Name	Version	Format	Theme	Layers	Clip ?	
Topography	July 2018	DWG	Plan	Partial	<input checked="" type="checkbox"/>	
Building Heights (Beta)	October 2017	Select Format	N/A	N/A	Not Available	
Open Map Local Raster	April 2018	CSV	N/A	N/A	<input checked="" type="checkbox"/>	
OS Terrain 5 DTM	July 2018	KML	N/A	N/A	Not Available	
		File Geodatabase				
		DWG				

Delete a map product

Select the bin icon next to any product to remove it from your order.

Basket ✕

Select the Version, Format, Theme and Layers using the drop down menus (▾) where available.

Product Name	Version	Format	Theme	Layers	Clip ?	
Topography	July 2018	DWG	Plan	Partial	<input checked="" type="checkbox"/>	
Building Heights (Beta)	October 2017	Select Format	N/A	N/A	Not Available	
Open Map Local Raster	April 2018	CSV	N/A	N/A	<input checked="" type="checkbox"/>	
OS Terrain 5 DTM	July 2018	KML	N/A	N/A	Not Available	
		File Geodatabase				
		DWG				



ADD MORE DATA

1. Select the Add more data button.
2. Make your data selections.
3. Select Add to Basket.

Your download notifications will be sent to:

PLACE YOUR ORDER

1. Name your order (optional).
2. Check the email address is correct.
3. Select Request Download.
4. You will receive an email confirming your order.

Give this download a name: [Optional]
hull site

Group my order in to a single download
 Send each dataset as soon as it is ready

Your download notifications will be sent to: [\[Change Email\]](#)



DOWNLOAD DATA

1. You will receive a second email with a download link when your data is ready for collection.
2. Select the Download your data button in the email.



Dear Denise Masek,

Order name: DM Test

The order (ref: 2308851) you placed for data from Digimap on 16 August 2023 at 17:09:27 has been processed and is ready for collection.

To collect your data please click on the button below or right-click on the button and copy and paste the link into your browser.

- If you **ARE** already logged in you will be taken directly to Data Download to download your data
- If you are **NOT** logged in, you will be asked to specify your organisation and will need to login before downloading your data

[Download your data](#)

Please read [what do I do with data](#) for information on getting the data into a GIS or CAD system.


Data will be available for collection for a maximum of 3 days from the date of this email. After 3 days it will be deleted. Once you have collected the data it will be deleted instantly from the server. You cannot collect the data twice - you will need to re-order the data if you require a replacement.

You can also click or copy/paste the following URL for the data into your browser:

<https://digimap.edina.ac.uk/roam/download/order/1fbbdaf83b0bb46f189ff1bed0fi>

Note: if you are not already logged in to Digimap you will be asked to specify your organisation and will need to login before downloading your data.

3. You will be prompted to login to Digimap if you are not already.
4. A window opens confirming your order name, date and download size.
5. Select the Download button.
6. Download the file to your device.

 **OS Data Download** ▼

Your download is ready.

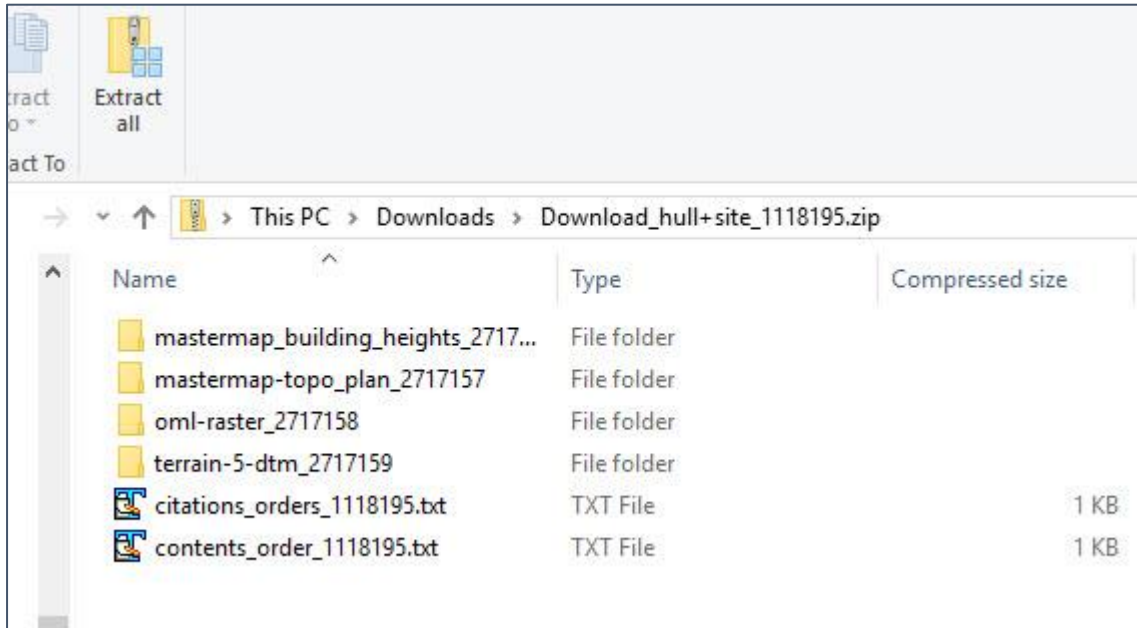
Order Name	Status	Order Date	Download Size
250k	READY	4/24/2019	2.72 MB

[Return to map](#) [Download](#)



Download File

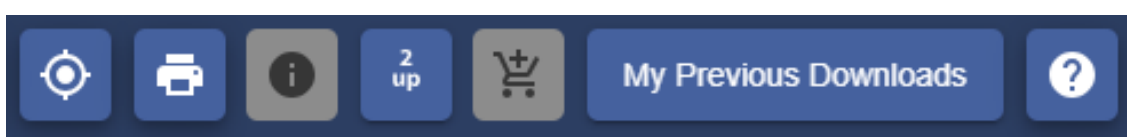
1. Your data is downloaded as a zip file.
2. Most devices will offer an Extract option, to extract the files from the zip. Depending on your software's requirement, you may not need to extract the files.
3. 2 text files are provided:
 - a. One file gives citations for your data products.
 - b. Another file details the contents of your order.
4. Each data product you ordered is within a sub-folder. The image below shows 4 data sub-folders.



5. Within a product sub-folder, you will typically find:
 - a. A folder or folders containing the data files.
 - b. A licence document, explaining the terms of use for that product.
 - c. Any supporting documents with information on using the product including style files.

REORDER DATA

1. Login to Digimap.
2. Select your collection.
3. Select Download Data.
4. Select My Previous Downloads, on the top toolbar.





5. Select any order you wish to reorder from the list.



6. The details of the order will appear under the first list.

Download Details

<input type="checkbox"/>	Product Name	Status	Version	Format	Theme	Layers	Clip 
<input type="checkbox"/>	Boundary-Line	Complete	May 2023	SHAPE 	N/A	Select	Not Available
<input type="checkbox"/>	1:50 000 Scale Gazetteer	Complete	May 2016	CSV	N/A	N/A	Not Available
<input type="checkbox"/>	Open Map Local Raster	Complete	April 2023	TIFF	N/A	N/A	<input type="checkbox"/>

* - Option selected in your original download.

7. Select the product(s) you wish to reorder.
8. Amend any options.
9. Rename your order (optional).
10. Select Reorder.

