



Boundary-Line™

User guide and technical specification

Boundary-Line

User guide

Contents

Section	Page no
Preface	4
Contact details	4
Use of the product	4
Purpose and disclaimer	4
Copyright in this guide	4
Data copyright and other intellectual property rights	5
Trademarks	5
Back-up provision of the product	5
Using this guide	5
Chapter 1	6
An introduction to Boundary-Line	6
Boundary-Line benefits	6
Boundary-Line applications	6
Requirements to utilise Boundary-Line	7
Hardware	7
Software	7
Transfer formats	7
Media	7
Update	7
Chapter 2	8
Overview of Boundary-Line	8
Data overview	8
Basic principles	8
Boundary-Line data source	8
Boundary-Line features	8
Boundary-Line files and sub-levels	9
Complex polygons	10
Feature information	10
Feature position	11
Feature attribute data	11
Area codes	11
Other attributes	11
Unique identifiers for administrative unit, link and polygon	11
Text	12
Chapter 3	13
Boundary-Line explained	13
Relationships of administrative areas	13
Boundary-Line principles and features	17
Administrative area	17
Area values	17
Boundary	18
Ceremonial counties	18
Detached parts	18
Divorcement	18
Effective date	18
Exception areas	18
Government Office Regions (GORs)	20
Honorary titles	20
National boundaries	20
Census agency codes	20
Operative dates	21
Order, Act or Statutory Instrument	21
Superseded date	22
Survey change	22
Un-annexed areas	22
Unitary authorities	22
The coastline and associated items	22

	Extent of the realm (EOR)	22
	Foreshore.....	23
	Islands and rocks in the sea	23
	Mean high water (springs)	24
	Mean low water (springs).....	24
	Normal tidal limit (NTL)	24
	Pier.....	24
	Point B	24
	Seaward extensions.....	24
	Structures in the sea	25
Annexe A	Change update: Statutory Instruments (SI) and non-SI changes in May 2008 –	
	Boundary-Line release	26
	England	26
	Wales	28
	Scotland	28
	Changes not incorporated into the May 2008 Boundary-Line update	29
	Residual Statutory Instruments (SIs) and non-SIs	29
Annexe B	Boundaries that relate to Government Office Regions (GORs)	30
Annexe C	Statistical classifications aligned to Boundary-Line	33

v1.2 – 05/2008

D05300_02

Preface

This user guide (hereafter referred to as the guide) is designed to provide an overview of Boundary Line™ (hereafter referred to as the product) and it gives guidelines and advice on how a customer might derive the maximum benefit from the product. It assumes a general knowledge of geographic information. If you find an error or omission in this guide, or otherwise wish to make a comment or suggestion as to how we can improve the guide, please contact us at the address shown below under contact details or complete the product and service performance report form at [annexe C](#) and return it to us.

Contact details

Our Customer Service Centre will be pleased to deal with your enquiries:

Customer Service Centre
Ordnance Survey
Romsey Road
SOUTHAMPTON
SO16 4GU

General enquiries (calls charged at local rate): 08456 05 05 05

Dedicated Welsh Language HelpLine: 08456 05 05 04

Textphone (deaf and hard of hearing users only please): +44 (0) 23 8079 2906

Email: customerservices@ordnancesurvey.co.uk

or visit the Ordnance Survey website at: www.ordnancesurvey.co.uk

Use of the product

The terms and conditions upon which the product, including this guide, is made available to you and your organisation are contained in the customer contract made between you and Ordnance Survey. If there is an inconsistency between the terms of your customer contract and this guide, then the terms of your customer contract prevail. If you or your organisation has not signed a valid current customer contract then you are not entitled to use the product.

Purpose and disclaimer

This guide is provided for guidance only and does not constitute any warranty, representation, undertaking, commitment or obligation (express or implied) about the product or its suitability for any particular or intended purpose. Any warranties, representations, undertakings, commitments and obligations given by Ordnance Survey about the product and/or its suitability for any particular or intended purpose are set out in your customer contract. It is your responsibility to ensure that this product is suitable for your intended purpose.

Ordnance Survey does not accept any liability (whether for breach of contract, negligence or otherwise) for any loss or liability you or any third party may suffer in relying on this guide and any guidance, suggestion, advice or explanation provided in it. Any liability that Ordnance Survey has to you in relation to the product, its supply, use, accuracy, data supplied, functionality or any other liability arising out of or in connection with the product is limited as set out in your customer contract.

We may change the information in this guide at any time without notice.

We do not accept responsibility for the content of any third party websites referenced or accessed in or through this guide, any contractual documentation, and/or the Ordnance Survey website.

Copyright in this guide

This guide (including for the avoidance of doubt any mapping images reproduced herein), is © Crown copyright 2008. All rights reserved.

Any part of this guide may be copied for use internally in your organisation or business so that you can use the product for the purpose for which it is licensed to your organisation or business (but not otherwise).

No part of this guide may be reproduced or transmitted in any form or by any means (including electronically) for commercial exploitation without the prior written consent of Ordnance Survey.

No part of this guide may be copied or incorporated in products, services or publications that you generate for onward sale, or as free promotional or support materials, without the prior written consent of Ordnance Survey.

Data copyright and other intellectual property rights

The Crown (or, where applicable, Ordnance Survey's suppliers) owns the intellectual property rights in Ordnance Survey digital map data.

Full details of the terms and conditions under which Ordnance Survey digital map data may be processed and/or manipulated or copied by a customer – whether or not for use on PCs or workstations or for making hard copies – are available from the Customer Service Centre, please see [contact details](#). You should check the terms and conditions with us before using the data. It is also the responsibility of the holder of the digital map data to ensure that any plotted or printed output contains the required copyright and database acknowledgements in a conspicuous position.

Trademarks

Ordnance Survey, the OS Symbol, Land-Line, Landplan and OSGB36 are registered trademarks and Boundary-Line is a trademark of Ordnance Survey, the national mapping agency of Great Britain.

Adobe and Acrobat Reader are registered trademarks of Adobe Systems Incorporated.

ESRI is a registered trademark of Environmental Systems Research Institute, Inc.

MapInfo is a registered trademark of MapInfo Corporation.

Back-up provision of the product

You are advised to copy the supplied data to a back-up medium.

Using this guide

The documentation is supplied in portable document format (PDF) only. Free Adobe® Acrobat Reader® software, which displays the guide, incorporates search and zoom facilities and allows you to navigate within. Hyperlinks are used to navigate between associated parts of the guide and to relevant Internet resources by clicking on the blue hyperlinks and the table of contents.

If you are unfamiliar with any words or terms used and require clarification please refer to the [glossary](#) at the end of the document.

Chapter 1 An introduction to Boundary-Line

This user guide is an introduction to Boundary-Line which offers guidance and advice on how to deliver the maximum value from the product. The technical specification provides specific details of the structure, content and formats of Boundary-Line for customers using the data in a geographical information system (GIS) or other systems. The technical specification should be used in conjunction with the user guide.

Boundary-Line provides administrative and electoral boundaries and their names for England, Scotland and Wales. Boundary-Line represents the hierarchy of boundaries in Great Britain.

Boundary-Line for England and Wales was initially digitised from Ordnance Survey's boundary record sheets at 1:10 000 scale (or, in some cases, at 1:10 560 scale).

The 1:10 000 scale published mapping has been progressively withdrawn as it is replaced by Landplan®. Boundary-Line now uses this as the source document, occasionally mapped against large scale source.

The census agency codes are supplied by Office of National Statistics (ONS) and General Registers of Scotland (GROS).

Appropriate software is needed to use the data for your intended application.

Update notes, detailing previous release changes, accompany each product release contained within the .doc file on the CD and the Change Update document.

Subject to payment of the annual licence fee, you will be provided with a replacement dataset for all Boundary-Line files, supplied in accordance with your licensing agreement.

Boundary-Line benefits

The high specification of Boundary-Line offers you a number of benefits:

- Full coverage of Great Britain, supplied as England, Scotland and Wales
- The key boundary dataset for Great Britain suited to multiple applications using a geographical information system (GIS) and other digital mapping systems.
- The full hierarchy of boundaries.
- Structured vector format, offering great functionality.
- [census agency codes](#) (where available) allow you to link Boundary-Line polygons with census statistics.
- Area values for every polygon.
- Mean high water (springs) mark enables you to build and explicitly identify dry land areas within coastal polygons.
- Documented annual updates allow you to easily identify relevant changes.
- Unique administrative area identifiers are retained at each update, allowing revised boundaries to be related to your existing data.

Boundary-Line applications

Boundary-Line provides a detailed and comprehensive dataset of coverage in Great Britain of administrative and voting boundaries that is designed to support a wide range of GIS and desktop mapping applications, such as:

- political analysis;
- environmental analysis;
- statistical analysis for social or marketing decision making;
- geodemographic analysis;
- asset management;
- planning applications;
- legal work;
- reference and research; or
- customised graphic output.

Requirements to utilise Boundary-Line

Hardware

Provided that sufficient memory, storage facilities and a suitable software viewer application (see below) are available, there are no constraints on the hardware platforms that can be used. The range of hardware that can typically be used varies from higher specification personal computers (PCs) to mainframe computers.

Software

Boundary-Line is inert data and does not include software for data manipulation. To fully exploit Boundary-Line it is necessary to use appropriate application software. There are many proprietary systems available and Ordnance Survey publishes a list of GIS, computer-aided design (CAD) and digital mapping system suppliers who have independently confirmed their software can import Ordnance Survey NTF format data.

Transfer formats

Boundary-Line is created in:

- BS 7567 (NTF v2.0 Level 3)
- ESRI® Shapefile
- MapInfo® MID/MIF

Media

Boundary-Line is supplied on CD-ROM.

Update

Boundary-Line is now updated twice a year, spring and autumn, allowing a choice in which update is preferred

The spring update represents boundaries (as defined and modified by Orders, Acts and Statutory Instruments) at the date of the May local elections.

The autumn update also represents boundaries at the date of the May local elections and is operative from the previous spring/May to autumn/October release.

Unlike changes to other boundaries, changes to Westminster Constituency (Parliamentary) Boundaries do not come into operation on a defined date (see [Effective Date](#) and [Operative Dates](#)) and it is therefore difficult to timetable such changes into the spring or autumn update. Therefore any forthcoming Westminster Constituency (Parliamentary) boundary changes which have been approved by Government will be supplied as a separate file (in MapInfo or ESRI formats only) as part of the updates.

Each update is accompanied by details of all changes.

Chapter 2 Overview of Boundary-Line

Data overview

Basic principles

Boundary-Line is the key dataset of administrative and voting boundaries in Great Britain. It is a representation in computer-readable form of a specialist large-scale map, including real-world objects, which may be tangible (such as the [mean high water](#) mark) or intangible (such as a district boundary).

GIS software provides the functionality to store, manage and manipulate this digital map data. The properties of the data make it suitable as a key base for users wishing to develop applications. Boundary-Line is also suitable for use within other digital mapping systems. Boundary-Line is coordinated on the National Grid, which allows for the easy superimposition of other datasets.

Links represent all linear features; that is boundaries, [extent of the realm](#) (EOR), and mean high water (springs) mark (MHW). They are strings of coordinated line segments and have relationships to polygon features in order to convey descriptive characteristics of the link. Links in Boundary-Line may comprise up to several thousand line segments. A chain is the closed loop of links bounding a polygon.

Nodes are the representation of the points at the start and end of a link. At least one node occurs on the perimeter of a polygon where the bounding link completes the enclosure of the area. There may be many nodes connecting the bounding links of a polygon. Nodes are implicit in Boundary-Line.

Polygons are continuous areas defined by sets of bounding closed lines. They are representational of areas, such as electoral wards, and have relationships to administration collection features in order to convey descriptive characteristics of the polygon. These are explicit within the data and can be viewed and manipulated with appropriate software

Each link feature has associated geometry; this will be two or more coordinate pairs.

Boundary-Line data source

Boundary-Line is currently updated by mapping against Landplan (1:10 000 scale) and in certain cases large scale sources.

Boundary-Line features

A list of the features within Boundary-Line includes:

- Civil Parish (England) and Community (Wales);
- County;
- District;
- Metropolitan District;
- Electoral Division (County and Unitary);
- European Electoral Region;
- Greater London Authority;
- London Borough (including the County of the City of London);
- Greater London Authority Assembly Constituencies (the London Proportional Representation voting areas);
- Metropolitan District;
- Westminster (Parliamentary) Constituency;
- Scottish Parliamentary Constituency and Electoral Region;
- Unitary Authority;
- Ward (District, Unitary, Metropolitan and London Borough);
- Welsh Assembly Constituency and Electoral Region;
- [extent of the realm](#) (EOR) – either [mean low water](#) mark (England and Wales), [mean low water springs mark](#) (Scotland) or seaward boundary extensions;

- [mean high water mark](#) (England and Wales) and/or [mean high water springs mark](#) (Scotland) (both are abbreviated to MHW in this user guide);
- distinctive names;
- [census agency codes](#) in England, Wales and Scotland for counties, unitary authorities, districts, wards and electoral divisions;
- area measurements;
- unique administrative unit, link and polygon identifiers; and
- annual updates of the dataset.

Boundary-Line files and sub-levels

The data is supplied as named files. The named files include all of the other relevant sub-levels of electoral boundaries that belong under that high level administration; these are:

Named file type	Possible sub-level of boundaries within the named file.
County	The named County, District, District Ward, Civil Parish, County Electoral Division (ED).
Unitary Authority	The named Unitary Authority, Unitary Authority Ward or Unitary Authority ED as appropriate, Civil Parish where appropriate, together with Community in Wales.
Metropolitan District	The named Metropolitan District, Metropolitan District Ward, Civil Parish where appropriate.
Greater London Authority	The Greater London Authority, Greater London Authority Assembly Constituency, London Borough, London Borough Ward.
Scottish Parliamentary Electoral Region	The named Scottish Parliamentary Electoral Region, Scottish Parliamentary Constituency.
Welsh Assembly Electoral Region	The named Welsh Assembly Electoral Region, Welsh Assembly Constituency.
Westminster Constituency	The named Westminster Constituency.
European Region	The named European Region.

The following table represent the named files contained in Boundary-Line NTF May 2008 specification:

- A complete dataset of Great Britain has 824 named files made up of:
 - 35 County files;
 - 100 Unitary Authority files;
 - 628 Westminster Constituency files;
 - 11 European Region Files;
 - 36 Metropolitan District files;
 - 1 Greater London Authority file;
 - 8 Scottish Parliamentary Electoral Region files; and
 - 5 Welsh Assembly Electoral Region files.
- The dataset for England has 656 named files made up of:
 - 35 County files;
 - 46 Unitary files;
 - 529 Westminster Constituency files;
 - 9 European Region files;
 - 36 Metropolitan District files; and
 - 1 Greater London Authority file.

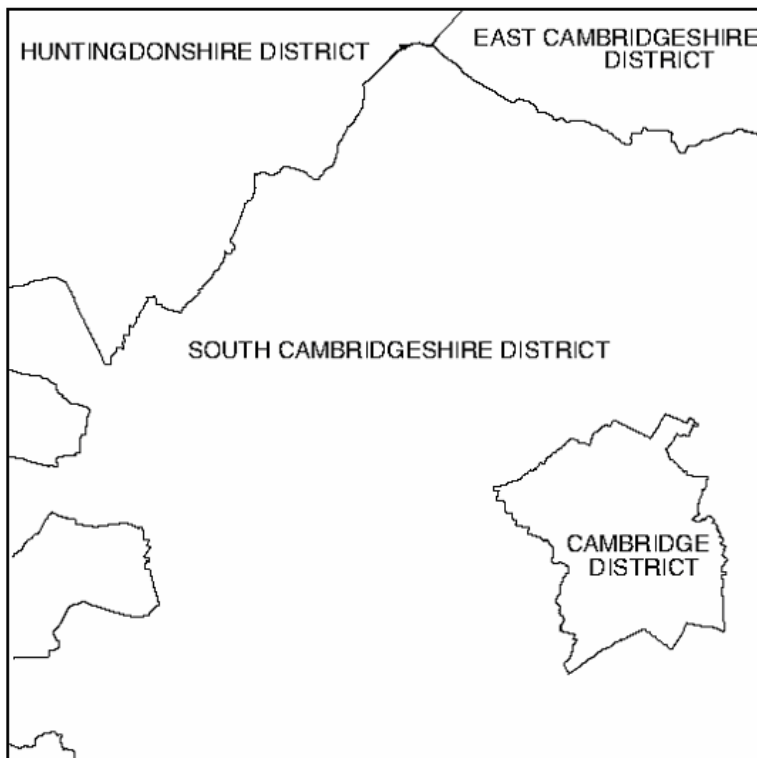
- The dataset for Wales has 68 named files made up of:
 - 22 Unitary Authority files;
 - 40 Westminster Constituency files
 - 1 European Region File; and
 - 5 Welsh Assembly Electoral Region files (these include the Welsh Parliamentary files).
- The dataset for Scotland has 100 named files made up of:
 - 32 Unitary Authority files;
 - 59 Westminster Constituency files;
 - 1 European Region file; and
 - 8 Scottish Parliamentary Electoral Region files (these include the Scottish Parliamentary files).

As a consequence of the named file supply, all coordinates in the supplied data file are full Ordnance Survey National Grid coordinates, as there is no concept of local origin.

Complex polygons

Complex polygons are polygons that wholly enclose other polygons. They only occur when an administrative unit wholly encloses one or more others at the same level, for example, a rural district surrounding an urban district.

Figure 2.1: A complex polygon – Cambridge District surrounded by South Cambridgeshire District



Feature information

Boundary-Line has three feature classes:

- administrative units with attributes;
- polygon features with attributes; and
- linear features – links with attributes and geometry.

The position and shape of real-world features are represented in Boundary-Line data as geometric structures of links. They are arranged into recognisable categories. Full listings of individual features are listed in chapter 2 of the technical specification, [Specific Boundary-Line NTF Information](#).

Each feature has the following component:

- feature attribute data.

Each geometric feature has an additional component:

- feature position.

Each link has a geometric and attribute component. The geometric component defines the positional characteristic of the feature, and explicit relationships exist between administrative units and polygons and the links and polygons. The attribute component defines the descriptive characteristics of the feature, together with the classification.

Feature position

The geometry of map features is defined in terms of coordinates. All coordinates used in Boundary-Line are based on the Ordnance Survey National Grid (NG) coordinate referencing system and are quoted to a 0.1 m resolution. Despite this, Boundary-Line data can be no more accurate than its source, primarily the generalised 1:10 000 scale mapping. There will be positional differences between the boundaries in Boundary-Line and Ordnance Survey large-scale topographic products. This is due to the large-scale products being surveyed to a higher degree of accuracy and associated to ground surface features, at scales such as 1:1250 and 1:2500.

Boundary-Line has been created as a more generalised set of administrative and electoral boundaries for the whole of Great Britain. It has been digitised against Ordnance Survey (generalised) 1:10 000 Landplan mapping. The process of generalising for 1:10 000 scale mapping may have caused certain features to be moved from their true ground position for the purposes of map clarity. The result being Boundary-Line and large-scale boundaries will not always be coincident.

Feature attribute data

An attribute is the descriptive characteristic of a feature, that is, a non-spatial element. In Ordnance Survey map data terms, an attribute can be a feature type (these are character codes), or a distinctive name, number or code, for example, Bassett ward or 145.232 hectares.

Attribute codes relevant to NTF are fully described in [chapter 4 of the technical specification](#).

Area codes

Each administrative unit is classified by means of an area code (AC). These area codes are allocated when each feature is initially interpreted and captured from source. This means that a county is distinguished from a ward by the area code allocated to it. The polygon features can be classified by tracing their relationships to administrative units. Consequently links can be classified by tracing their relationships to polygons. These area codes are all listed in [chapter 2 of the technical specification](#).

Other attributes

It is possible, with appropriate software, for you to add other names or values of your own choice as attributes of features.

Unique identifiers for administrative unit, link and polygon

There are three identifiers in Boundary-Line that help you identify features and which are provided to create consistent references between successive releases of Boundary-Line data. They are unique within each feature type throughout the whole dataset and maintained through successive annual updates. See chapter 2 in the technical specification for [Other attributes and ID information](#). These identifiers are never modified – only created or deleted. If a feature is deleted from the Boundary-Line database, then the identifier ceases to exist.

[ADMIN_AREA_ID \(AI\)](#)

[GLOBAL_LINK_ID \(LK\)](#)

[GLOBAL_POLYGON_ID \(PI\)](#)

Text

There is no direct cartographic text in Boundary-Line. Names, area values and census agency codes are held as attributes.

Chapter 3 Boundary-Line explained

Relationships of administrative areas

The Boundary-Line product supplies the administrative area relationships explicitly within the [COLLECT] record.

A District is a division of a County; a Civil Parish is a division of a District. A County is divided for voting purposes into Electoral Divisions (EDs) and a District is divided for voting purposes into District Wards.

With the introduction of Unitary Authorities, there are now two- and three-tier local government hierarchies. The three-tier system remains unchanged; the two-tier system has Unitary Authorities replacing the County and District levels of administration.

Unitary Authorities may be divided into Civil Parishes or Communities (except in Scotland); and Unitary Authority Wards or Unitary Authority EDs for voting purposes. In Wales the voting area is the Unitary Authority ED; in Scotland it is the Unitary Authority Ward, and in England it is the Unitary Authority Ward (except in the Isle of Wight, where it is the Unitary Authority ED).

England also has Metropolitan Districts; these have no County administration. These Districts are divided for voting purposes into Metropolitan District Wards.

With the introduction of the regional government for London, in this document called the Greater London Authority; the proportional representation voting area for this new administration is the Greater London Authority Assembly Constituency. The existing London Borough structure also has a relationship with the new Greater London Authority and each London Borough is divided for voting purposes into London Borough Wards.

Scotland is divided into Parliamentary Constituencies for voting purposes; to elect Members of the Scottish Parliament (MSPs). The Scottish Parliamentary Electoral Region is a grouping of Scottish Parliamentary Constituencies.

Wales is divided into Assembly Constituencies for voting purposes; to elect Assembly Members (AMs) to the Welsh Assembly. The Welsh Assembly Electoral Region is a grouping of Welsh Assembly Constituencies.

Great Britain is divided into European Regions (Scotland, Wales and nine English regions) for voting purposes to elect members (MEPs) to the European Parliament.

England, Scotland and Wales are divided into Parliamentary Constituencies for voting purposes to elect members (MPs) to the Westminster Parliament. Parliamentary Constituencies are made up of combinations of Wards (or Electoral Divisions in Wales).

Boundary-Line data is output in two structures:

- **Nested**

The data is supplied by named files, all the named files include all of the other sub-levels of electoral boundaries that belong under that high level administration (for example, County file) will have the named county, district, district ward, civil parish, county ED contained within. Unitary authorities will have named unitary authority, unitary authority ward or unitary authority ED as appropriate, civil parish where appropriate, together with community in Wales. The nested structure is available in NTF, ESRI Shapefile and MapInfo MID/MIF.

- **Layered**

This is a simplified file structure supplying the boundaries as individual files, for example, County file contains only counties, and unitary authorities file contains just unitary authorities. The layered structure is only available in ESRI Shapefile and MapInfo MID/MIF.

Figure 3.1a: Relationships of administrative areas for England (nested)

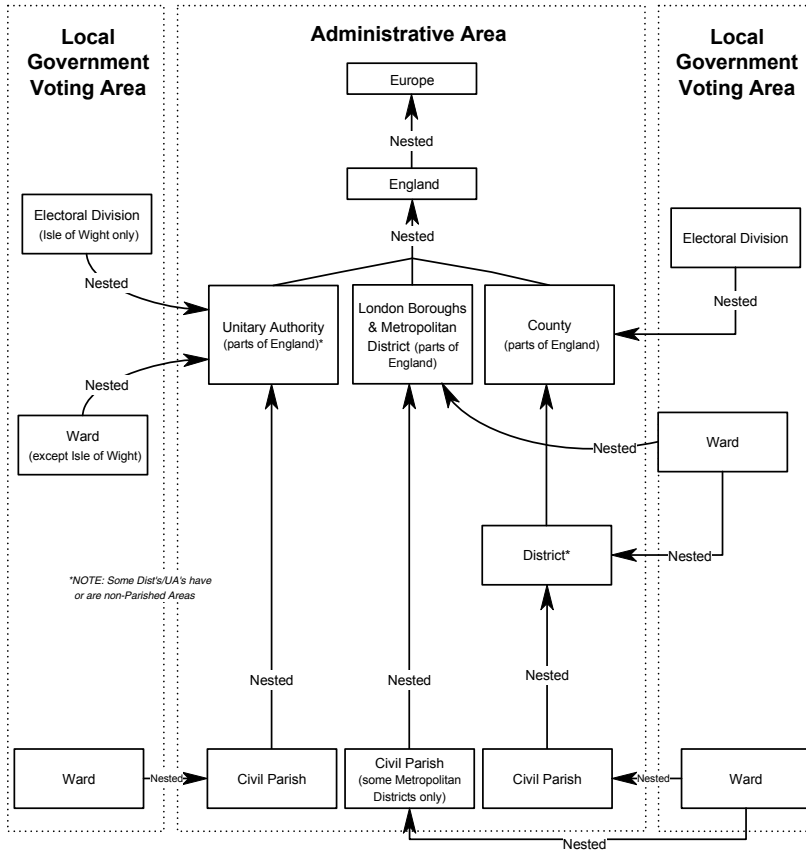


Figure 3.1b: Relationships of administrative areas for Wales (nested)

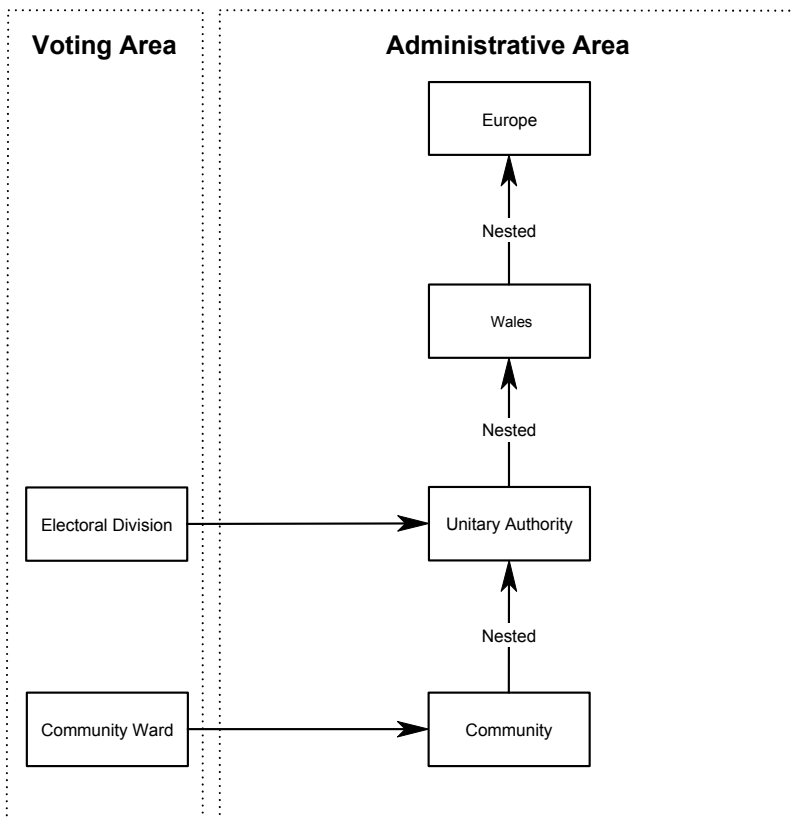


Figure 3.1c: Relationships of administrative areas for Scotland (nested)

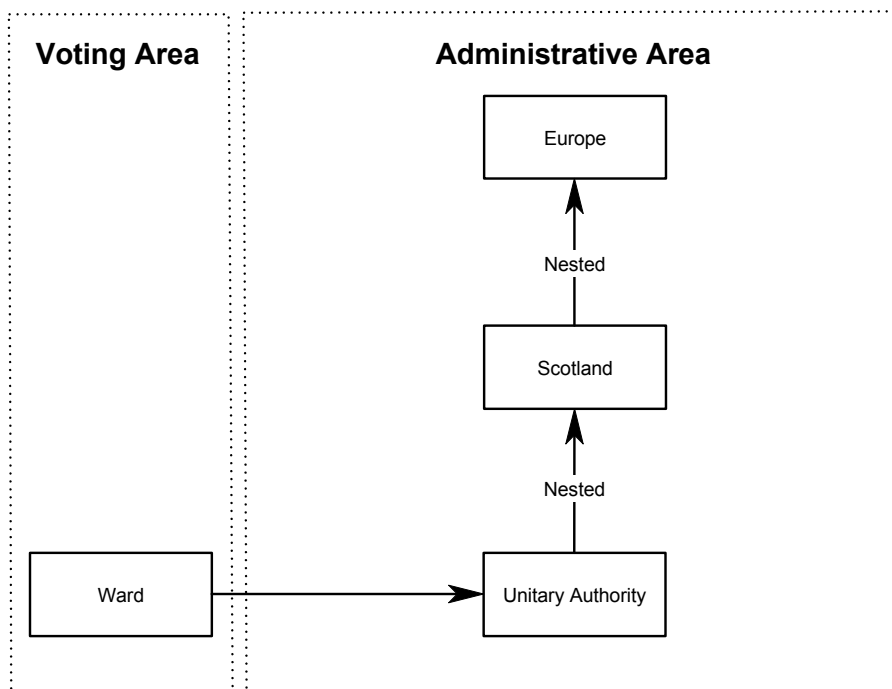


Figure 3.2a: An example of the English directory and layered files (MID/MIF)

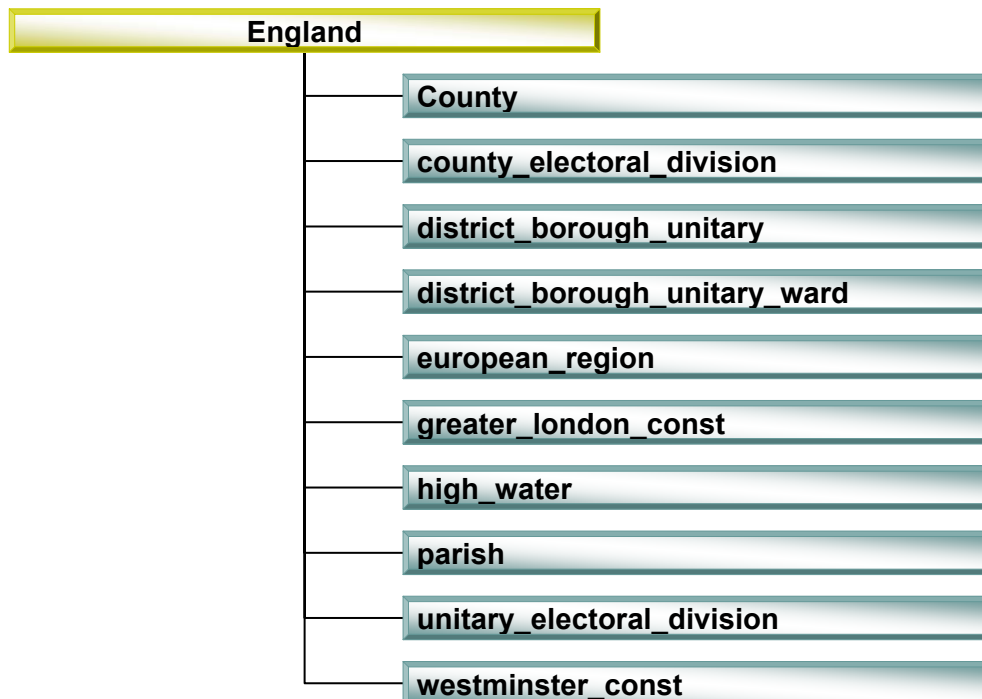
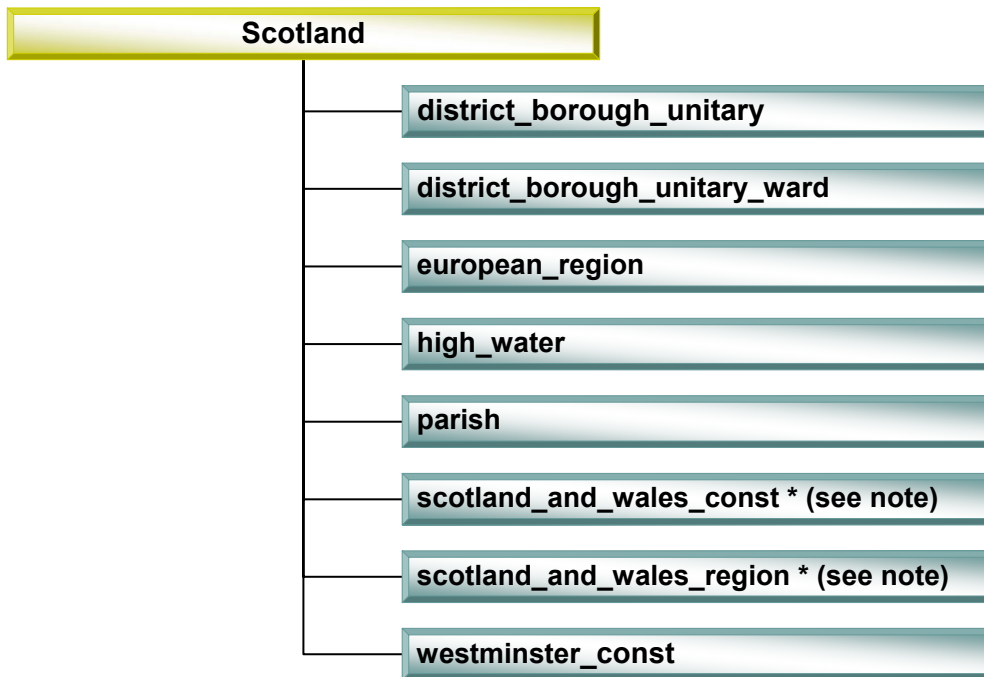
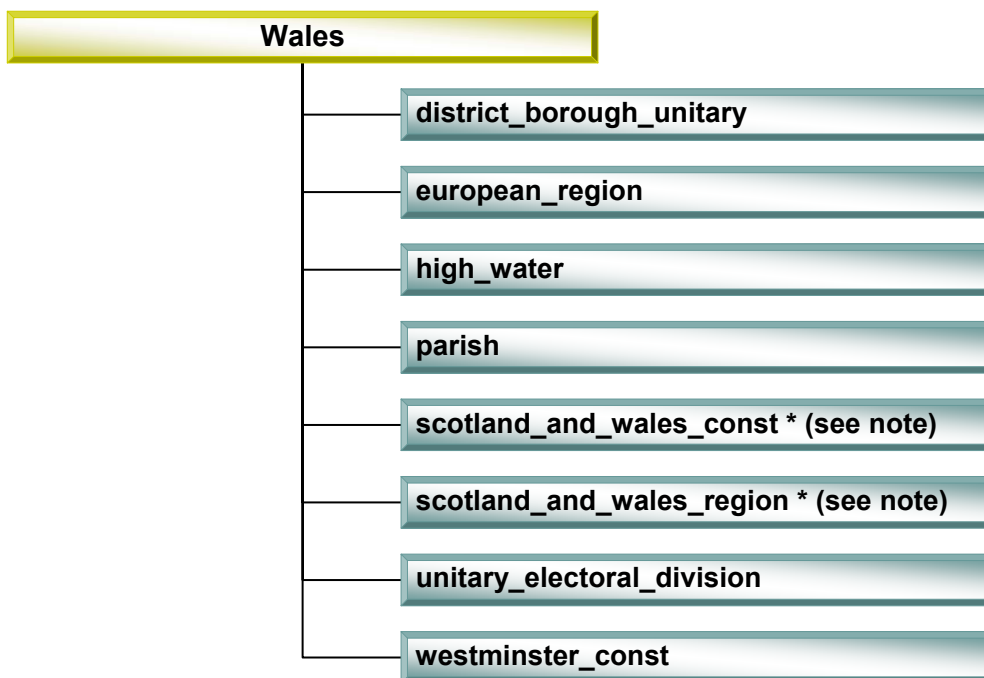


Figure 3.2b: An example of the Scottish directory and layered files (MID/MIF)



*NOTE: *Scotland_and_Wales files contain only Scottish information in the Scotland **data** folder and only Welsh information in the Wales **data** folder.*

Figure 3.2c: An example of the Welsh directory and layered files (MID/MIF)



*NOTE: *Scotland_and_Wales files contain only Scottish information in the Scotland **data** folder and only Welsh information in the Wales **data** folder.*

Boundary-Line principles and features

This following explains the representation of features in Boundary-Line and describes various definitions and exceptions.

Administrative area

A term used by Ordnance Survey to refer to all public administrative areas. For the Boundary-Line dataset the following are included under this term:

- In England:
 - County;
 - Unitary Authority;
 - Metropolitan District;
 - District;
 - Civil Parish (*NOTE: depicted if appropriate notification has been received. Not all parishes have councils*);
 - [Isles of Scilly](#);
 - European Electoral Region;
 - Parliamentary (Westminster) Constituency;
 - Electoral Division (of County or Unitary Authority);
 - Ward (of District, Metropolitan District, London Borough, Unitary Authority);
 - London Borough (including the County of the City of London);
 - Greater London Authority; and
 - Greater London Authority Assembly Constituency.
- In Wales:
 - Unitary Authority;
 - Community (*NOTE: depicted if appropriate notification has been received*);
 - European Electoral Region;
 - Parliamentary (Westminster) Constituency;
 - Electoral Division (of Unitary Authority);
 - Welsh Assembly Constituency; and
 - Welsh Assembly Electoral Region.
- In Scotland:
 - Unitary Authority;
 - European Electoral Region;
 - Parliamentary (Westminster) Constituency;
 - Ward (of Unitary Authority);
 - Scottish Parliamentary Constituency; and
 - Scottish Parliament Electoral Region.

Area values

Area values exist for every polygon in Boundary-Line, area values are quoted to the current Department for Communities and Local Government (DCLG) specification of 0.001 hectare. The value is subject to the inherited accuracies of the generalised 1:10 000 scale published mapping used as the source for Boundary-Line.

Boundary

A boundary is the limit of a preset and established area whose limit is determined by one or more lines. For example in Boundary-Line an administrative unit boundary, is represented by a county area boundary.

Ceremonial counties

A ceremonial county is an area that has an appointed Lord Lieutenant and High Sheriff.

Ceremonial counties are not explicitly represented in Boundary-Line.

Detached parts

The description Detached, (Det), only applies to portions of local government or parliamentary constituency areas which are separated from the main area, being completely surrounded by other local government or parliamentary constituency areas and not connected by direct access on the ground.

The description will not be applied to islands or parts of islands in the sea.

Detached parts have the same **AI attribute** (and **census agency code** where applicable) as the main area. Where there is more than one detached part they are numbered consecutively within the name, for example, MILTON CP (Det No 1).

Divorcement

Part of a boundary separated from another, originally on the same alignment. Divorcements are created by the revision of one boundary and not the other.

Figure 3.3: Divorced boundaries

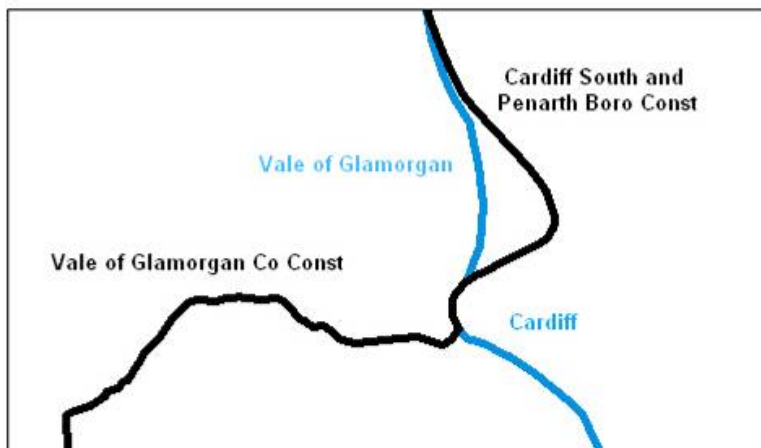


Figure 3.3 shows a boundary divorce. The unitary boundary between **Vale of Glamorgan** and **Cardiff** has been realigned, whilst the parliamentary (Westminster) constituency boundary has remained in its original position. It is likely that the parliamentary (Westminster) constituency boundary will also be realigned at some time in the future.

Effective date

These are the dates on which an Act, Order or Statutory Instruments are 'effective'. They may or may not be the same as the operative date or the appointed day or days. The term is particularly applied to Parliamentary (Westminster) Constituency changes which are effective at the date of the next General Election after the operation of the order making change. This is the 'effective' date, that is, the date of the proclamation dissolving an existing Parliament and calling a new Parliament.

Exception areas

The following are specific exceptions to the normal rules:

Greater London and the Metropolitan Counties

- Greater London covers the area of the 32 London Boroughs plus the City and County of the City of London.

- Greater London is no longer a County. The Greater London Authority, which has no authority over the autonomous London Boroughs, is held as one named file with all of the sub-levels of boundary within it.
- The London Boroughs and the City and County of the City of London have been classified as London Boroughs.

The Metropolitan Districts within the former Metropolitan Counties (disbanded in 1985) are classified as Metropolitan Districts:

- Greater Manchester;
- Merseyside;
- South Yorkshire;
- West Yorkshire;
- Tyne and Wear; and
- West Midlands.

The Inner and Middle Temples

The 'places' known as 'The Inner and Middle Temples' are within the City of London only for some purposes. They are not shown in Boundary-Line, but their areas have been wholly included within the City and its Wards for this dataset. There are two distinct areas with other areas held jointly, and the boundaries are so intermixed that they have never been published by Ordnance Survey separately. A record of these boundaries is, however, held in the Boundary Record Library for reference purposes.

Isles of Scilly

The Isles of Scilly are administered by a single-tier authority, the 'Council of The Isles of Scilly', and are not part of the County of Cornwall although linked with it for some purposes.

For the purposes of this dataset however it is classified as a County. There are no Districts, Electoral Divisions or Wards within this area. Isles of Scilly are slightly different to other areas in that the data is held in the County layer, and is named Isles of Scilly, below that there is only a parish layer instead of wards. They have an ONS Parish census code (a 7 figure alpha numeric that is 40OP006A7), on top of this they are also in Westminster and Euro files.

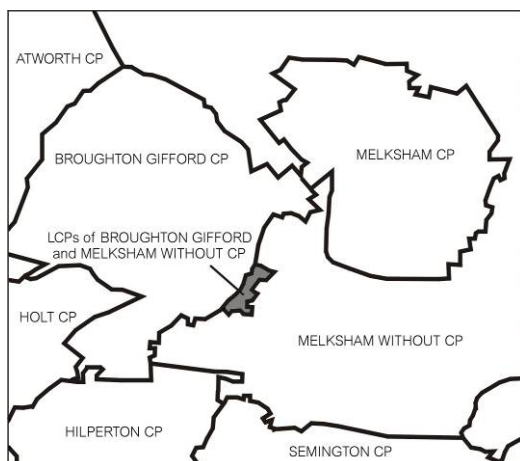
Parish/Community Wards

Divisions of parishes (England) and communities (Wales) not included in Boundary-Line.

Lands common to

These are areas where the limits of the parishes concerned have not been determined and the area itself is common to (or belongs to) two or more parishes. In Boundary-Line they are classified as separate parishes with the name LANDS COMMON TO THE PARISHES OF ___ applied (sometimes abbreviated to LCPs ___). These areas are allocated their own [AI attributes](#) and so on.

Figure 3.4: An example of Lands common to



River Dee

The boundary between Merseyside (the former county of) and the county of Cheshire and the Flintshire unitary authority area has not been determined and the line adopted in Boundary-Line is for the purposes of Ordnance Survey only, so that polygons can be created.

River Mersey

Certain sections of the boundary between Merseyside (the former county of); the county of Cheshire and the districts of Liverpool, Wirral, Ellesmere Port and Neston, Vale Royal and Halton have never been determined.

For the purposes of Boundary-Line, and by agreement with DCLG:

- 1 the district boundaries of those parts of Ellesmere Port and Neston, Vale Royal and Halton that abut the Mersey estuary have been made coincident with the limits of the relevant district's wards at the centre of the channel at high water (CCHW);
- 2 the undetermined part of the southern boundary of Liverpool district, in the Mersey estuary, has been made coincident with the limits of that district's wards at the centre of the channel at high water (CCHW);
- 3 the undetermined part of the county boundary between Merseyside (the former county of) and Cheshire in that part of the estuary between the districts of Ellesmere Port and Neston and Liverpool has been made coincident with the limits of the electoral divisions at the centre of the channel at high water (CCHW); and
- 4 the northern limit of the parliamentary constituency of Ellesmere Port and Neston is the mean high water mark on the south side of the Mersey estuary.

The wards of Windsor Castle

The Upper and Middle wards of Windsor Castle do not form part of the district of Windsor and Maidenhead but have been included for the purposes of this dataset.

Government Office Regions (GORs)

Government Office Regions are *not* represented as specific boundary features in Boundary-Line however the boundaries that are used to define the GORs are represented as European Regions. A full list of the Counties and Unitary Authorities that represent each European Region which the GORs are based on are listed at [annexe B](#). The official GOR information can be found at www.statistics.gov.uk/official. This will identify the GORs defined by Office for National Statistics which only covers England. We have also included Scotland and Wales to complement the product's GB coverage.

Honorary titles

Honorary titles granted to local government areas, such as city and town are not included in Boundary-Line.

Boroughs in England have been identified, as from the October 2006 release, with (B) in the file name and (B) in the Name attribute, for example;

CITY_OF_SOUTHAMPTON (B) = File name

CITY OF SOUTHAMPTON (B) = NAME attribute

The borough (B) will only be depicted on Unitary Authorities, District and Metropolitan Districts. A list of these boundaries and their borough status will be provided in the Doc Folder of the Boundary-Line product CD. This addition is to purely denote which boundaries have Borough status in England without creating polygons or altering the specification in any way.

National boundaries

The boundaries between England and Wales and England and Scotland are treated as county boundaries in Boundary-Line which have been created from the local authority boundaries.

Census agency codes

These [codes](#) are a unique system of referencing for administrative units.

The following types of unit are coded in Boundary-Line where they have been made available: counties, districts, metropolitan districts, London boroughs, unitary authorities, district wards, unitary authority wards and unitary authority EDs.

The codes are allocated by the Office of National Statistics (ONS) for England and Wales and by the General Register Office for Scotland (GROS) for Scottish areas.

NOTES: The codes for Scotland were included for the first time in the 1997 release of Boundary-Line. The [NTF OP](#) record has a maximum of seven characters for the census codes. In three-tier local government hierarchy areas, the format of the codes is a combination of two digits for county and two letters each for district and ward, in the form CCDDWW (see the following example codes) or CCDDPAR for Parish census agency code.

Example codes for typical wards in Cheshire

13UBGU (College ward)

13UHGY (Helsby ward)

13UDGH (Birchin ward).

The code for a county consists of the first two characters, followed by four spaces.

Example code for a county

13 (Cheshire)

The code for a district consists of the first four characters, followed by two spaces:

Example code for a typical district

13UB (13 = Cheshire county and UB = Chester district)

In two-tier local government hierarchy areas, the format of the codes is four letters, followed by two spaces, where the first two letters represent the unitary authority, and the second two, the ward.

Example code for a sample ward in a unitary authority

ETMA (ET = Halton and MA = Halton Brook ward)

The code for a unitary authority area consists of the first two characters, followed by four spaces.

Example code for a unitary authority

NJ (Sir y Fflint – Flintshire)

Any OP code is set at 999999 when the information is not available to Ordnance Survey.

The code is blank when the administrative unit does not have a code.

The Isles of Scilly have a unitary council but is considered as a district of the county of 'Cornwall and the Isles of Scilly' for ONS coding purposes.

Operative dates

This is a calendar date, given in an Order, Act or Statutory Instrument, on which the specified boundary changes will come into operation. Dates given may be up to four years after the publication of the Order, Act or Statutory Instrument and may apply to any type of boundary other than parliamentary or European regions

The [Westminster](#) (Parliamentary) [Constituency](#) boundaries have an [Effective date](#), rather than an Operative Date 'The Effective Date will be the date of a General Election, meaning any changes to these boundaries will apply as and from the date of the next election.'

Order, Act or Statutory Instrument

A document signed by the relevant Secretary of State or a local authority letter describing and giving legal authority for boundary changes. Other Acts and Orders can effect the addition of new boundary information, for example, seaward extensions and harbour acts.

Superseded date

This is the last date on which a boundary was current. Where an effective date applies, the superseded date will be the day before the next dissolution of Parliament, or the day before the next European Assembly election in the United Kingdom.

Boundaries are no longer shown in Boundary-Line if they have been superseded at the time of the annual snapshot of boundaries that each release of Boundary-Line represents.

Survey change

When changes occur to tide lines, rivers or streams caused by natural and gradual forces, any boundaries that are linked to these altered features will move with them. When the movement of a boundary, MHW or EOR alignment in Boundary-Line reflects such changes, this will be noted in the Update notes that accompany each release of Boundary-Line.

Un-annexed areas

This is an area within the realm which is not included in all the relevant administrative units. The area will remain un-annexed until further legislation changes its situation and the polygon represents a hole in that level of administration.

Unitary authorities

Unitary authorities and counties effectively create a contiguous layer of administrative units throughout the whole of Great Britain. They represent single-tier administrations with responsibility for all areas of local government.

The coastline and associated items

Extent of the realm (EOR)

The external bounding line of the Boundary-Line dataset is the [extent of the realm](#). This means the boundary extent is digitised on the alignment of the mean low water (springs)(MLWS) for the seaward extent. Boundary-Line does not contain a separate mean low water (springs) (MLWS) only FC0071 representing the mean high water (MHW).

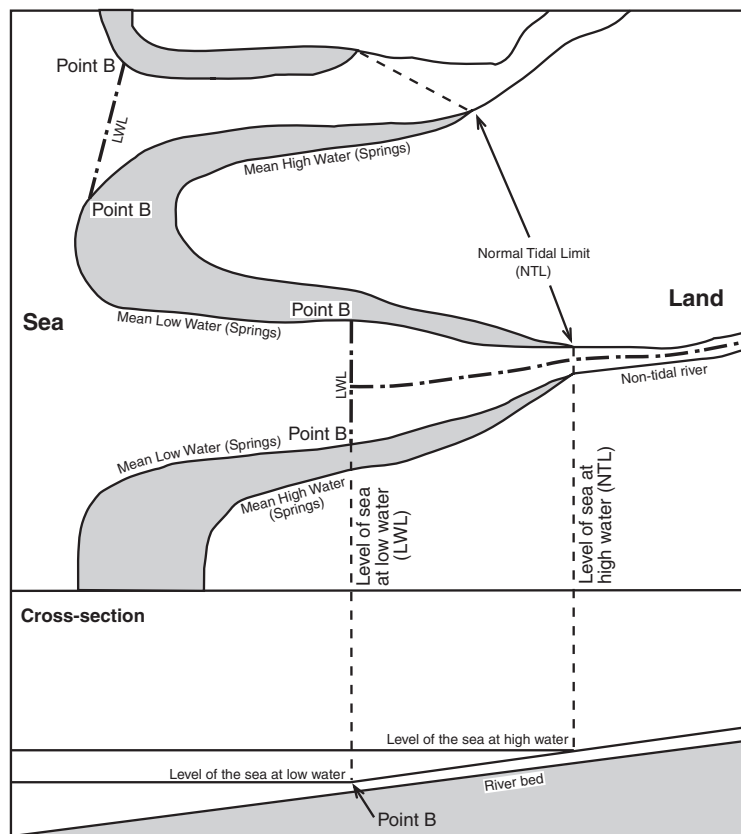
NOTE: To display the EOR both mean high water (MHW) and another type of boundary, for example, European electoral region or Westminster constituency, need to be displayed together.

The *Territorial Waters Jurisdiction Act 1878* and the *Territorial Waters Order in Council 1964* confirm that the extent of the realm of Great Britain as used by Ordnance Survey is properly shown to the limit of mean low water for the time being, except where extended by Parliament.

This means that the extent of realm will be:

- the [mean low water mark](#) ([mean low water springs](#) in Scotland) except when landward of a [seaward extension](#) or as shown below in Figure 3.5a and indicated as [Point B](#);
- the [mean high water mark](#) ([mean high water springs](#) in Scotland), where coincident with mean low water or mean low water springs, but not when landward of a seaward extension or Point B;
- Point B; and
- seaward extensions.

Figure 3.5a: Treatment of boundaries in estuaries



In this figure, the extent of the realm (EOR) follows mean low water, crossing the estuaries at LWL.

Foreshore

The foreshore is taken to be the area of land between **mean high water (springs)** mark and the **extent of the realm** which will include:

- tidal water within a **seaward extension**; and
- tidal water above **Point B** (Figure 3.5a), to the **normal tidal limit (NTL)**, together with the area between mean high water (springs) mark and the edge of the channel at **mean low water (springs)**.

Mean high water (springs) mark is represented in Boundary-Line by a continuous link feature with feature code 0071. Mean low water (springs) mark is not shown, although it is generally coincident with the EOR.

The area of non-inland is referenced within each administrative unit using the NA attribute.

Islands and rocks in the sea

The following rules govern the representation in Boundary-Line of offshore islands and rocks in the sea:

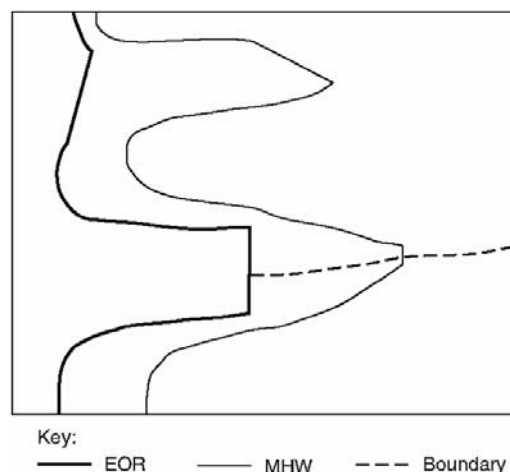
- offshore rocks and islands will be shown if 0.4 hectares or more in area at high tide;
- offshore islands with buildings will always be shown, irrespective of size;

Offshore islands or rocks will not be shown if they are:

- beyond the defined extent of the realm, irrespective of size; or
- covered at high tide.

If an offshore island or rock is shown, it will be contained within all the relevant administrative unit collections.

Figure 3.5b: Treatment of estuaries in Boundary-Line



This figure shows how the features depicted in figure 3.5a are represented in Boundary-Line.

Mean high water (springs)

The mean high water (springs) mark is shown to NTL.

Areas of salt marsh, mud flats and so on, often have very complicated tide lines. For ease of digitising and to reduce data volumes, mean high water may be generalised in these areas (not Scotland).

Mean high water (springs) mark is represented in Boundary-Line by a continuous link feature with feature code 0071.

Mean high water (springs) mark is subject to continuous change but the captured alignment of a tide line is a snapshot on one day. It is not practical to revise tide lines very frequently.

Mean low water (springs)

Mean low water (springs) mark is shown as the extent of the realm, except when contained within a seaward extension, when it is then omitted.

Banks of sand, mud, shingle or rock separated from the main line of mean low water (springs), and covered at high tide, are not shown. When there are large areas of these banks separated from the main foreshore by narrow channels, the channels are ignored and the whole bounded by mean low water (springs).

The extension of the line of mean low water (springs) into a channel above [Point B](#) becomes edge of channel and is not shown.

Mean low water (springs) mark, and hence [EOR](#) is subject to continuous change but the captured alignment of a tide line is a snapshot on one day. It is not practical to revise tide lines very frequently.

Normal tidal limit (NTL)

The point at which the level of a river or stream ceases to be affected by the tidal flow. This point is often an artificial barrier such as a lock or weir.

Pier

A pier under which water flows is not normally considered to be within the realm. There are some cases, however, where a structure has specifically been included within the realm by Act or Order, in which case mean high water (springs) mark and EOR is shown around the limits of the structure.

Point B

This is the intangible line across a channel where the level of the river meets the level of the sea at low water.

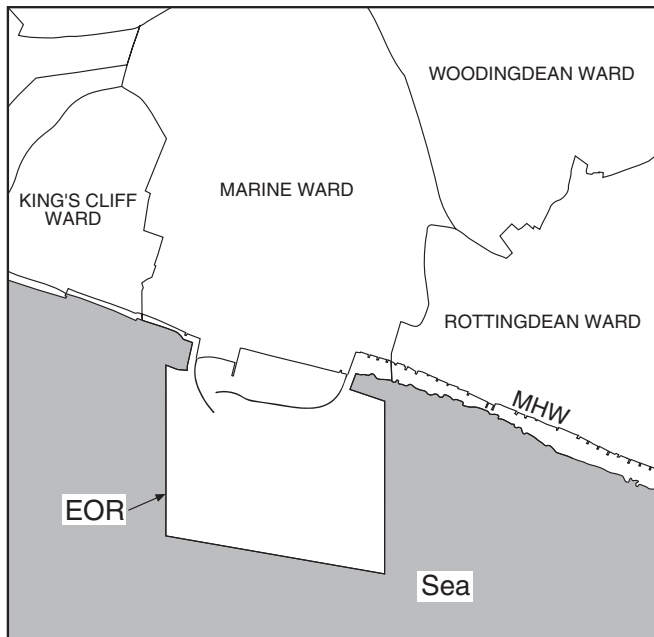
Within large channels or estuaries Point B is defined on the source documents for Boundary-Line, and is therefore shown as [EOR](#).

In small channels, Point B is not shown on the source documents, so is assumed to be along the general line of low water and is shown as EOR.

Seaward extensions

These are artificial extensions to the realm that have been made by Act of Parliament. They extend the local government and parliamentary areas seaward of mean low water (springs) mark.

Figure 3.6: A seaward extension



Structures in the sea

Breakwaters are structures of wood, stone, metal or other material built to break the force of waves. They can be separate from, or joined to, the mainland. If joined, they are generally included in the local government and parliamentary areas. If separate, they are not part of the local government and parliamentary area unless they are placed therein by legislation of some kind, for example, Plymouth breakwater is included in the local government area whilst the centre portion of the Portland Harbour breakwater is not.

Permanent or solid structures in the sea, such as the forts in the Solent off Portsmouth Harbour and Brighton Marina, are usually included in local government and parliamentary areas.

Annexe A Change update: Statutory Instruments (SI) and non-SI changes in May 2008 – Boundary-Line release

England

County	Boundaries D=District/ U/A=Unitary Authority/ LB= London Borough/ Met Dist= Metropolitan District	Op Date	SI Year	SI No	Comments
BEDFORDSHIRE	BEDFORD	01 April 2008	2007	334	Parish Order
DURHAM	DERWENTSIDE	01 April 2008	2007	1185	Parish Order
GLOUCESTERSHIRE	STROUD	01 April 2008	2007	2955	Parish Order
LEICESTERSHIRE	HARBOROUGH	01 April 2008	2007	2705	Parish Order
	HALTON	01 April 2008	2007	3003	Parish Order
DEVON	EAST DEVON	01 April 2008	2007	3422	Parish Order
GLOUCESTERSHIRE	CHELTENHAM	28 November 2007	2007	3421	Parish Order
CHESHIRE	ELLESMERE PORT AND NESTON	01 April 2008	2007	3578	Parish Order
KENT	MAIDSTONE	01 April 2008	2007	3576	Parish Order
HERTFORDSHIRE	HERTSMERE	01 April 2008	2008	43	Parish Order
GLOUCESTERSHIRE	TEWKESBURY	01 April 2008	2007	3577	Parish Order
NOTTINGHAMSHIRE	NEWARK AND SHERWOOD	01 April 2008	2008	179	Parish Order
NORFOLK	NORTH NORFOLK	01 April 2008	2008	180	Parish Order
	ISLE OF WIGHT	01 April 2008	2008	376	Parish Order
NORTHUMBERLAND	BERWICK-UPON-TWEED	01 April 2008	2008	290	Parish Order
GLOUCESTERSHIRE	COTSWOLD	01 April 2008	2008	304	Parish Order
KENT	SEVENOAKS	01 April 2008	2008	422	Parish Order
OXFORDSHIRE	OXFORD	01 April 2008	2008	372	Parish Order
	LEEDS	01 April 2008	2008	421	Parish Order
DERBYSHIRE	HIGH PEAK	01 April 2008	2008	303	Parish Order
KENT	CANTERBURY	04 October 2007	N/A	N/A	Parish of Harbledown renamed Harbledown and Rough Common
LINCOLNSHIRE	WEST LINDSEY	01 May 2008	2007	490	Ward Order
CUMBRIA	BARROW-IN-FURNESS	01 May 2008	2008	427	Ward Order
CUMBRIA	SOUTH LAKELAND	01 May 2008	2008	423	Ward Order
HAMPSHIRE	BASINGSTOKE AND DEANE	01 May 2008	2008	425	Ward Order
HERTFORDSHIRE	WELWYN HATFIELD	01 May 2008	2008	424	Ward Order
CAMBRIDGESHIRE	SOUTH CAMBRIDGESHIRE	01 May 2008	2008	177	Ward Order
	BRADFORD	01 May 2008	2008	173	Ward Order
WARWICKSHIRE	RUGBY	01 May 2008	2007	327	Ward Order

SURREY	TANDRIDGE	01 May 2008	N/A	N/A	Amend ward census codes
CUMBRIA	ALLERDALE	01 May 2008	N/A	N/A	Adjust boundaries at Mean Low Water
CUMBRIA	COPELAND	01 May 2008	N/A	N/A	Adjust Electoral Division boundary
CUMBRIA	all Districts	01 May 2008	N/A	N/A	Adjust District & Parliamentary boundaries
CUMBRIA	SOUTH LAKELAND	01 May 2008	N/A	N/A	Adjust Civil Parish & Parliamentary boundaries
CUMBRIA	SOUTH LAKELAND	01 May 2008	N/A	N/A	Adjust Civil Parish, Electoral Division & Ward boundaries
CUMBRIA	SOUTH LAKELAND	01 May 2008	N/A	N/A	Adjust Civil Parish, Electoral Division & Ward boundaries
DEVON	MID DEVON	01 May 2008	N/A	N/A	Adjust Civil Parish, Electoral Division & Ward boundaries
DEVON	NORTH DEVON	01 May 2008	N/A	N/A	Adjust Civil Parish, Electoral Division & Ward boundaries
DEVON	NORTH DEVON	01 May 2008	N/A	N/A	Adjust Civil Parish boundary
DEVON	TORRIDGE	01 May 2008	N/A	N/A	Adjust Civil Parish, Electoral Division & Ward boundaries
DORSET	EAST DORSET	01 May 2008	N/A	N/A	Adjust Civil Parish & Ward boundary
EAST SUSSEX	WEALDEN	01 May 2008	N/A	N/A	Adjust Civil Parish boundary
GLOUCESTERSHIRE	STROUD	01 May 2008	N/A	N/A	Adjust Civil Parish, Electoral Division & Ward boundaries
HAMPSHIRE	BASINGSTOKE AND DEANE	01 May 2008	N/A	N/A	Adjust Civil Parish boundary
HAMPSHIRE	NEW FOREST	01 May 2008	N/A	N/A	Adjust Civil Parish, Electoral Division & Ward boundaries
KENT	SEVENOAKS	01 May 2008	N/A	N/A	Adjust Civil Parish boundary
KENT	THANET	01 May 2008	N/A	N/A	Adjust District, Parliamentary & Civil Parish boundaries
KENT	DOVER	01 May 2008	N/A	N/A	Adjust District, Parliamentary & Civil Parish boundaries
KENT	CANTERBURY	01 May 2008	N/A	N/A	Adjust Ward boundary
KENT	SEVENOAKS	01 May 2008	N/A	N/A	Adjust District, Parliamentary & Civil Parish boundaries
LANCASHIRE	ROSSENDALE	01 May 2008	N/A	N/A	Adjust Electoral Division & Ward

					boundary
LINCOLNSHIRE	EAST LINDSEY	01 May 2008	N/A	N/A	Parish of North Coates renamed North Cotes
NORTHUMBERLAND	BERWICK-UPON-TWEED	01 May 2008	N/A	N/A	Adjust Civil Parish boundary
SHROPSHIRE	SOUTH SHROPSHIRE	01 May 2008	N/A	N/A	Adjust Civil Parish & Ward boundary
WILTSHIRE	MENDIP	01 May 2008	N/A	N/A	Adjust Electoral Division boundary
	SOUTHAMPTON	01 May 2008	N/A	N/A	Adjust County, Ward & Parliamentary boundaries
	SHEFFIELD	01 May 2008	N/A	N/A	Adjust Borough Constituency boundary
	WARRINGTON	01 May 2008	N/A	N/A	Adjust Civil Parish & Ward boundary
	CITY OF LONDON	01 May 2008	N/A	N/A	Adjust Ward boundary
	RICHMOND-UPON-THAMES	01 May 2008	N/A	N/A	Adjust London Borough, Greater London Assembly Constituency, London Borough Ward & Parliamentary boundaries

Wales

U/A=Unitary Authority	Op Date	SI Year (If applicable)	SI number (if applicable)	Comments
POWYS	01 May 2008	N/A	N/A	Adjust Community boundary
SWANSEA	01 May 2008	N/A	N/A	Pont-Lliw and Tircoed Community amended to Pontlliw and Tircoed
VALE OF GLAMORGAN	01 May 2008	N/A	N/A	St. Brides Community amended to St. Bride's

Scotland

U/A=Unitary Authority	Op Date	SI Year (If applicable)	SI number (if applicable)	Comments
ABERDEEN CITY	01 May 2008	N/A	N/A	Adjust Mean High Water
ABERDEENSHIRE	01 May 2008	N/A	N/A	Adjust Westminster Constituency boundary
ABERDEENSHIRE	01 May 2008	N/A	N/A	Adjust Scottish Parliamentary Constituency boundary
DUMFRIES AND GALLOWAY	01 May 2008	N/A	N/A	Adjust boundaries at Mean Low Water
EAST DUNBARTONSHIRE	01 May 2008	N/A	N/A	Adjust Ward boundary
EAST DUNBARTONSHIRE	01 May 2008	N/A	N/A	Adjust Westminster Constituency & Ward boundary

FALKIRK / WEST LOTHIAN	01 May 2008	N/A	N/A	Adjust Scottish Parliamentary Constituency & Scottish Parliamentary Electoral Region boundaries
FIFE	01 May 2008	N/A	N/A	Adjust Westminster Constituency boundary
HIGHLAND	01 May 2008	N/A	N/A	Adjust boundaries at Mean Low Water
MORAY	01 May 2008	N/A	N/A	Adjust Ward boundary
RENFREWSHIRE	01 May 2008	N/A	N/A	Adjust Westminster Constituency boundary

Changes not incorporated into the May 2008 Boundary-Line update

Residual Statutory Instruments (SIs) and non-SIs

County	Boundaries D=District/ U/A=Unitary Authority/ LB= London Borough/ Met Dist= Metropolitan District	Op Date	SI Year	SI No	Comments
CESHIRE	Cheshire West and Chester and Cheshire East	01 May 2008	2008	Not available	Structural Changes. From 1 May 2008 Cheshire will be split into the new Unitary authorities; Cheshire West and Chester and Cheshire East.
	Pendle	01 April 2008	2008	549	*Parish Order
	Lichfield	01 April 2008	2008	Not available	*Parish Order
	St Helens	01 April 2008	2008	Not available	Parish Order
	Kettering	01 April 2008	2008	Not available	Parish Order

NOTE: Boundary-Line contains boundaries that have an operative date (See [Operative dates](#)), within the biannually release (with the exception of the effective Westminster Parliamentary boundaries (see [Effective Dates](#)) which are supplied as separate files. Other boundaries that have an operative date post dating the biannual releases and unsigned SIs will be incorporated into the appropriate Boundary Line update.

Statutory Instruments that are operative in October but signed off too late for inclusion in this May 2008 product would be included in the next appropriate release.

Annexe B Boundaries that relate to Government Office Regions (GORs)

GORs Government Office Regions	County and Unitary Authority (UA)	
East Of England		
	Bedfordshire County	Suffolk County
	Cambridgeshire County	City of Peterborough
	Essex County	Luton
	Hertfordshire County	Southend-on-Sea
	Norfolk County	Thurrock
East Midlands		
	Derbyshire County	City of Derby
	Leicestershire County	City of Leicester
	Lincolnshire County	City of Nottingham
	Northamptonshire County	Rutland
	Nottinghamshire County	
London		
	Kingston upon Thames London Borough	Enfield London Borough
	Croydon London Borough	Waltham Forest London Borough
	Bromley London Borough	Redbridge London Borough
	Hounslow London Borough	Sutton London Borough
	Ealing London Borough	Richmond upon Thames London Borough
	Havering London Borough	Merton London Borough
	Hillingdon London Borough	Wandsworth London Borough
	Harrow London Borough	Hammersmith and Fulham London Borough
	Brent London Borough	Kensington and Chelsea London Borough
	Barnet London Borough	City of Westminster London Borough
	Lambeth London Borough	Camden London Borough
	Southwark London Borough	Tower Hamlets London Borough
	Lewisham London Borough	Islington London Borough
	Greenwich London Borough	Hackney London Borough
	Bexley London Borough	Haringey London Borough
	Kingston upon Thames London Borough	Newham London Borough
	Barking and Dagenham London Borough	City and County of the City of London Borough
North West		
	Cheshire County	Sefton Metropolitan District
	Cumbria County	Stockport Metropolitan District
	Lancashire County	St. Helens Metropolitan District
	Bolton Metropolitan District	Tameside Metropolitan District
	Bury Metropolitan District	Trafford Metropolitan District

	Knowsley Metropolitan District	Wigan Metropolitan District
	Liverpool Metropolitan District	Wirral Metropolitan District
	Manchester Metropolitan District	Blackburn with Darwen
	Oldham Metropolitan District	Blackpool
	Rochdale Metropolitan District	Halton
	Salford Metropolitan District	Warrington
North East		
	Durham County	Darlington
	Northumberland County	Hartlepool
	Gateshead Metropolitan District	Middlesbrough
	Newcastle upon Tyne Metropolitan District	Redcar and Cleveland
	North Tyneside Metropolitan District	Stockton-on-Tees
	South Tyneside Metropolitan District	
Scotland		
	Angus	West Dunbartonshire
	Clackmannanshire	West Lothian
	Dundee City	Highland
	East Ayrshire	Moray
	East Dunbartonshire	Orkney Islands
	East Renfrewshire	Na H-Eileanan an Iar
	Falkirk	Argyll and Bute
	Glasgow City	Aberdeenshire
	Inverclyde	Fife
	Midlothian	Aberdeen City
	North Lanarkshire	City of Edinburgh
	Perth and Kinross	East Lothian
	Renfrewshire	Shetland Islands
	Scottish Borders	North Ayrshire
	South Lanarkshire	Dumfries and Galloway
	Stirling	South Ayrshire
South East		
	Buckinghamshire County	Milton Keynes
	East Sussex County	Reading
	Hampshire County	Slough
	Kent County	The City of Brighton and Hove
	Oxfordshire County	West Berkshire
	Surrey County	Windsor and Maidenhead
	West Sussex County	Wokingham
	Bracknell Forest	Isle of Wight
	City of Southampton	City of Portsmouth
	Medway	
South West		
	Dorset County	Bournemouth
	Gloucestershire County	City of Bristol

	Somerset County	Poole
	Wiltshire County	South Gloucestershire
	Devon County	Swindon
	Cornwall County	Torbay
	Isles of Scilly	North Somerset
	Bath and North East Somerset	City of Plymouth
Wales		
	Abertawe – Swansea	Sir Ddinbych – Denbighshire
	Blaenau Gwent – Blaenau Gwent	Sir Fynwy – Monmouthshire
	Bro Morgannwg – the Vale of Glamorgan	Sir Gaerfyrddin – Carmarthenshire
	Caerffili – Caerphilly	Sir y Fflint – Flintshire
	Casnewydd – Newport	Tor-faen – Torfaen
	Castell-nedd Port Talbot – Neath Port Talbot	Wreccsam – Wrexham
	Conwy – Conwy	Sir Ynys Mon – Isle of Anglesey
	Merthyr Tudful – Merthyr Tydfil	Gwynedd – Gwynedd
	Pen-y-bont ar Ogwr – Bridgend	Caerdydd – Cardiff
	Powys – Powys	Sir Ceredigion – Ceredigion
	Rhondda, Cynon, Taf – Rhondda, Cynon, Taff	Sir Benfro – Pembrokeshire
West Midlands		
	Shropshire County	Dudley Metropolitan District
	Staffordshire County	Sandwell Metropolitan District
	Warwickshire County	Solihull Metropolitan District
	Worcestershire County	Walsall Metropolitan District
	Birmingham Metropolitan District	City of Stoke-on-Trent
	City of Wolverhampton Metropolitan District	County of Herefordshire
	Coventry Metropolitan District	Telford and Wrekin
Yorkshire and the Humber		
	North Yorkshire County	Sheffield Metropolitan District
	Barnsley Metropolitan District	Wakefield Metropolitan District
	Bradford Metropolitan District	City of Kingston upon Hull
	Calderdale Metropolitan District	East Riding of Yorkshire
	Doncaster Metropolitan District	North East Lincolnshire
	Kirklees Metropolitan District	North Lincolnshire
	Leeds Metropolitan District	York
	Rotherham Metropolitan District	

Annexe C Statistical classifications aligned to Boundary-Line

Information published by the Office for National Statistics (ONS) identifies the European classification system called NUTS (Nomenclature of Units for Territorial Statistics), this information provides a breakdown of UK regions and countries, allowing for a comparable view of economic activity across the European Union.
<http://www.statistics.gov.uk/geography/nuts.asp>

NUTS1 – English Government Office Regions, Wales, Scotland and Northern Ireland.

NUTS2 – 37 areas, mainly groups of counties and unitary authorities.

NUTS3 – 133 areas, principally individual counties and unitary authorities.

NUTS 1	NUTS 2	NUTS 3	LAU 1 areas
South West	Gloucestershire, Wiltshire and North Somerset	Bristol, City of North and North East Somerset, South Gloucestershire Gloucestershire Swindon Wiltshire CC	Bristol, City of Bath and North East Somerset North Somerset South Gloucestershire Cheltenham Cotswold Forest of Dean Gloucester Stroud Tewkesbury Swindon Kennet North Wiltshire Salisbury West Wiltshire
	Dorset and Somerset	Bournemouth and Poole Dorset CC Somerset	Bournemouth Poole Christchurch East Dorset North Dorset Purbeck West Dorset Weymouth and Portland Mendip Sedgemoor South Somerset Taunton Deane West Somerset
	Cornwall and Isles of Scilly	Cornwall and Isles of Scilly	Caradon Carrick Kerrier North Cornwall Penwith Restormel Isles of Scilly
	Devon	Plymouth Torbay Devon CC	Plymouth Torbay East Devon Exeter Mid Devon North Devon South Hams Teignbridge Torridge West Devon

NUTS 1	NUTS 2	NUTS 3	LAU 1 areas
South East	Berkshire, Buckinghamshire and Oxfordshire	Berkshire	Bracknell Forest Reading Slough West Berkshire Windsor and Maidenhead Wokingham
		Milton Keynes Buckinghamshire CC	Milton Keynes Aylesbury Vale Chiltern South Bucks Wycombe
		Oxfordshire	Cherwell Oxford South Oxfordshire Vale of White Horse West Oxfordshire
	Surrey, East and West Sussex	Brighton and Hove East Sussex CC	Brighton and Hove Eastbourne Hastings Lewes Rother Wealden
		Surrey	Elmbridge Epsom and Ewell Guildford Mole Valley Reigate and Banstead Runnymede Spelthorne Surrey Heath Tandridge Waverley Woking
		West Sussex	Adur Arun Chichester Crawley Horsham Mid Sussex Worthing
Hampshire and Isle of Wight	Portsmouth Southampton Hampshire CC	Portsmouth Southampton Basingstoke and Deane East Hampshire Eastleigh Fareham Gosport Hart Havant New Forest Rushmoor Test Valley Winchester	
	Isle of Wight	Isle of Wight	
	Medway	Medway	

NUTS 1	NUTS 2	NUTS 3	LAU 1 areas
		Kent CC	Ashford Canterbury Dartford Dover Gravesham Maidstone Sevenoaks Shepway Swale Thanet Tonbridge and Malling Tunbridge Wells
East of England	East Anglia	Peterborough Cambridgeshire CC Norfolk Suffolk	Peterborough Cambridge East Cambridgeshire Fenland Huntingdonshire South Cambridgeshire Breckland Broadland Great Yarmouth King's Lynn and West Norfolk North Norfolk Norwich South Norfolk Babergh Forest Heath Ipswich Mid Suffolk St. Edmundsbury Suffolk Coastal Waveney
	Bedfordshire and Hertfordshire	Luton Bedfordshire CC Hertfordshire	Luton Bedford Mid Bedfordshire South Bedfordshire Broxbourne Dacorum East Hertfordshire Hertsmere North Hertfordshire St Albans Stevenage Three Rivers Watford Welwyn Hatfield
	Essex	Southend-on-Sea Thurrock Essex CC	Southend-on-Sea Thurrock Basildon Braintree Brentwood Castle Point Chelmsford Colchester Epping Forest Harlow Maldon Rochford Tendring Uttlesford

NUTS 1	NUTS 2	NUTS 3	LAU 1 areas
East Midlands	Derbyshire and Nottinghamshire	Derby	Derby
		East Derbyshire	Bolsover Chesterfield North East Derbyshire
		South and West Derbyshire	Amber Valley Derbyshire Dales Erewash High Peak South Derbyshire
		Nottingham	Nottingham
		North Nottinghamshire	Ashfield Bassetlaw Mansfield Newark and Sherwood
		South Nottinghamshire	Broxtowe Gedling Rushcliffe
	Leicestershire, Rutland and Northamptonshire	Leicester	Leicester
		Leicestershire CC and Rutland	Blaby Charnwood Harborough Hinckley and Bosworth Melton North West Leicestershire Oadby and Wigston Rutland
		Northamptonshire	Corby Daventry East Northamptonshire Kettering Northampton South Northamptonshire Wellingborough
	Lincolnshire	Lincolnshire	Boston East Lindsey Lincoln North Kesteven South Holland South Kesteven West Lindsey
London	Inner London	Inner London – West	Camden City of London Hammersmith and Fulham Kensington and Chelsea Wandsworth Westminster
		Inner London – East	Hackney Haringey Islington Lambeth Newham Southwark Lewisham Tower Hamlets

NUTS 1	NUTS 2	NUTS 3	LAU 1 areas
	Outer London	Outer London – East and North East	Barking and Dagenham Bexley Enfield Greenwich Havering Redbridge Waltham Forest
		Outer London – South	Bromley Croydon Kingston upon Thames Merton Sutton
		Outer London – West and North West	Barnet Brent Ealing Harrow Hillingdon Hounslow Richmond upon Thames
North West	Cumbria	West Cumbria	Allerdale Barrow-in-Furness Copeland
		East Cumbria	Carlisle Eden South Lakeland
	Cheshire	Halton and Warrington	Halton Warrington
		Cheshire CC	Chester Congleton Crewe and Nantwich Ellesmere Port & Neston Macclesfield Vale Royal
	Greater Manchester	Greater Manchester South	Manchester Salford Stockport Tameside Trafford
		Greater Manchester North	Bolton Bury Oldham Rochdale Wigan
	Lancashire	Blackburn with Darwen	Blackburn with Darwen
		Blackpool	Blackpool
		Lancashire CC	Burnley Chorley Fylde Hyndburn Lancaster Pendle Preston Ribble Valley Rossendale South Ribble West Lancashire Wyre

NUTS 1	NUTS 2	NUTS 3	LAU 1 areas
	Merseyside	East Merseyside Liverpool Sefton The Wirral	Knowsley St. Helens Liverpool Sefton Wirral
North East	Tees Valley and Durham Northumberland and Tyne and Wear	Hartlepool and Stockton-on-Tees South Teeside Darlington Durham CC Northumberland Tyneside Sunderland	Hartlepool Stockton-on-Tees Middlesbrough Redcar and Cleveland Darlington Chester-le-Street Derwentside Durham Easington Sedgefield Teesdale Wear Valley Alnwick Berwick-upon-Tweed Blyth Valley Castle Morpeth Tynedale Wansbeck Gateshead Newcastle upon Tyne North Tyneside South Tyneside Sunderland
Scotland	Eastern Scotland Highlands and Islands	Angus and Dundee City Clackmannanshire and Fife East Lothian and Midlothian Scottish Borders Edinburgh, City of Falkirk Perth & Kinross and Stirling West Lothian Caithness & Sutherland and Ross & Cromarty Inverness & Nairn, West Moray and Badenoch & Strathspey Lochaber, Skye & Lochalsh, Arran & Cumbrae and Argyll & Bute Eilean Siar (Western Isles) Orkney Islands Shetland Islands	Angus Dundee City Clackmannanshire Fife East Lothian Midlothian Scottish Borders Edinburgh, City of Falkirk Perth & Kinross and Stirling West Lothian Caithness and Sutherland Ross and Cromarty Badenoch and Strathspey Inverness and Nairn West Moray Argyll and Bute UA Islands Argyll and the Islands LEC Mainland Arran and the Cumbraes Lochaber Skye and Lochalsh Eilean Siar (Western Isles) Orkney Islands Shetland Islands

NUTS 1	NUTS 2	NUTS 3	LAU 1 areas
	North Eastern Scotland	Aberdeen City, Aberdeenshire and North East Moray	Aberdeen City Aberdeenshire North East Moray
		East Dunbartonshire, West Dunbartonshire and Helensburgh & Lomond	East Dunbartonshire Helensburgh and Lomond West Dunbartonshire
	South Western Scotland	Dumfries & Galloway	Dumfries & Galloway
		East Ayrshire and North Ayrshire mainland	East Ayrshire North Ayrshire mainland
		Glasgow City	Glasgow City
		Inverclyde, East Renfrewshire and Renfrewshire	East Renfrewshire Inverclyde Renfrewshire
		North Lanarkshire	North Lanarkshire
		South Ayrshire	South Ayrshire
		South Lanarkshire	South Lanarkshire
Wales	West Wales and The Valleys	Isle of Anglesey	Isle of Anglesey
		Gwynedd	Gwynedd
		Conwy and Denbighshire	Conwy Denbighshire
		South West Wales	Carmarthenshire Ceredigion Pembrokeshire
		Central Valleys	Merthyr Tydfil Rhondda, Cynon, Taff
		Gwent Valleys	Blaenau Gwent Caerphilly Torfaen
		Bridgend and Neath Port Talbot	Bridgend Neath Port Talbot
		Swansea	Swansea
	East Wales	Monmouthshire and Newport	Monmouthshire Newport
		Cardiff and Vale of Glamorgan	Cardiff Vale of Glamorgan, The
		Flintshire and Wrexham	Flintshire Wrexham
		Powys	Powys
West Midlands	Herefordshire, Worcestershire and Warwickshire	Herefordshire, County of	Herefordshire, County of
		Worcestershire	Bromsgrove Malvern Hills Redditch Worcester Wychavon Wyre Forest
		Warwickshire	North Warwickshire Nuneaton and Bedworth Rugby Stratford-on-Avon Warwick

NUTS 1	NUTS 2	NUTS 3	LAU 1 areas
	Shropshire and Staffordshire	Telford and Wrekin Shropshire CC	Telford and Wrekin Bridgnorth North Shropshire Oswestry Shrewsbury and Atcham South Shropshire
		Stoke-on-Trent Staffordshire CC	Stoke-on-Trent Cannock Chase East Staffordshire Lichfield Newcastle-under-Lyme South Staffordshire Stafford Staffordshire Moorlands Tamworth
	West Midlands	Birmingham Solihull Coventry Dudley and Sandwell	Birmingham Solihull Coventry Dudley Sandwell
		Walsall and Wolverhampton	Walsall Wolverhampton
Yorkshire and The Humber	East Riding and North Lincolnshire	Kingston upon Hull, City of	Kingston upon Hull, City of
		East Riding of Yorkshire North and North East Lincolnshire	East Riding of Yorkshire North East Lincolnshire North Lincolnshire
	North Yorkshire	York North Yorkshire CC	York Craven Hambleton Harrogate Richmondshire Ryedale Scarborough Selby
	South Yorkshire	Barnsley, Doncaster and Rotherham	Barnsley Doncaster Rotherham
		Sheffield	Sheffield
	West Yorkshire	Bradford Leeds Calder, Kirklees and Wakefield	Bradford Leeds Calder Kirklees Wakefield

Your name:

Organisation:

Address:

.....

.....

Postcode:

Phone:

Fax:

Email:

Quotation or order reference:

Please record your comments or feedback in the space below. We will acknowledge receipt of your form within three (3) working days and provide you with a full reply or a status report within 21 working days.

If you are posting this form, please send it to:

Boundary-Line Product Manager, Ordnance Survey, Romsey Road, SOUTHAMPTON, SO16 4GU.

If you wish to return it by fax, please dial 023 8079 2039.

Any personal information that you supply with this report form will be used by Ordnance Survey only in the improvement of its products and services. It will not be made available to third parties.

Boundary-Line

Technical specification

Contents

Section	Page no	
Introduction	44	
Purpose of this specification and disclaimer	44	
Copyright in this specification	44	
Using the technical specification	44	
What you need to use Boundary-Line	44	
Hardware	44	
Software	44	
Chapter 1	Product contents	45
Source of Boundary-Line	45	
Update currency	45	
Superseded boundaries	45	
Census agency codes	45	
Tide lines and rivers	45	
Resolution	45	
Completeness	45	
Boundary-Line data properties	46	
Boundary-Line data structure	46	
Boundary-Line output resolution	46	
Chapter 2	MapInfo MID/MIF	47
An overview of Boundary-Line in MapInfo® MID/MIF	47	
Structure of Boundary-Line in MapInfo	47	
Area features	47	
Link features MHW	47	
Coordinate system	47	
MID/MIF table structures	48	
'Effective' Westminster (Parliamentary) Constituency boundaries	48	
MID/MIF (Oct 2007)	48	
Example of a MID file record: County	48	
Example of a MIF file header: County	48	
Example of a MIF file header: Mean high water	49	
Example of a MID file record: Mean high water	49	
File names for layered MID/MIF	49	
Directory names for nested MID/MIF	49	
Chapter 3	ESRI shapefile	50
An overview of Boundary-Line in ESRI shapefile	50	
Structure of Boundary-Line in shapefile	50	
Area features	50	
Link features MHW	50	
Coordinate system	50	
Shapefile table structures	51	
'Effective' Westminster (Parliamentary) Constituency boundaries	51	
shapefile (Oct 2007)	51	
Example field record for shapefile: County	51	
Example field record for shapefile: Mean high water	52	
File names for layered shapefile	52	
Directory names for nested shapefile	52	
Chapter 4	NTF explained	53
An overview of Boundary-Line in NTF	53	
Conventions used in this technical specification	53	
Version management	54	
Product version	54	
Product release	54	
NTF version	54	
Specific Boundary-Line NTF Information	54	

Area measurement	54
Coordinates	54
Link features	54
Names	55
Census agency codes	55
Record size	55
Record terminator {EOR}.....	55
Other features	55
Unique identifiers for administrative unit.....	55
Relationships between record IDs	56
Tidal and other coastal information.....	57
Complex polygons	57
Data classification and metadata	57
Attribute codes	57
Explicit administration and/or voting area relationships.....	59
Transfer set structure.....	60
Volume records.....	60
Database records.....	60
Section records.....	61
Section body data	61
Section body records	62
How the section body data is arranged	62
Section body record structure	63
Data supply structure	63
Supply of data on formatted media.....	63
Chapter 5 Record structures for the transfer of Boundary-Line in NTF	64
NTF record list.....	64
Volume Header Record [VOLHDREC] 01	65
Database Header Record [DBHREC] 02.....	66
Feature Classification Record [FEATCLASS] 05.....	67
Section Header Record [SECHREC] 07.....	67
Attribute Record [ATTREC] 14 for Line Record [LINEREC] 23	69
Attribute Record [ATTREC] 14 for Collection of Features Record [COLLECT] 34.....	70
Attribute Record [ATTREC] 14 for Polygon Record [POLYGON] 31 and Complex Polygon Record [CPOLY] 33	72
Geometry Record [GEOMETRY1] 21	73
Line Record [LINEREC] 23	73
Chain Record [CHAIN] 24.....	74
Polygon Record [POLYGON] 31.....	74
Complex Polygon Record [CPOLY] 33.....	75
Collection of Features Record [COLLECT] 34.....	76
Attribute Description Record [ATTDESC] 40	77
Code List Record [CODELIST] 42	78
Volume Termination Record [VOLTERM] 99.....	79
Annexe A Glossary.....	80

v1.2 – 05/2008

Introduction

Purpose of this specification and disclaimer

This is the technical specification (hereafter referred to as the specification) applicable to the Boundary-Line (hereafter referred to as the product) which is referred to in the Framework Direct Licence, Specific Use Framework Partner Licence or your other customer contract for the product.

We may change the information in this specification at any time, giving you the notice period specified in the customer contract made between you and Ordnance Survey.

We do not accept responsibility for the content of any third party websites referenced or accessed in or through this specification, any other contractual documentation, and/or the Ordnance Survey website.

Copyright in this specification

This specification, (including for the avoidance of doubt any mapping images reproduced herein), is © Crown copyright 2008. All rights reserved.

Any part of this specification may be copied for use internally in your organisation or business so that you can use Boundary-Line for the purpose for which it is licensed to your organisation or business (but not otherwise).

No part of this specification may be reproduced or transmitted in any form or by any means (including electronically) for commercial exploitation without the prior written consent of Ordnance Survey.

No part of this specification may be copied or incorporated in products, services or publications that you generate for onward sale, or as free promotional or support materials, without the prior written consent of Ordnance Survey.

Using the technical specification

This technical specification for Boundary-Line provides specific details of the structure, content and format of the product for those using the data in geographic information, or other, computer system. It should be used in conjunction with the introductory Boundary-Line user guide which gives guidelines and advice on how a customer might derive the maximum value from the product.

Ordnance Survey is committed to providing customers with consistently high quality geographic information. As such Ordnance Survey regularly applies several data quality measures to the product. These quality measurements are based on the principles identified in ISO 19113, *Geographic Information-Quality principles (2002)*.

Please refer to the glossary if you are unfamiliar with any of the words or terms used. The glossary can be found at [annexe A](#).

What you need to use Boundary-Line

Hardware

Provided that sufficient memory, storage facilities and a suitable software viewer application (see below) are available, there are no constraints on the hardware platforms that can be used. The range of hardware that can typically be used varies from higher specification personal computers (PCs) to mainframe computers.

Software

Boundary-Line is inert data and does not include software for data manipulation. To fully exploit Boundary-Line it is necessary to use appropriate application software. There are many proprietary systems available and Ordnance Survey publishes a list of GIS, computer-aided design (CAD) and digital mapping system suppliers who have independently confirmed their software can import Ordnance Survey NTF format data.

Chapter 1 Product contents

Source of Boundary-Line

The main data sources used for the creation of Boundary-Line are Ordnance Survey's 1:10 000 scale boundary record sheets and Landplan digital data.

Update currency

Boundary-Line is updated twice a year, spring and autumn. The updated product is a full replacement for all the listed administrative and electoral boundaries. The represented boundaries and administrative unit names are defined and modified by Orders, Acts and Statutory Instruments (SIs). Changes that are operative from the 1st week of May in the current year of release will be included. Changes to Westminster Constituencies which are effective from the date of the next General Election will be included as separate files.

NOTE: Orders, Acts and SIs in exceptional circumstances due to processing or constitutional constraints may be excluded until the next suitable release.

Superseded boundaries

Boundaries are no longer shown in Boundary-Line if they have been superseded at the time of the annual snapshot of boundaries that each release of Boundary-Line represents.

Census agency codes

Revisions to census agency codes are incorporated into Boundary-Line as soon as practicable after the information is made available to Ordnance Survey.

Tide lines and rivers

Additional coastline reconciliation with the Landplan product was introduced in May 2005. Changes to the Boundary-Line tide lines, plus natural and gradual changes to rivers and streams, have been implemented along-side the previous boundary/coast association to enhance the MHW FC0071.

All boundary alignment changes in Boundary-Line will be reported in the Change Update document accompanying each release of Boundary-Line.

Resolution

The resolution of the coordinate system is 0.1 m. However, it is not possible to calculate meaningful accuracy limits for Boundary-Line data, due to both the graphic nature and scale of the primary source 1:10 000 scale published mapping. Such mapping is subject to limited map generalisation, where an impression of the ground detail is made due to the complexity of the detail and importance of certain features such as roads. This means that boundary alignments are cartographically represented in areas where accurate positional representation would be impossible.

Boundary-Line is derived from the basic scale of 1:10 000. The relationship of boundaries to ground detail mirrors the accuracy achieved on the source Ordnance Survey 1:10 000 Landplan. A consequence of this is if Boundary-Line is superimposed upon boundaries in basic scales Land-Line® data, variations in the two alignments will be seen.

Completeness

Completeness is a measure of the correspondence between the real world and the specified data content.

During digitising all Boundary-Line data is checked thoroughly against source documents to ensure as far as reasonably possible that no features have been omitted or misaligned.

Boundary-Line data properties

Boundary-Line is a structured link and polygon dataset.

The data comprises three levels of features:

- 1 the administrative unit has attributes which include the administrative unit's name and census code. The administrative unit feature is classified by means of a feature type. It also has explicit pointers to the polygons that define its area;
- 2 the polygon includes attributes that define its area value; it also has explicit pointers to the links that chains (or makes up) its edge and may have pointers to holes within the area; and
- 3 the links have a geometry that defines their shape.

Administrative units, polygons and links have unique identifiers to enable you to create consistent references between successive releases of Boundary-Line.

Boundary-Line data structure

Real-world administrative and voting units are modelled and named and have explicit pointers to the polygons that define their area of influence.

Boundary-Line NTF data is defined geometrically as a structured link and polygon database. Linear boundary features are represented as links – a series of connected coordinated points. Chains of one or more links form explicit closed polygons.

Each NTF polygon has explicit pointers to the links that represent its boundaries.

NTF link geometry and polygon chains within the data model determine the geometric (positional) characteristics of the data.

Each real-world administrative or electoral voting unit is classified by means of an area code. The polygons are classified indirectly by the administrative or electoral voting unit collection in which they appear. These polygons within the data model also have associated attributes – these give the entities meaning, representing the geometric characteristic of an entity with items like area or a unique identity. Boundary links are classified indirectly by the polygon chains in which they appear.

Administrative or electoral voting units, polygons and links each have unique identifiers that enable you to create consistent references between successive releases of Boundary-Line.

Boundary-Line output resolution

A suggested output within 25% of the source scale (1:10 000) should allow all data to be plotted or displayed without distortions occurring

Country	England	Scotland	Wales
Format	NTF	NTF	NTF
Amount of files	656	100	68
Size	197 Mb	244 Mb	39.9 Mb
Format	Shapefile (nested)	Shapefile (nested)	Shapefile (nested)
Amount of files	2772	537	351
Size	417 Mb	305 Mb	62.9 Mb
Format	Shapefile (layered)	Shapefile (layered)	Shapefile (layered)
Amount of files	30	24	24
Size	409 Mb	300 Mb	62 Mb
Format	MID/MIF (nested)	MID/MIF (nested)	MID/MIF (nested)
Amount of files	1848	358	234
Size	469 Mb	334 Mb	71.7 Mb
Format	MID/MIF (layered)	MID/MIF (layered)	MID/MIF (layered)
Amount of files	20	16	16
Size	467 Mb	331 Mb	71.2 Mb

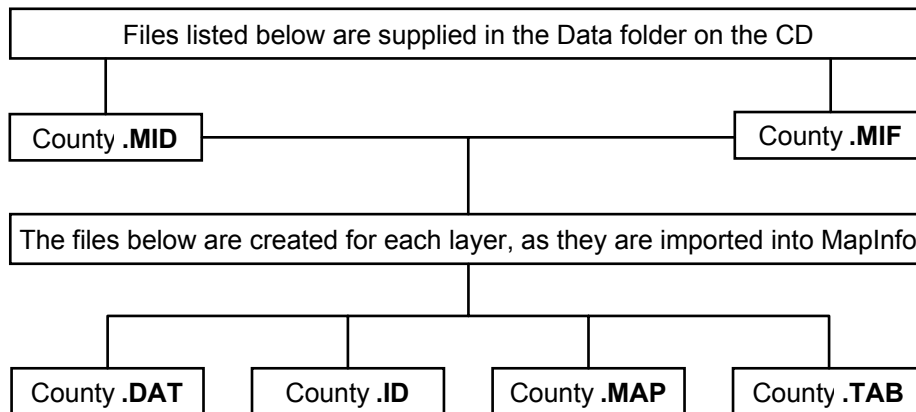
Chapter 2 MapInfo MID/MIF

An overview of Boundary-Line in MapInfo® MID/MIF

The transfer format is as defined by the MapInfo Professional User's Guide: MIF Export – MapInfo Interchange Format (MIF) is an ASCII file format that can fully describe a MapInfo database. Both graphic and tabular data are exported into MIF files. The graphic data is in a file with a *.mif* extension, and the tabular data is in a file with a *.mid* extension.

MapInfo Interchange Format files can be translated into other formats with other programs.

An overview of the data structure of a Boundary-Line file in MID/MIF is shown below.



Structure of Boundary-Line in MapInfo

Area features

Area Features are Polygons with attributes added.

Link features MHW

Links represent all linear features; that is boundaries, [extent of the realm](#) and [mean high water \(springs\)](#) mark.

All links are broken when they intersect with one another.

The first and last coordinate pairs in a link correspond exactly with the end coordinates of the adjoining link(s).

Links may comprise up to several thousand line segments.

Coordinate system

The coordinate system is National Grid (NG).

The National Grid coordinates are to a resolution of 0.1 metre. This is the resolution of the source data.

MID/MIF table structures

Regions		Polylines	
Title	Type	Title	Type
Name	Char (60)	Feature_Code	Char (4)
Area_Code	Char (3)	Feature_Description	Char (21)
Area_Description	Char (50)	File_Name	Char (50)
File_Name	Char (50)	Feature_Serial_Number	Integer
Feature_Serial_Number	Integer	Global_Link_ID	Integer
Collection_Serial_Number	Integer		
Global_Polygon_ID	Integer		
Admin_Unit_ID	Integer		
Census_Code	Char (7)		
Hectares	Decimal (12, 3)		
Non_Inland_Area	Decimal (12, 3)		
Area_Type_Code	Char (2)		
Area_Type_Description	Char (25)		
Non_Area_Type_Code	Char (3)		
Non_Area_Type_Description	Char (36)		

'Effective' Westminster (Parliamentary) Constituency boundaries

MID/MIF (Oct 2007)

These boundaries will have the following table structure;

Regions	
Title	Type
Name	Char (70)

Example of a MID file record: County

```
"Bedfordshire County","CTY","County","BEDFORDSHIRE_COUNTY",  
19,489,40935,1158,"09",119207.686,0.000,"AA","CIVIL ADMINISTRATION AREA","",""
```

Example of a MIF file header: County

```
Version 300  
Charset "WindowsLatin1"  
Delimiter ","  
CoordSys Earth Projection 8, 79, "m", -2, 49, 0.9996012717, 400000, -100000 Bounds (-7845061.1011,  
-15524202.1641) (8645061.1011, 4470074.53373)  
Columns 15  
Name Char(60)  
Area_Code Char(3)  
Area_Description Char(50)  
File_Name Char(50)  
Feature_Serial_Number Integer  
Collection_Serial_Number Integer  
Global_Polygon_ID Integer  
Admin_Unit_ID Integer  
Census_Code Char(7)  
Hectares Decimal(12, 3)  
Non_Inland_Area Decimal(12, 3)  
Area_Type_Code Char(2)  
Area_Type_Description Char(25)  
Non_Area_Type_Code Char(3)  
Non_Area_Type_Description Char(36)
```


Example of a MIF file header: Mean high water

Version 300
Charset "WindowsLatin1"
Delimiter ","
CoordSys Earth Projection 8, 79, "m", -2, 49, 0.9996012717, 400000, -100000 Bounds (-7845061.1011, -15524202.1641) (8645061.1011, 4470074.53373)
Columns 5
Feature_Code Char(4)
Feature_Description Char(5)
File_Name Char(50)
Feature_Serial_Number Integer
Global_Link_ID Integer
Data

Example of a MID file record: Mean high water

"0071","High","CAMBRIDGESHIRE_COUNTY",982,58737

File names for layered MID/MIF

England

County (inc GLAs)
county_electoral_division
district_borough_unitary
district_borough_unitary_ward
european_region
greater_london_const
high_water
parish

Scotland

district_borough_unitary
district_borough_unitary_ward
european_region
high_water
parish
scotland_and_wales_const
scotland_and_wales_region
westminster_const

Wales

district_borough_unitary
european_region
high_water
parish
scotland_and_wales_const
scotland_and_wales_region
unitary_electoral_division
westminster_const

Directory names for nested MID/MIF

England

County
European_Region
London Administration

Metropolitan_District
Unitary_Authority
Westminster_Constituency

Scotland

European_Region
Scottish_Parliamentary_Electoral_Region
Unitary_Authority
Welsh_Assembly_Electoral_Region
Westminster_Constituency

Wales

European_Region
Unitary_Authority

Westminster_Constituency

NOTE: See the user guide, chapter 3, [Relationships of administrative areas](#) for a hierarchical relationship of the boundaries contained with these files and directories.

Chapter 3 ESRI shapefile

An overview of Boundary-Line in ESRI shapefile

ESRI shapefiles are a simple, non-topological format for storing the geometric location and attribute information of geographic features. A shapefile is one of the spatial data formats that you can work with in ArcGIS.

The shapefile format defines the geometry and attributes of geographically-referenced features in as many as five files with specific file extensions that should be stored in the same project workspace. They are:

.shp – the file that stores the feature geometry.

.shx – the file that stores the index of the feature geometry.

.dbf – the dBASE file that stores the attribute information of features. When a shapefile is added as a theme to a view, this file is displayed as a feature table.

.sbn and **.sbx** – the files that store the spatial index of the features. These two files will only exist if you perform theme on theme selection, spatial joins, or create an index on a theme's SHAPE field.

Structure of Boundary-Line in shapefile

Area features

Area Features are Polygons with attributes added.

Link features MHW

Links represent all linear features; that is boundaries, [extent of the realm](#) and [mean high water \(springs\)](#) mark.

All links are broken when they intersect with one another.

The first and last coordinate pairs in a link correspond exactly with the end coordinates of the adjoining link(s).

Links may comprise up to several thousand line segments.

Coordinate system

The coordinate system is National Grid (NG). The National Grid coordinates are to a resolution of 0.1 metre. This is the resolution of the source data.

Shapefile table structures

Regions			Polylines		
Title		Type	Title		Type
FID*		Object ID	FID*		Object ID
SHAPE*		Geometry	SHAPE*		Geometry
NAME		Text	CODE		Text
AREA_CODE		Text	DESCRIPTO		Text
DESCRIPTO		Text	FILE_NAME		Text
FILE_NAME		Text	NUMBER		Double
NUMBER		Double	LINK_ID		Double
NUMBER0		Double			
POLYGON-ID		Double			
UNIT_ID		Double			
CODE		Text			
HECTARES		Double			
AREA		Double			
TYPE_CODE		Text			
DESCRIPT0		Text			
TYPE_COD0		Text			
DESCRIPT1		Text			

*NOTE: *These fields are not in the data as they are virtual columns created by ArcGIS when accessing the table contents. The FID column uniquely identifies each object stored in the table. The SHAPE column provides information about the feature geometry.*

'Effective' Westminster (Parliamentary) Constituency boundaries

shapefile (Oct 2007)

These boundaries will have the following table structure;

Regions		
Title		Type
NAME		Text

Example field record for shapefile: County

FID*	248
SHAPE*	Polygon
NAME	Bedfordshire County
AREA_CODE	CTY
DESCRIPTO	County
FILE_NAME	BEDFORDSHIRE_COUNTY
NUMBER	17
NUMBER0	476
POLYGON-ID	40935
UNIT_ID	1158
CODE	09
HECTARES	119207.686
AREA	0
TYPE_CODE	AA
DESCRIPT0	CIVIL ADMINISTRATION AREA
TYPE_COD0	
DESCRIPT1	

Example field record for shapefile: Mean high water

FID*	0
SHAPE*	Polyline
CODE	0071
DESCRIPTO	High
FILE_NAME	CHESHIRE_COUNTY
NUMBER	1348
LINK_ID	60283

*NOTE: *These fields are not in the data as they are virtual columns created by ArcGIS when accessing the table contents. The FID column uniquely identifies each object stored in the table. The SHAPE column provides information about the feature geometry.*

File names for layered shapefile

England

County_region (Inc GLAs)
county_electoral_division_region
district_borough_unitary_region
district_borough_unitary_ward-region
european_region-region
greater_london_const_region
high_water_polyline
parish_region
unitary_electoral_division_region
westminster_const_region

Scotland

district_borough_unitary_region
district_borough_unitary_ward_region
european_region_region
high_water_polyline
parish_region
scotland_and_wales_const_region
scotland_and_wales_region_region
westminster_const_region

Wales

district_borough_unitary_region
european_region_region
high_water_polyline
parish_region
scotland_and_wales_const_region
scotland_and_wales_region_region
unitary_electoral_division_region
westminster_const_region

Directory names for nested shapefile

England

County
European_Region
London Administration
Metropolitan_District
Unitary_Authority
Westminster_Constituency

Scotland

European_Region
Scottish_Parliamentary_Electoral_Region
Unitary_Authority
Westminster_Constituency

Wales

European_Region
Unitary_Authority
Welsh_Assembly_Electoral_Region
Westminster_Constituency

See chapter 3, [Relationships of administrative areas](#) for a hierarchical relationship of the boundaries contained within these files and directories.

Chapter 4 NTF explained

For convenience, BS 7567 (National Transfer Format v2.0) Level 3 is referred to as NTF.

The purpose of this document is to:

- provide a brief description of the presentation of Boundary-Line in the NTF transfer format; and
- provide details to enable Boundary-Line files in NTF to be understood and processed in GIS application software.

The term data structure refers to the organisation and sequence of the records in the data file and not to the geographical topology of the data.

An overview of Boundary-Line in NTF

Boundary-Line data is supplied in the British Standard national format namely NTF, and is transferred in level 3 as variable-length records.

The British Standard for NTF stipulates the following for level 3: This level supports a variety of data models that may include network data, polygons, semantic relationships and complex features.

This level is designed for:

- transferring basic geometry and simple features through the use of geometry and feature records;
- relating basic geometrical and topological elements to one or more features through the use of chain records;
- combining features to form complex features through the use of collection and complex polygon records;
- using text records both to relate text strings to features and cartographic output; and
- referencing and positioning external features, for example, raster data; the record structure at this level may also be defined to be compatible with data in levels 1 and 2.

The governing body for the industry standard NTF is the British Standards Institution (BSI). Their address is:

British Standards Institution
389 Chiswick High Road
London
W4 4AL

Tel: +44 (0) 20 8996 9001 Fax: +44 (0) 20 8996 7001

NOTE: Full details of the British Standard can be accessed through the British Standards Institution's web site at: www.bsi-global.com.

Conventions used in this technical specification

Certain conventions are adopted as an aid to interpretation. In some cases the convention is dropped where the context is self-evident.

- [] Square brackets are placed around record names, for example, [VOLHDREC].
- { } Curly brackets denote field names, for example, {REC_DESC} is the Record Descriptor field.
- []90 A two-digit number following square brackets denotes the Record Descriptor which uniquely identifies the record name between the brackets.
- <S> This represents the space character (ASCII code 32).
- <3S> This denotes three successive space characters.
- % This is the percentage character (ASCII code 37).

Version management

Product version

Each version of Boundary-Line is defined by a unique product specification. The product specification can be found in Boundary-Line data in the {FCNAME} field of the Database Header Record [DBHREC]. This Technical Sheet reflects the product specifications current at the time of its production, which are as follows:

Product: **Boundary-Line**
Product specification: **A20N_FC**
Product version date: **May 2008**
Product version: **BL2008 v1**

The {FCDATE} field of the [Database Header Record](#) [DBHREC] indicates the effective date of this product specification.

Product release

Boundary-Line updates are released twice a year, spring and autumn. The updates represent boundaries (as defined and modified by Orders, Acts and Statutory Instruments) as at a date that falls, typically, during the first week of the preceding May. This date appears in each [Section Header Record](#) [SECHREC] in the {SURV_DATE} field.

The copyright date of each release is the same as the {SURV_DATE} and is shown in each Section Header Record [SECHREC] in the {COPYRIGHT} field.

NTF version

The current version is NTF v2.0 Level 3 and will be supplied until further notice. The {NTFVER} field of the [Volume Header Record](#) [VOLHDREC] indicates the NTF version. The effective date of the definition of NTF v2.0 in Boundary Line is 15 May 1992 and is indicated by the {DDATE} field of the [Database Header Record](#) [DBHREC].

Specific Boundary-Line NTF Information

Area measurement

Area measurements are delivered for each polygon and complex polygon in each file, and include the foreshore and tidal water. They are quoted to a precision of 0.001 ha, which is the current DCLG specification. The accuracy of the measurement is dependent upon the source data used (see [Resolution](#)).

Coordinates

Coordinate values and the number of coordinate pairs in a feature are transferred in the [Geometry Record](#) [GEOMETRY1].

All coordinates are expressed as strings of eight numeric characters for the eastings and eight numeric characters for the northings. Where appropriate, leading zeros are present to complete the eight characters.

All coordinates are full National Grid coordinates measured from the National Grid origin.

Link features

Links represent all linear features; that is boundaries, [extent of the realm](#) and [mean high water \(springs\)](#) mark.

Link features are transferred in the [Geometry Record](#) [GEOMETRY1].

All links are broken when they intersect with one another.

The first and last coordinate pairs in a link correspond exactly with the end coordinates of the adjoining link(s).

Links may comprise up to several thousand line segments.

Names

The distinctive name of an administrative area is conveyed by way of the NM attribute of the Collection of Features record. Punctuation is shown in names but not accentuation, for example, the name Westward Ho! Ward includes the exclamation mark, but Ynys Môn is shown as Ynys Mon. Each administrative area also carries a unique identifier known as the [Admin area identifier](#) or AI. The same AI attribute is attached to every component forming part of an administrative area, for example, MILTON CP and MILTON CP (Det No1).

Census agency codes

See chapter 3 of the user guide, [Boundary-Line explained](#). These codes are conveyed in the [OP attribute](#) of the [Collection of Features Record \[COLLECT\]](#).

Record size

NTF data is written to the media in variable length records, with a maximum record length of 80 characters, which includes any continuation mark {CONT_MARK} and end of record {EOR} (which should not to be confused with EOR meaning extent of the realm).

Record terminator {EOR}

The end of record terminator is the percent character (%) (ASCII code 37) for both formatted and unformatted media.

Other features

Each polygon carries the following attributes:

- PI polygon ID, a number unique to the polygon, for example, 070087; and
- HA area of polygon, recorded to a precision of 0.001 hectare.

Each link carries the following attributes where relevant:

- LK link ID, a number unique to the link, for example, 0000064368; and
- FC selected links carry feature code 0071 for MHW.

Each administrative area (collection of polygon features) carries the following attributes where relevant:

- AI administrative unit ID – a number unique to the administrative unit, for example, 024431;
- NM distinctive name of administrative unit – for example, Hampshire County;
- OP census agency code (provided by the Office of National Statistics (England and Wales) and the General Register Office for Scotland) where available (county, district, unitary authority, ward and some electoral divisions only) (see chapter 3 [Boundary-Line explained](#) for a full explanation);
- TY the type of the non-area – for example, VA meaning voting area.
- AC code indicating the type of area, for example, CPC meaning civil parish or community;
- NB selected areas have this code to indicate a non-area is coincident with this area;
- NA coastal areas carry the area of non-land that constitutes this area

Unique identifiers for administrative unit

ADMIN_AREA_ID (AI)

Each administrative unit carries a unique identifier AI; this is the same identifier that was supplied in the previous specification of [Boundary-Line](#). The same AI attribute is associated with every component polygon forming part of an administrative unit, irrespective of the number of polygons.

The same AI attribute is also associated with every component administration forming part of an administrative unit, even if the administration carries different name attributes (NM), for example, MILTON CP and MILTON CP (Det No 1).

GLOBAL_LINK_ID (LK)

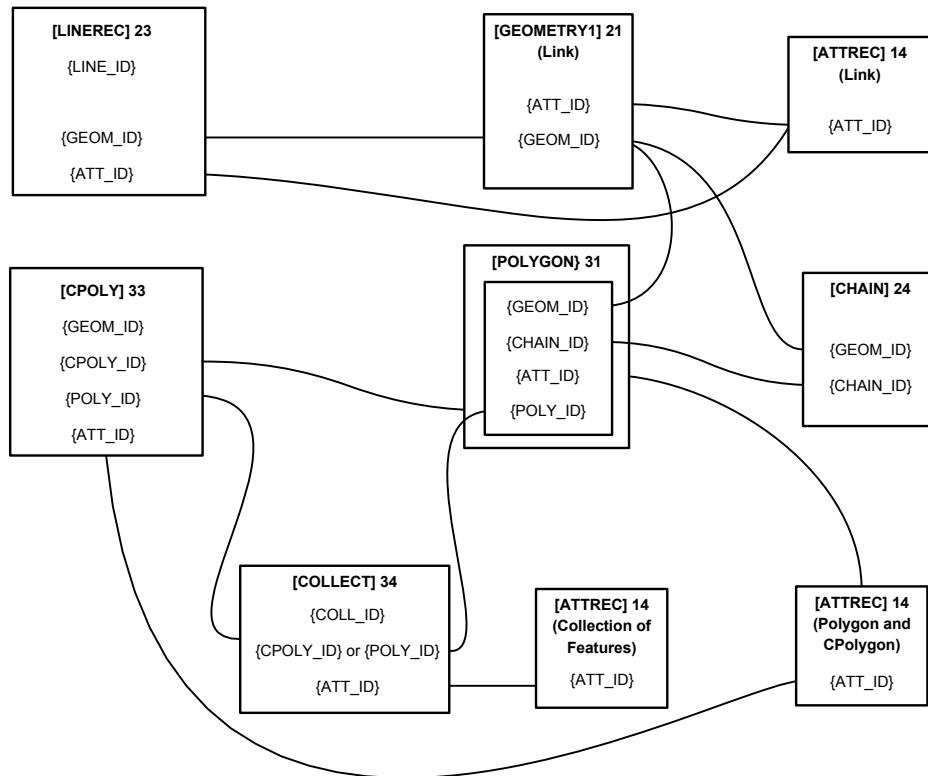
Each link carries a unique identifier LK. This is the same identifier that was supplied in the previous specification of Boundary-Line.

GLOBAL_POLYGON_ID (PI)

Each polygon carries a unique identifier PI. This is generally the same identifier that was supplied in the previous specification of Boundary-Line.

Relationships between record IDs

Figure 5.1: Relationships between record IDs



Additional relationships between record IDs

The same ID number is used wherever there is a one-to-one relationship between different types of records. Thus:

{COLL_ID}={ATT_ID} (for collection of features)

The {COLL_ID} is found in the [Collection of Features Record](#).

The {ATT_ID} is found in the [Attribute Record](#) (for collection of features).

{CPOLY_ID}={ATT_ID} (for complex polygon)

The {CPOLY_ID} is found in the [Complex Polygon Record](#) and the [Collection of Features Record](#).

The {ATT_ID} is found in the [Attribute Record](#) (for CPOLY).

{POLY_ID}={CHAIN_ID}={ATT_ID} (for polygon)

The {POLY_ID} is found in the [Polygon Record](#) and the [Collection of Features Record](#).

The {CHAIN_ID} is found in the [Polygon Record](#).

The {ATT_ID} is found in the [Attribute Record](#) (for polygon).

{LINE_ID}={GEOM_ID}={ATT_ID} (for links)

The {LINE_ID} is found in the [Line Record](#).

The {GEOM_ID} is found in the [Geometry Record](#) and the [Chain Record](#).

The {ATT_ID} is found in the [Attribute Record](#) (for link).

Tidal and other coastal information

See also [mean high water \(springs\)](#) and [mean low water \(springs\)](#) in chapter 3 of the Boundary-Line user guide.

EOR: The external bounding line of the Boundary-Line dataset is the extent of the realm.

NOTE: To display the EOR both mean high water (MHW) and another type of boundary, for example, European electoral region or Westminster constituency, need to be displayed together

MHW: Mean high water (springs) mark is shown as continuous lines within each delivered dataset. The lines do not interact with the administrative area lines. Mean high water (springs) mark is represented in Boundary-Line by a continuous link feature with feature code 0071. Mean low water (springs) mark is not shown, although it is generally coincident with the EOR.

The area of non-inland is referenced within each administrative unit using the NA attribute.

Complex polygons

Administrative units wholly surrounding others of the same type are examples of polygons with holes in them. These are known as complex polygons.

The [Complex Polygon Records](#) [CPOLY] establish the connection between the single containing polygon, and the contained polygons.

The Complex Polygon Record [CPOLY] are referenced by the [Collection of Features Record](#) [COLLECT] for the administrative area of which they are part. They also have an [Attribute Record](#) [ATTREC] (for [polygon](#) and [collection of features](#)) and a [Geometry Record](#) [GEOMETRY1] (for polygons).

The polygons associated with a Complex Polygon Record [CPOLY] do not have any geometry or attributes, but the containing polygon is held explicitly.

Data classification and metadata

Attribute codes

Attribute codes provide supplementary information on a feature, providing such qualifying information as feature code, feature name, and so on. See also [Other attributes](#) in chapter 2, Overview of Boundary-Line of the user guide.

The structure of the attributes is described in the [Attribute Description Record](#) [ATTDESC]. The [Attribute Record](#) [ATTREC] holds the attribute detail of a record.

The following attributes are used in the supply of Boundary-Line data:

Mnemonic	Name	Description
AI	ADMIN_AREA_ID	Unique identifier for administrative unit.
AC	AREA_CODE	Coded value for the area.
FC	FEAT_CODE	Feature code for selected links.
HA	HECTARES	Area of polygon within file.
LK	GLOBAL_LINK_ID	Unique identifier for a link.
NA	NON_INLAND_AREA	Area of non-inland within an administrative area.
NM	NAME	Distinctive name of administrative unit.
NB	NON_TYPE_CODE	Coded value of matching non-area.
OP	CENSUS_CODE	Code allocated by ONS or GROS to administrative unit.
PI	GLOBAL_POLYGON_ID	Unique identifier for a polygon.
TY	AREA_TYPE	Value indicating the type of administrative unit or area.

AI ADMIN_AREA_ID

This attribute is conveyed in the [Attribute Record for collection of features](#) and is a unique identifier for each administrative unit. Each AI attribute is unique to the entire Boundary-Line dataset and is retained through successive updates.

AC AREA_CODE

A code allocated by the Ordnance Survey to indicate the administrative or voting area type. This is allocated to all administrative or voting areas. The current values are given below and also include codes for future areas.

NOTE: This list should be treated as dynamic as other types of boundaries may be added in the future.

Name	Code
Civil parish or community	CPC
County	CTY
County electoral division	CED
District	DIS
District ward	DIW
European region	EUR
Greater London Authority	GLA
Greater London Authority Assembly constituency	LAC
London borough	LBO
London borough ward	LBW
Metropolitan county	MTC
Metropolitan district	MTD
Metropolitan district ward	MTW
Nation	NAT
Non-civil parish or community	NCP
Realm	RLM
Scottish Parliament constituency	SPC
Scottish Parliament electoral region	SPE
Sea	SEA
Unitary authority	UTA
Unitary authority ward	UTW
Unitary authority electoral division	UTE
Welsh Assembly constituency	WAC
Welsh Assembly electoral region	WAE
Westminster constituency	WMC

FC FEAT_CODE

The use of feature codes is reduced significantly. With this specification they will only be used to define non-standard link features. The mean high water tide lines will have the code 0071. The CD/TY attributes together with the [\[COLLECT\]](#) list will take over from the polygon seed feature codes. The boundary links will have implied codes through their roles in the various polygon [\[CHAIN\]](#) records.

HA HECTARES

The area of the polygon quoted to a precision of 0.001 ha, but subject to the source data accuracies. See [Resolution](#).

LK GLOBAL_LINK_ID

A unique identifier for each link. Each LK attribute is unique to the entire Boundary-Line dataset and is retained through successive updates.

NA NON_INLAND_AREA

The area of the administrative unit that is currently defined as non-inland. This will include foreshore and tidal water. The value is quoted to a precision of 0.001 ha.

NM NAME

This attribute is conveyed in the Attribute record for collection of features and contains the distinctive name of the administrative unit, for example LISS CP. The name will always include the type of the area in the text string, for example, HAMPSHIRE COUNTY rather than HAMPSHIRE. Exceptions to this rule include County of Hertfordshire, which is a unitary authority, and The Isles of Scilly, which is classified as a county for the purposes of Boundary-Line. The addition of -(B) at the end of the NAME is to identify the presence of boroughs without affecting the data structure.

NB NON_TYPE_CODE

A code allocated by the Ordnance Survey to indicate the non-administrative or non-voting area type that is defined by the corresponding administrative or voting area's polygon. The current values are as follows:

Name	Code
Civil parish or community	CPC
County	CTY
County electoral division	CED
Unitary authority electoral division	UTE
Unitary authority ward	UTW

OP CENSUS_CODE

This attribute is conveyed in the Attribute record for the collection of features and provides the code allocated by ONS or GROS to the administrative unit. See user guide [chapter 3, Boundary-Line explained](#) in the user guide for details of the structure and meaning of the codes. Where the code is unavailable to Ordnance Survey, the attribute value is set to 999999.

PI GLOBAL_POLYGON_ID

A unique identifier for every polygon. Each PI attribute is unique to the entire Boundary-Line dataset and is generally retained through successive updates of Boundary-Line.

TY AREA_TYPE

A code allocated by Ordnance Survey to indicate the type of area. The current values are as follows:

Name	Type	Description
Civil administrative area	AA	Applied to the set of administrations for civil organisation
Civil voting area	VA	The set of voting areas for civil administrations
Filler area	FA	
Topographic area	TA	
Judicial area	JA	

Explicit administration and/or voting area relationships

The [\[COLLECT\]](#) record has been expanded to show the relationships between administrations and the administrations voting areas explicitly. The rules applied are as follows:

- For each county named in the file, the following will appear in the [\[COLLECT\]](#) record:
 - {COLL_ID} to its related districts; and
 - {COLL_ID} to its related county EDs.
- For each district named in the file, the following will appear in the [\[COLLECT\]](#) record:
 - {COLL_ID} to its related district wards;
 - {COLL_ID} to its related civil parishes or communities (where present); and
 - {COLL_ID} to its related non-civil parishes (where present).
- For each unitary authority named in the file, the following will appear in the [\[COLLECT\]](#) record:
 - {COLL_ID} to its related unitary authority wards or unitary authority EDs;
 - {COLL_ID} to its related civil parishes or communities (where present); and
 - {COLL_ID} to its related non-civil parishes or communities (where present)

- For each metropolitan district named in the file, the following will appear in the [COLLECT] record:
 {COLL_ID} to its related metropolitan district wards;
 {COLL_ID} to its related civil parishes (where present); and
 {COLL_ID} to its related non-civil parishes (where present).
- For the Greater London Authority, the following will appear in the [COLLECT] record:
 {COLL_ID} to all the Greater London Authority Assembly constituencies; and
 {COLL_ID} to all the London boroughs (including the City and County of London).
- For each London borough named in the file, the following will appear in the [COLLECT] record:
 {COLL_ID} to its related London borough wards.
- For each Scottish parliamentary electoral region named in the file, the following will appear in [COLLECT]:
 {COLL_ID} to its related Scottish parliamentary constituencies.
- For each Welsh Assembly electoral region named in the file, the following will appear in the [COLLECT] record:
 {COLL_ID} to its related Welsh Assembly constituencies.
- For each European region named in the file, the following will appear in the [COLLECT] record:
 None – there is currently no administrative voting level below European region.
- For each Westminster constituency named in the file, the following will appear in the [COLLECT] record:
 None – there is currently no administrative voting level below Westminster constituency.

Transfer set structure

Boundary-Line data is in one or more transfer sets.

A transfer set equates to a single file.

Volume records

Each transfer set starts with a [Volume Header Record](#) [VOLHDREC] and terminates with a [Volume Termination Record](#) [VOLTERM].

Database records

The beginning of each transfer set is structured with the following introductory, or leading, records:

- 1 [Database Header Record](#) [DBHREC], which gives details of:
 - the database name;
 - NTF release date;
 - feature classification table name; and
 - the release date which applies to the whole of the transfer set.
- 2 [Attribute Description Record](#) [ATTDESC], which lists and gives a description of the attributes that can be applied to features within the transfer set.
- 3 [Feature Classification Record](#) [FEATCLASS], which gives the MHW feature code.
- 4 [Code List Record](#) [CODELIST], which lists and describes the coded values that appear in the attribute records AC, NB and TY.

These introductory records are followed by the data.

Section records

The section consists of two parts:

- 1 [Section Header Record](#) [SECHREC] – this gives the National Grid coordinates of the section; and
- 2 section body – this comprises all the features within the section.

Section body data

Line feature

Each line feature is represented by the use of the following records:

- [Line Record](#) [LINE_REC];
- [Geometry Record](#) [GEOMETRY1]; and
- [Attribute Record](#) [ATTREC].

Chain feature

Each chain feature is represented by the use of the following records:

- [Chain Record](#) [CHAIN];
- [Geometry Record](#) [GEOMETRY1]; and
- [Attribute Record](#) [ATTREC].

Each chain feature is in the data only once. One-to-many geometry records represent one chain record. There is one attribute record to each geometry record.

Polygon feature

Each polygon feature is represented by the use of the following records:

- [Polygon Record](#) [POLYGON];
- [Chain Record](#) [CHAIN]; and
- [Attribute Record](#) [ATTREC].

Each polygon feature is in the data only once. One polygon record represents one chain record. There is one attribute record to each polygon record.

NOTE: If the polygon record is part of a complex polygon record, then the polygon record does not reference an attribute record.

Complex polygon feature

Each complex polygon feature is depicted by the use of the following records:

- [Complex Polygon Record](#) [CPOLY];
- [Polygon Record](#) [POLYGON]; and
- [Attribute Record](#) [ATTREC].

Each complex polygon feature is in the data only once. More than one polygon record is required for each complex polygon record. There is one attribute record to each complex polygon record.

Collection of features

Each collection of features is depicted by the use of the following records:

- [Collect Record](#) [COLLECT];
- [Polygon Record](#) (either and) [POLYGON];
- [Complex Polygon Record](#) (either) [CPOLY];
- [Collect Record](#) (optional) [COLLECT]; and
- [Attribute Record](#) [ATTREC].

The collection of features must have at least one polygon record or complex polygon record.

A collect record is a combination of zero to many polygon records and/or zero to many complex polygon records and zero to many collect records. There is one attribute record to each collect record.

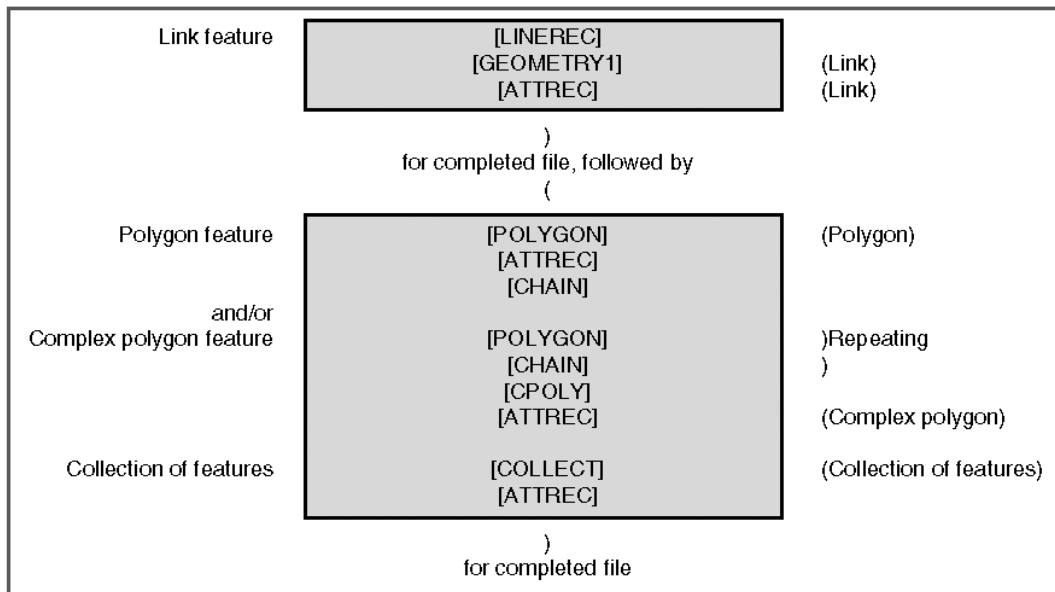
Section body records

Geometry Record [GEOMETRY1] contains the coordinate position(s), to 0.1 m of the feature. Line features contain two to-many pairs.

Geometry continuation records contain any further coordinates required to complete a line feature.

How the section body data is arranged

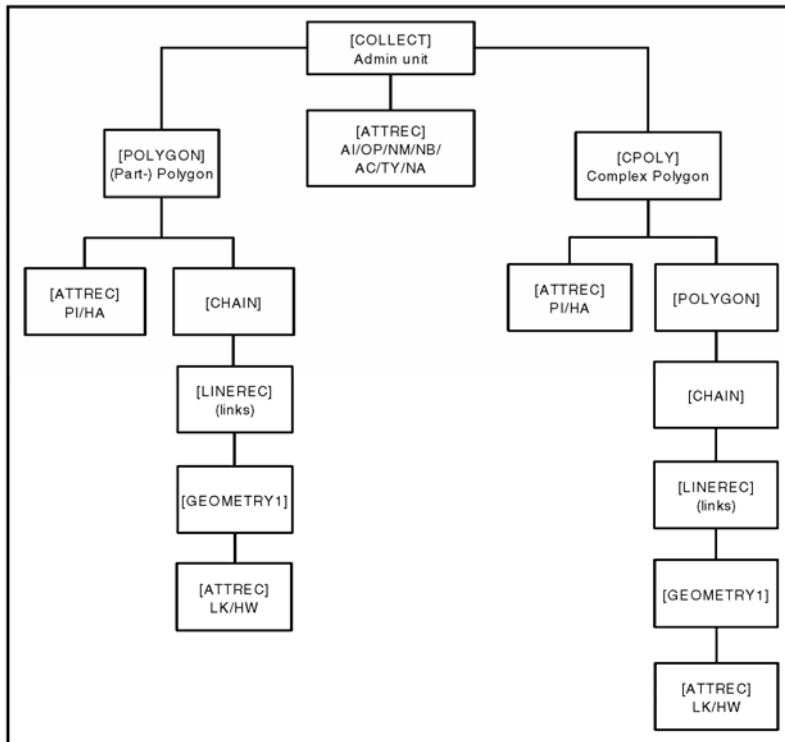
NOTE: NTF is designed to transfer any geographic data, therefore there is no standard order of records. This description of the order of records is specifically for the transfer of Boundary-Line data.



Section body record structure

Complex polygon records are included only to deal with polygons with holes, as described elsewhere. Otherwise, all records are compulsory for all transfers.

Figure 5.2: Hierarchy of records



Data supply structure

Supply of data on formatted media

Boundary-Line data is not blocked but is written directly to the output device.

The transfer set has one dataset and one section. One or more transfer sets are put onto the medium.

01	VOLUME HEADER RECORD	01
02	DATABASE HEADER RECORD	
40	ATTRIBUTE DESCRIPTION RECORD FEATURE CLASSIFICATION RECORD	
05		
07	SECTION HEADER RECORD	
File 1 data		
99	VOLUME TERMINATION RECORD	*
01	VOLUME HEADER RECORD	01
02	DATABASE HEADER RECORD	
40	ATTRIBUTE DESCRIPTION RECORD FEATURE CLASSIFICATION RECORD	
05		
07	SECTION HEADER RECORD	
File 2 data		
99	VOLUME TERMINATION RECORD	*
and so on		
File n data		
99	VOLUME TERMINATION RECORD	*

*'99End Of Transfer Set0%'

Chapter 5 Record structures for the transfer of Boundary-Line in NTF

NTF record list

This list comprises the valid record types used in the Boundary-Line NTF transfer set.

Descriptor	Description	Record name
01	Volume Header Record – defines the donor and data type	[VOLHDREC]
02	Database Header Record – transfers data about the database	[DBHREC]
05	Feature Classification Record – defines data classifications	[FEATCLASS]
07	Section Header Record – coordinate and structure types, unit, scale factors and so on	[SECHREC]
14	Attribute Record – defines the attributes for link, name and polygon records	[ATTREC]
21	Two-dimensional Geometry Record – defines the two-dimensional geometry for a link	[GEOMETRY1]
23	Line Record – defines all of the line information. This is included for compatibility with other products	[LINEREC]
24	Chain Record – data about links forming polygons	[CHAIN]
31	Polygon Record – data about polygons	[POLYGON]
33	Complex Polygon Record – data about complex polygons	[CPOLY]
34	Collection of Features Record – data on how polygons and collections are associated	[COLLECT]
40	Attribute Description Record – defines attribute descriptions and their fields	[ATTDESC]
42	Code List Record – describes the coded values that appear in attribute fields	[CODELIST]
99	Volume Termination Record – defines the end of the transfer set	[VOLTERM]

[Complex Polygon Record](#) [CPOLY] are only included to deal with polygons with holes, as described in chapter 2 of the user guide, [Overview of Boundary-Line](#), otherwise, all records are compulsory for all transfers.

Volume Header Record [VOLHDREC] 01

Field	Position	Format	Content	Description
REC_DESC	01:02	A2	01	Record descriptor
DONOR	03:22	A20	ORDNANCE SURVEY<5S>	Supplier
RECIPIENT	23:42	A20	<20S>	Not used
TRANDATE	43:50	D8	20040219	Date of creation of the transfer set
SERIAL	51:54	I4	0000	Not used
VOLNUM	55:56	I2	See note 1 below	Volume sequential number
NTFLEVEL	57:57	I1	3	NTF Level 3
NTFVER	58:61	R4,2	0200	NTF version 2.0
NTFOR	62:62	A1	V	Variable length records
EOR	63:63	A1	%	Character used for EOR on unformatted media
			or <S>	If default, then EOR is % for formatted media
DIVIDER	64:64	A1	\	Divider used to terminate variable length text fields
CONT_MARK	65:65	I1	0	No further records
EOR	66:66	A1	%	Record terminator

Record example:

```
01ORDNANCE SURVEY                2004021900000130200V \0%
....|....1....|....2....|....3....|....4....|....5....|....6....|....7....|....8
12345678901234567890123456789012345678901234567890123456789012345678901234567890
....|....|....|....|....|....|....|....|....|....|....|....|....|....|....|....|
```

Template

NOTE 1: {VOLNUM} is 01 for the first volume and is incremented for subsequent volumes.

Database Header Record [DBHREC] 02

Field	Position	Format	Content	Description
REC_DESC	01:02	A2	02	Record descriptor
DBNAME	03:22	A20	Boundary-Line<7S>	Product name
DDNAME	23:42	A20	DEFAULT_02.00<7S>	Standard NTF data dictionary name
DDATE	43:50	D8	19920515	Date of standard data dictionary
DDBASE	51:70	A20	<20S>	Not used
DDBDATE	71:78	D8	00000000	Not used
CONT_MARK	79:79	I1	1	Continuation record follows
EOR	80:80	A1	%	Record terminator

Continuation record

Field	Position	Format	Content	Description
REC_DESC	01:02	I2	00	Record descriptor.
FCNAME	03:22	A20	A20N_FC<13s>	Product specification. The name of the feature classification scheme being transferred.
FCDATE	23:30	D8	YYYYMMDD	Product specification date.
DQNAME	31:50	A20	<20S>	Not used.
DQDATE	51:58	D8	00000000	Not used.
DATA_MODEL	59:60	I2	00	Default model is used.
CONT_MARK	61:61	I1	0	No further records.
EOR	62:62	A1	%	Record terminator.

Record examples:

```
02Boundary-Line          DEFAULT_02.00          19920515          000000001%
00A20N_FC                20021001                000000000000%
```

....	1....	2....	3....	4....	5....	6....	7....	8													
1	2	3	4	5	6	7	8	9	0	1	2	3	4	5	6	7	8	9	0	1	2	3	4	5	6	7	8	9	0
....														

Template

Feature Classification Record [FEATCLASS] 05

Field	Position	Format	Content	Description
REC_DESC	01:02	A2	05	Record descriptor.
FEAT_CODE	03:06	I4	0071	Feature code for MHW.
CODE_COM	07:16	A10	<10S>	Not used.
STCLASS	17:36	A20	<20S>	Not used.
FEATDES	*:*	A*	High Water Mark (HWM)	For MHW.
DIVIDER	*:*	A1	\	Divider used to terminate variable length fields.
CONT_MARK	*:*	I1	0	No further records.
EOR	*:*	A1	%	Record terminator.

* = variable integer

Record example:

050071	High Water Mark (HWM)\0%																											
<table border="1"> <tr> <td>....</td><td>....1....</td><td>....2....</td><td>....3....</td><td>....4....</td><td>....5....</td><td>....6....</td><td>....7....</td><td>....8</td> </tr> <tr> <td>123456789012345678901234567890123456789012345678901234567890123456789012345678901234567890</td> <td></td><td></td><td></td><td></td><td></td><td></td><td></td><td></td> </tr> <tr> <td>....</td><td>....</td><td>....</td><td>....</td><td>....</td><td>....</td><td>....</td><td>....</td><td>....</td> </tr> </table>1....2....3....4....5....6....7....8	123456789012345678901234567890123456789012345678901234567890123456789012345678901234567890									Template
....1....2....3....4....5....6....7....8																				
123456789012345678901234567890123456789012345678901234567890123456789012345678901234567890																												
....																				

Section Header Record [SECHREC] 07

Field	Position	Format	Content	Description
REC_DESC	01:02	A2	07	Record descriptor
SECT_REF	03:12	A10	Admin name	Unique identifier of the main administration
COORD_TYP	13:13	I1	2	Defines rectangular coordinates, followed by spaces
STRUC_TYP	14:14	I1	1	Defines vector data
XYLEN	15:19	I5	00008	Refines {X_COORD} and {Y_COORD} to 8 digits
XY_UNIT	20:20	I1	2	Defines units as metres
XY_MULT	21:30	R10.3	000000100	Multiplies coordinates by 0.100
ZLEN	31:35	I5	00000	Not used
Z_UNIT	36:36	I1	0	Not used
Z_MULT	37:46	R10.3	0000001000	Multiplies coordinates by 0.100
X_ORIG	47:56	I10	Coordinates	Eastings of file origin (always 0)
Y_ORIG	57:66	I10	Coordinates	Northings of file origin (always 0)
Z DATUM	67:76	I10	0000000000	Not used
CONT_MARK	77:77	I1	1	Continuation record follows
EOR	78:78	A1	%	Record terminator

NOTE 1: The {SECT_REF} field will comprise the first 10 characters of the main administration.

Continuation record

Field	Position	Format	Content	Description
REC_DESC	01:02	A2	00	Record descriptor
XMIN	03:12	I10	The smallest X value in file	Relative limits of file in metres (see note 1 below)
YMIN	13:22	I10	The smallest Y value in file	Relative limits of file in metres (see note 1 below)
XMAX	23:32	I10	The largest X value in file	Relative limits of file in metres (see note 1 below)
YMAX	33:42	I10	The largest Y value in file	Relative limits of file in metres (see note 1 below)
XY_ACC	43:47	R5,2	00000	Not used
Z_ACC	48:52	R5,2	00000	Not used
SURV_DATE	53:60	D8	YYYYMMDD	Date of the annual snapshot of boundaries represented by the annual product release
LAST_AMND	61:68	D8	00000000	Not used
COPYRIGHT	69:76	D8	YYYYMMDD	Copyright date for the annual product release
CONT_MARK	77:77	I1	0	No further records
EOR	78:78	A1	%	Record terminator

Record examples:

07CHESHIRE.C210000820000000100000000000001000000000000000000000000000000000000001%
00000032487900003389940000401780000038792900000000002000050400000000200005040%

.... ...1.... ...2.... ...3.... ...4.... ...5.... ...6.... ...7.... ...8
12345678901234567890123456789012345678901234567890123456789012345678901234567890
....

Template

NOTE 1: {XMIN}, {YMIN}, {XMAX} and {YMAX} values are calculated from a geometric square enclosing the delivery set. In some cases this may mean that {XMIN} has a negative value.

Attribute Record [ATTREC] 14 for Line Record [LINEREC] 23

Field	Position	Format	Content	Description
REC_DESC	01:02	A2	14	Record descriptor
ATT_ID	03:08	I6	Variable number	Unique ID in file. Cross reference to {ATT_ID} in Geometry record
VAL_TYPE	09:10	A2	LK	Mnemonic for GLOBAL_LINK_ID attribute
VALUE	11:20	I10	See note 1	Unique identifier for link
VAL_TYPE	21:22	A2	FC (see note 3 below)	Mnemonic for FEAT_CODE attribute (optional)
VALUE	23:26	I4	See notes 2 and 3 below	Feature code (optional)
CONT_MARK	27:27	11	0	No further records
EOR	28:28	A1	%	Record terminator

Record example:

```
14800044LK0000000000FC00710%
14800045LK00001509600%
```

.....1.....2.....3.....4.....5.....6.....7.....8
1234567890	1234567890	1234567890	1234567890	1234567890	1234567890	1234567890	1234567890	1234567890
.....

Template

NOTE 1: Valid {VALUE} for LK range is 0000040000 to 9999999999.

NOTE 2: Valid {VALUE} for FC range is 0071.

NOTE 3: Where optional fields are not present, {CONT_MARK} and {EOR} fields will be in positions 21 and 22.

Attribute Record [ATTREC] 14 for Collection of Features Record [COLLECT] 34

Field	Position	Format	Content	Description
REC_DESC	01:02	A2	14	Record descriptor
ATT_ID	03:08	I6	Variable number	Unique in file. Cross reference to {ATT_ID} in Collect Record
VAL_TYPE	09:10	A2	AI	Mnemonic for ADMIN_AREA_ID attribute
VALUE	11:16	I6	See note 1 below	Unique in dataset number which is the Admin area ID; 000000 for non-areas
VAL_TYPE	17:18	A2	NA	Mnemonic for NON_INLAND_AREA
VALUE	19:30	R12,3	Variable number	Area of non-land
VAL_TYPE	31:32	A2	OP	Mnemonic for CENSUS_CODE attribute
VALUE	33:39	A7	CC(<5S>) or CCDD(<3S>) or CCDDWW(<S>) or CCDDPAR or 00UA(<3S>) or 00UAWW(<1S>) or 00UAPAR or 999999(<S>) or <7S>	County census agency code . See note 2 below District census agency code. See note 2 below ED and/or ward census agency code (in district). See note 2 below Parish census agency code. See note 2 below Unitary census agency code. See note 2 below Ward census agency code (in unitary area). See note 2 below Parish or community census agency code(in unitary area).See note 2 below Census agency code unavailable to Ordnance Survey No census agency code allocated
VAL_TYPE	40:41	A2	TY	Type of admin area or voting area (AA or VA), or FA for non-area or TA for sea
VALUE	42:43	A2		See note 5 below
VAL_TYPE	44:45	A2	AC	Code of admin area or voting area
VALUE	46:48	A3		See note 6 below
VAL_TYPE	49:50	A2	NM	Mnemonic for NAME attribute. See note 7 below
VALUE	51:*	A*	See note 3 below	Admin area name or sea
DIVIDER	*:*	A1	\	Divider used to terminate variable length text fields
VAL_TYPE	*:*	A2	NB	Mnemonic for NON_TYPE_CODE (optional)
VALUE	*:*	A3	See note 4 below	Code for the non-type that exactly matches this area
CONT_MARK	*:*	I1	0 or 1	No further records or continuation record follows
EOR	*:*	A1	%	Record terminator

*= variable integer.

Record examples:

```
14002553AI012343NA000024521862OP13 TYAAACCTY NMCHESHIRE COUNTY\0%
14001588AI016261NA000002482386OP45UH TYAAACDISNMWORTHING DISTRICT\NBCPC0%
14000183AI025588NA000008998298OPEE TYAAACUTANMREDCAR AND CLEVELAND\NBUTENB1%
00CTY0%
```

....1....2....3....4....5....6....7....8
12345678901234567890123456789012345678901234567890123456789012345678901234567890								
....

Template

NOTE 1: Valid {VALUE} for AI range is 000000 to 999999.

NOTE 2: CC represents a two-digit county code element; DD, WW and UA represent two-letter code elements for district, ward and unitary authority, respectively. See [census agency codes](#) in chapter 3 of the Boundary-Line user guide.

NOTE 3: Continuation Record(s) [CONTREC] commence with the record descriptor 00.

NOTE 4:

Civil parish or community	CPC
County	CTY
County electoral division	CED
Unitary authority electoral division	UTE
Unitary authority ward	UTW

NOTE 5:

Civil administrative area	AA
Civil voting area	VA
Topographic area	TA
Judicial area	JA
Filler area	FA

NOTE 6:

England

Description	AC	TY
Civil parish or community	CPC	AA
County	CTY	AA
County electoral division	CED	VA
District	DIS	AA
District ward	DIW	VA
European region	EUR	VA
Greater London Authority	GLA	AA
Greater London Authority Assembly constituency	LAC	VA
London borough	LBO	AA
London borough ward	LBW	VA
Metropolitan county	MTC	AA
Metropolitan district	MTD	AA
Metropolitan district ward	MTW	VA
Non-civil parish or community	NCP	FA
Unitary authority	UTA	AA
Unitary authority electoral division	UTE	VA
Unitary authority ward	UTW	VA
Westminster constituency	WMC	VA

Wales

Description	AC	TY
Civil parish or community	CPC	AA
European Region	EUR	VA
Non-civil parish or community	NCP	FA
Unitary authority	UTA	AA
Unitary authority electoral division	UTE	VA
Welsh Assembly constituency	WAC	VA
Welsh Assembly electoral region	WAE	AA
Westminster constituency	WMC	VA

Scotland

Description	AC	TY
European region	EUR	VA
Scottish Parliament constituency	SPC	VA
Scottish Parliament electoral region	SPE	AA
Unitary authority	UTA	AA
Unitary authority ward	UTW	VA
Unitary authority electoral division	UTE	VA
Westminster constituency	WMC	VA

NOTE 7: Punctuation is shown in names but not accentuation, for example, the name Westward Ho! Ward includes the exclamation mark, but Ynys Môn is shown as Ynys Mon.

Attribute Record [ATTREC] 14 for Polygon Record [POLYGON] 31 and Complex Polygon Record [CPOLY] 33

Field	Position	Format	Content	Description
REC_DESC	01:02	A2	14	Record descriptor.
ATT_ID	03:08	I6	Variable number	Unique in the file. Cross reference to {ATT_ID} in Polygon Record or Complex Polygon Record.
VAL_TYPE	09:10	A2	PI	Mnemonic for GLOBAL_POLYGON_ID.
VALUE	11:16	I6	See note 1 below	Unique in dataset ID for polygon.
VAL_TYPE	17:18	A2	HA	Mnemonic for HECTARES attribute.
VALUE	19:30	R12,3	Variable number	Area of polygon or complex polygon.
CONT_MARK	31:31	I1	0	No further records.
EOR	32:32	A1	%	Record terminator.

Record example:

14000046PI800046HA0000039468770%

....1....2....3....4....5....6....7....8
123456789012345678901234567890123456789012345678901234567890123456789012345678901234567890								
....

Template

NOTE 1: Valid {VALUE} for PI range is 040000 to 999999.

Geometry Record [GEOMETRY1] 21

Field	Position	Format	Content	Description
REC_DESC	01:02	A2	21	Record descriptor
GEOM_ID	03:08	I6	Variable number	For link, cross reference from {GEOM_ID} in Chain Record
GTYPE	09:09	I1	2	Defines as line geometry – a link
NUM_COORD	10:13	I4	Variable number	Number of coordinate pairs
I X_COORD	14:21	I8	Variable number	Easting offset to 0.1 m
I Y_COORD	22:29	I8	Variable number	Northing offset to 0.1 m
I QPLAN	30:30	A1	<S>	Not used
ATT_ID	*:*	I6	Variable number	For links, cross reference to {ATT_ID} in Attribute Record
CONT_MARK	*:*	I1	0 or 1	No further records or continuation record follows
EOR	*:*	A1	%	Record terminator

* = variable integer

Record examples:

```
210000012000200000000000040009 0000000000000000 0000010%
210000022000200000000000048909 0000000000040009 0000020%
21800002200120000200000050857 0000209600050905 0000235200051086.1%
000000269100051180 0000298200051282 0000343600051455 0000371300051573 1%
000000408800051761 0000429400051866 0000457600052137 0000472600052285 1%
000000492400052503 8000020%
```

....1....2....3....4....5....6....7....8
123456789012345678901234567890123456789012345678901234567890123456789012345678901234567890								
....

Template

NOTE 1: {X_COORD}, {Y_COORD} and {QPLAN} iterate the number of times shown in {NUM_COORD}.

NOTE 2: Continuation Record(s) [CONTREC] commence with the record descriptor 00.

Line Record [LINEREC] 23

Field	Position	Format	Content	Description
REC_DESC	01:02	A2	23	Record descriptor
LINE_ID	03:08	I6	Variable number	Line ID, unique in file
GEOM_ID	09:14	I6	Variable number	Cross reference to {GEOM_ID} in Geometry Record for link
NUM_ATT	15:16	I2	01	The number of attribute identifiers which follow
ATT_ID	17:22	I6	Variable number	Cross reference to {ATT_ID} in Attribute Record
CONT_MARK	23:23	I1	0	No further records
EOR	24:24	A1	%	Record terminator

Record example:

```
23800463800463018004630%
```

....1....2....3....4....5....6....7....8
123456789012345678901234567890123456789012345678901234567890123456789012345678901234567890								
....

Template

NOTE: {LINE_ID}, {GEOM_ID} and {ATT_ID} are the same variable number.

Chain Record [CHAIN] 24

Field	Position	Format	Content	Description
REC_DESC	01:02	A2	24	Record descriptor
CHAIN_ID	03:08	I6	Variable number	Unique in file, ID of Chain. Cross reference to {CHAIN_ID} in Polygon Record
NUM_PARTS	09:12	I4	Variable number	Number of links for polygon within file, {GEOM_ID} and {DIR} iterate this number of times
I GEOM_ID	13:18	I6	Variable number	Cross reference to {GEOM_ID} in Geometry Record for link
I DIR	19:19	I1	1 or 2	Direction start to end or direction end to start
CONT_MARK	*.*	I1	0 or 1	No further records or continuation record follows
EOR	*.*	A1	%	Record terminator

* = variable integer

Record examples:

```
2400007300120000321000012100001110000101000009100003110000591000064100006311%
000000621000060100006110%
```

....1....2....3....4....5....6....7....8
123456789012345678901234567890123456789012345678901234567890123456789012345678901234567890								
....

Template

NOTE: Continuation record(s) [CONTREC] commence with the record descriptor 00.

Polygon Record [POLYGON] 31

Field	Position	Format	Content	Description
REC_DESC	01:02	A2	31	Record descriptor
POLY_ID	03:08	I6	Variable number	Polygon ID, unique in file for administrative unit Reference to {PART_ID} in Collect Record that is preceded by a value of 31 in {REC_DESC}
CHAIN_ID	09:14	I6	Variable number	Unique in file ID for Chain. Cross reference to {CHAIN_ID} in Chain Record
GEOM_ID	15:20	I6	000000	
NUM_ATT	21:22	I2	01	The number of attribute identifiers which follow
ATT_ID	23:28	I6	Variable number	Cross reference to {ATT_ID} in Attribute Record
CONT_MARK	29:29	I1	0	No further records
EOR	30:30	A1	%	Record terminator

Record example:

```
318004638004630000000018004630%
```

....1....2....3....4....5....6....7....8
123456789012345678901234567890123456789012345678901234567890123456789012345678901234567890								
....

Template

NOTE: {POLY_ID}, {CHAIN_ID} and {ATT_ID} are the same variable number.

Complex Polygon Record [CPOLY] 33

Field	Position	Format	Content	Description
REC_DESC	01:02	A2	33	Record descriptor
CPOLY_ID	03:08	I6	Variable number	Unique ID in file for complex polygons. Reference to {PART_ID} in Collect Record that is preceded by a value of 33 in {REC_DESC}
NUM_PARTS	09:12	I4	Variable number	Number of iterations of {POLY_ID} and {SIGN}
I POLY_ID	13:18	I6		Cross reference to {POLY_ID} in Polygon Record
I SIGN	19:19	A1	+ or –	For containing polygons or for contained polygons respectively
GEOM_ID	*:*	I6	000000	
NUM_ATT	*:*	I2	01	The number of attribute identifiers which follow
ATT_ID	*:*	I6	Variable number	Cross reference to {ATT_ID} in Attribute Record
CONT_MARK	*:*	I1	0 or 1	No further records or continuation record follows
EOR	*:*	A1	%	Record terminator

* = variable integer

Record example:

338008840002800614+800865-000000018008840%

....1....2....3....4....5....6....7....8
123456789012345678901234567890123456789012345678901234567890123456789012345678901234567890								
....

Template

NOTE: Continuation record(s) [CONTREC] commence with record descriptor 00.

Collection of Features Record [COLLECT] 34

Field	Position	Format	Content	Description
REC_DESC	01:02	A2	34	Record descriptor
COLL_ID	03:08	I6	Variable number	Unique identifier
NUM_PARTS	09:12	I4	Variable number	Number of iterations of {REC_DESC} and [PART_ID] – that is, the number of polygons comprising an administrative area, together with the number of voting areas
I REC_DESC	13:14	A2	31 or 33 or 34	Polygon; or complex polygon; or collect (for admin area or voting area relationships).
I PART_ID	15:20	I6	Variable number	Cross reference to {POLY_ID} of Polygon Record or {CPOLY_ID} of Complex Polygon Record or the {COLL_ID} of Collect Record
NUM_ATTTS	*:*	I2	01	The number of attribute identifiers which follow
ATT_ID	*:*	I6	Variable number	Cross reference to {ATT_ID} of Attribute Record for collection of features
CONT_MARK	*:*	I1	0 or 1	No further records or continuation record follows
EOR	*:*	A1	%	Record terminator

* = variable integer

Record example:

```
34002973005531001925340029723400297134002970340029693400296834002967340029661%
003400296534002964340029633400288934002888340028673400286634002865340028641%
003400286334002713340027123400271134002710340027093400270834002707340027061%
003400270534002704340027033400270234002701340027003400269934002698340026011%
003400260034002599340025983400259734002596340025953400250534002504340025031%
003400250234002501340025003400249934002455340024543400245334002452340024511%
003400245034002449010029730%
```

....1....2....3....4....5....6....7....8
1234567890	1234567890	1234567890	1234567890	1234567890	1234567890	1234567890	1234567890	1234567890
....

Template

NOTE: Continuation record(s) [CONTREC] commence with the record descriptor 00.

Attribute Description Record [ATTDESC] 40

Field	Position	Format	Content	Description
REC_DESC	01:02	A2	40	Record descriptor
VAL_TYPE	03:04	A2	See table below	Attribute mnemonic
FWIDTH	05:07	A3	See table below	Field width
FINTER	08:12	A5	See table below	Attribute format
ATT_NAME	13:*	A*	See table below	Attribute name. See note 1 below
DIVIDER	*:*	A1	\	Divider used to terminate variable length text fields
CONT_MARK	*:*	I1	0	No further records
EOR	*:*	A1	%	Record terminator

Contents of [ATTDESC]

{VAL_TYPE}	{FWIDTH}	{FINTER}	{ATT_NAME}
AI	006	I6	ADMIN_AREA_ID
FC	004	I4	FEAT_CODE
LK	010	I10	GLOBAL_LINK_ID
NM	<3S>	A*	NAME (see note 1 below)
OP	007	A7	CENSUS_CODE
PI	006	I6	GLOBAL_POLYGON_ID
HA	012	R12,3	HECTARES
AC	003	A3	AREA_CODE
NA	012	R12,3	NON_INLAND_AREA
NB	003	A3	NON_TYPE_CODE
TY	002	A2	AREA_TYPE

* = variable integer

NOTE 1: Punctuation is shown in names but not accentuation, for example, the name Westward Ho! Ward includes the exclamation mark, but Ynys Môn is shown as Ynys Mon.

Record examples:

```

40LK010I10 GLOBAL_LINK_ID\0%
40AI006I6 ADMIN_AREA_ID\0%
40PI006I6 GLOBAL_POLYGON_ID\0%
40NA012R12,3NON_INLAND_AREA\0%
40HA012R12,3HECTARES\0%
40NM A* NAME\0%
40OP006A7 CENSUS_CODE\0%
40TY002A2 AREA_TYPE\0%
40FC004I4 FEAT_CODE\0%
40AC003A3 AREA_CODE\0%
40NB003A3 NON_TYPE_CODE\0%

```

....1....2....3....4....5....6....7....8
123456789012345678901234567890123456789012345678901234567890123456789012345678901234567890								
....

Template

Code List Record [CODELIST] 42

Field	Position	Format	Content	Description
REC_DESC	01:02	A2	42	Record descriptor
FIELD_NAME	03:12	A10	<10S>	Not used
VAL_TYPE	13:14	A2	AC, TY or NB	Two letter mnemonic
FINTER	15:19	A5	A2<3S> or A3<3S>	Format of CODE_VAL, where <3S> denotes three spaces following the text
NUM_CODE	20:22	I3	Variable number	Number of codes defined in list
CODE_VAL	23:*	A*		The code
DIVIDER	*:*	A1	\	Divider used to terminate variable length text fields
CODE_DES	*:*	A*		Description of the code
DIVIDER	*:*	A1	\	Divider used to terminate variable length text fields
CONT_MARK	*:*	I1	0 or 1	No further records or continuation record follows
EOR	*:*	A1	%	Record terminator

* = variable integer

Record examples:

```

42      ACA3      028CPC\CIVIL PARISH OR COMMUNITY\CPW\CIVIL PARISH OR COMMU1%
00NITY WARD\CTY\COUNTY\CED\COUNTY ELECTORAL DIVISION\DIS\DISTRICT\DIW\DISTRICT1%
00T WARD\EUR\EUROPEAN REGION\GLA\GREATER LONDON AUTHORITY\LAC\GREATER LONDON 1%
00AUTHORITY ASSEMBLY CONSTITUENCY\LBO\LONDON BOROUGH\LBW\LONDON BOROUGH WARD\1%
00MTC\METROPOLITAN COUNTY\MTD\METROPOLITAN DISTRICT\MTW\METROPOLITAN DISTRICT1%
00 WARD\NAT\NATION\NCP\NON CIVIL PARISH OR COMMUNITY\NPW\NON CIVIL PARISH OR 1%
00COMMUNITY WARD\PSD\PETTY SESSIONAL DIVISION\RLM\REALM\SPC\SCOTTISH PARLIAME1%
00NT CONSTITUENCY\SPE\SCOTTISH PARLIAMENT ELECTORAL REGION\SEA\SEA\UTA\UNITAR1%
00Y AUTHORITY\UTE\UNITARY AUTHORITY ELECTORAL DIVISION\UTW\UNITARY AUTHORITY 1%
00WARD\WAC\WELSH ASSEMBLY CONSTITUENCY\WAE\WELSH ASSEMBLY ELECTORAL REGION\WM1%
00C\WESTMINSTER CONSTITUENCY\0%
42      TYA2      005AA\CIVIL ADMINISTRATION AREA\VA\CIVIL VOTING AREA\FA\FI1%
00LLER AREA\JA\JUDICIAL AREA\TA\TOPOGRAPHIC AREA\0%
42      NBA3      006CPC\CIVIL PARISH OR COMMUNITY\CPW\CIVIL PARISH OR COMMU1%
00NITY WARD\CTY\COUNTY\CED\COUNTY ELECTORAL DIVISION\UTE\UNITARY AUTHORITY EL1%
00ECTORAL DIVISION\UTW\UNITARY AUTHORITY WARD\0%

```

....1....2....3....4....5....6....7....8
12345678901234567890123456789012345678901234567890123456789012345678901234567890								
....

Template

Volume Termination Record [VOLTERM] 99

Field	Position	Format	Content	Description
REC_DESC	01:02	A2	99	Record descriptor
FREE_TEXT	03:*	A*	See note 1 below	Message
CONT_VOL	*:*	I1	0 or 1	No further volumes or continuation volume follows
EOR	*:*	A1	%	Record terminator

* = variable integer

*NOTE: If there are further volume(s) to follow, the {FREE_TEXT} field contains the following message:
End Of Volume (nn). Transfer Set Continues On Volume (nn+1)*

If there are no further volumes, the {FREE_TEXT} field contains following the message:
End Of Transfer Set

Record examples:

99End Of Volume 01 Transfer. Set Continues On Volume 02 1%

....1....2....3....4....5....6....7....8
123456789012345678901234567890123456789012345678901234567890123456789012345678901234567890								
....

Template

99End Of Transfer Set1%

....1....2....3....4....5....6....7....8
123456789012345678901234567890123456789012345678901234567890123456789012345678901234567890								
....

Template

Annexe A Glossary

absolute coordinates

A coordinate pair or triplet measured directly from the origin of the coordinate system in which it lies and not to any other point in the system.

accuracy

The closeness of the results of observations, computations or estimates to the true values or the values accepted as being true. Accuracy relates to the exactness of the result, and is the exactness of the operation by which the result is obtained.

administrative area

A blanket term used by Ordnance Survey to refer to all public administrative areas, specifically local government management and electoral areas.

administrative unit

A single administrative area.

alphanumeric

Information in character form.

American Standard Code for Information Interchange (ASCII)

A 7-bit code for encoding a standard character set.

area

A spatial extent defined by circumscribing lines that form a closed perimeter that does not intersect itself.

attribute

An attribute is a property of an entity, usually used to refer to a non-spatial qualification of a spatially referenced entity. For example, a name or descriptive code indicating what an entity represents or how it should be portrayed.

attribute class

A specific group of attributes, for example, those describing measure, serviceability, structure or composition.

attribute code

An alphanumeric identifier for an attribute type.

attribute value

A specific quality or quantity assigned to an attribute.

boundary

Boundaries define the areas of the various national, local government and some European authorities.

CAD

Computer-aided design.

centroid

The position of the centre of gravity of an entity – often used to reference polygons.

character

A distinctive mark; an inscribed letter; one of a set of writing symbols.

chain

A closed loop of links bounding a polygon.

character string

A one-dimensional array of characters held either in memory or in another storage medium.

coding

Allocation of a feature code to a feature being created from constituent construction data – points and/or segments; with optional linking to an existing feature of the same feature code.

compact disc – read-only memory (CD-ROM)

A data storage medium. A 12 cm disc read by laser.

coordinate pair

A coordinate pair is an easting and a northing.

coordinates

Pairs of numbers expressing horizontal distances along original axes. Alternatively triplets of numbers measuring horizontal and vertical distances. Row and column numbers of pixels from raw imagery are not considered coordinates for the purpose of the standard.

continuation mark

A logical record may contain more data than can be held in a single physical record. The physical record contains a continuation mark (the penultimate character of the record in NTF) to indicate whether more data is to be found in a continuation record.

continuation record

A specific NTF term. A continuation record is used where space does not allow one logical record to be contained wholly within one physical record.

copyright

Copyright is a legal property right which enables the creator and/or owner of an original work to protect it from unauthorised use. Through the *Copyright, Designs and Patents Act 1988*, Crown copyright continues to subsist in all Ordnance Survey products until the end of the period of 50 years from the end of the year in which they were published, and in the case of data from the end of the year in which it was extracted from the Ordnance Survey database. Crown copyright is vested in The Controller of Her Majesty's Stationery Office, who has delegated powers to the Director General, Ordnance Survey for the administration of copyright in publications and data, including the determination of terms and conditions under which permission for their reproduction is given.

currency

An expression of the up-to-dateness of data.

data

A representation of facts, concepts or instructions in a formalised manner suitable for communication, interpretation or processing.

database

An organised, integrated collection of data stored so as to be capable of use in relevant applications, with the data being accessed by different logical paths. Theoretically it is application-independent, but in practice rarely so.

database (NTF)

A group of one or more sections with common characteristics defined in a data dictionary. Information and data being transferred in a transfer set is deemed to belong to one or more databases. These may be databases in the literal sense, or may be collections of data from a common source, such as a national coverage of large-scale mapping.

data capture

The encoding of data. In the context of digital mapping this includes map digitising, direct recording by electronic survey instruments and the encoding of text and attributes by whatever means.

data format

A specification that defines the order in which data is stored or a description of the way data is held in a file or record.

data model

An abstraction of the real world which incorporates only those properties thought to be relevant to the application or applications at hand. The data model would normally define specific groups of entities and their attributes, and the relationship between these entities. A data model is independent of a computer system and its associated data structures. A map is one example of an analogue data model.

data quality

Attributes of a dataset which define its suitability for a particular purpose, for example, completeness, positional accuracy, currency, logical structure and so on.

dataset

Data as supplied in a particular format to customers, whether internal or external to Ordnance Survey.

data structure

The defined logical arrangement of data as used by a system for data management; a representation of a data model in computer form.

derived map

A map which has been produced by reference to other source maps, rather than directly from a survey.

digital

Data which is expressed as numbers (digits) in computer readable form is said to be digital.

distinctive name

A text feature consisting of text string(s) which form(s) a proper name.

eastings

See [rectangular coordinates](#).

entity

Something about which data is stored in a databank or database. For example, boundary and name. The data may consist of relationships, attributes, positional and shape information and so on. Often synonymous with feature.

explicit

Data that is directly represented in digital form. For example, the relationship between two objects is explicit if recorded by such means as pointers and does not have to be deduced by further analysis of the data.

feature

An item of detail within a map which can be a point and/or symbol, text or line.

feature (NTF)

The formal representation of an object. A simple feature (or primitive) exists in NTF when a point, line, complex line, polygon, text string or external record is created, with or without associated attribute records. A complex feature exists in NTF when a group of simple and/or complex feature records are combined in a complex polygon or collection of features record, with or without associated attribute records.

feature classification record

A specific, named NTF record [FEATCLASS] which lists the feature codes in use in the current database.

feature code (FC)

An alphanumeric attribute code used in digital map data to describe each feature in terms either of the object surveyed or its representation on the map (or both).

feature record

The logical information, both spatial and attribute, describing a feature or entity.

feature serial number (FSN)

A number used as a feature identifier usually allocated on a sequential basis.

field

A specified part of a record containing a unit of data, such as the date of digitising. The unit of data may be a data element or a data item. In NTF a field is a subdivision of a physical record. Every field has a name and a predefined interpretation.

file

An organised collection of related records. The records on a file may be related by a specific purpose, format or data source, and the records may or may not be arranged in sequence. A file may be made up of records, fields, words, bytes, characters or bits.

font

The style of text character used.

format

The specified arrangement of data (for example, the layout of a printed document, or the arrangement of the parts of a computer instruction, or the arrangement of data in a record. A specification that defines the order in which data is stored or a description of the way data is held in a file record.

geographical information system (GIS)

A system for capturing, storing, checking, integrating, analysing and displaying data that is spatially referenced to the Earth. This is normally considered to involve a spatially referenced computer database and appropriate applications software.

header

See [map header](#).

implicit

Data that is not directly described in a digital form. The relationship between two adjacent objects may be implicit in that they are within a specified distance of each other. To determine this, further processing is required.

layer

A subset of digital map data, selected on a basis other than position. For example, one layer might consist of all features relating to counties and another to wards. Also known as a level.

level

A level corresponds to a single type of administrative unit, for example a ward or a district, and is conceptual in form. See also [layer](#).

line

A series of connected coordinated points forming a simple feature with homogeneous attribution.

line feature

The spatial abstraction of an object in one dimension. Lines may intersect with other lines. They are defined as a series of two or more coordinate pairs and may be curved or straight. Curved lines consist of a series of very short straight line segments. As an object abstraction a line has no width.

line segment

A vector connecting two coordinated points.

line and/or link collect

Whenever an update occurs the original Boundary-Line is broken into many links, due to the need to retain the old part of the boundary. This entity allows the original line to be recreated using the current links. There are as many occurrences of this entity for a given line as there are links that make it up. Any query concerning the history of a line, for example, to recreate a Boundary-Line at a point in time; needs to retrieve all the relevant occurrences and join the links together to form the geometry of the original line. This entity should relate to the NTF Collect record.

link or edge

Links are the representation of line features. They are made up of one or more consecutive non-intersecting link segments with common attributes between two terminating nodes. Links have no connection with other links except at the start or end, via common (shared) terminating nodes (points). All links contain their terminating coordinates. Links may form the boundaries of polygons and may be shared between polygons.

link and node data

A form of vector data in which linear features are represented as links. Links are terminated where they intersect other links. These intersection points, and link ends, may carry nodes whose feature records express the geometric relationships between links.

link and node structure

A data structure in which links and nodes are stored with cross referencing.

link segment

A straight line or vector between two coordinated points.

logical record

A logical record contains all the information relating to a data entity (for example, a feature record). A logical record may comprise one or more physical records.

map generalisation

A reduction in map detail, so that the information remains clear and uncluttered when the map scale is reduced. May also involve re-sampling to larger spacing, and/or a reduction in the number of points in a line.

map header

Data at the start of the digital map file describing that data. It may contain information on the source and history of the geometric data within the map and the coordinate system in use, as well as holding information essential to the management of Ordnance Survey's digital mapping system.

map scale

The ratio between the extent of a feature on the map and its extent on the ground, normally expressed as a representative fraction, such as 1:1250 or 1:10 000.

name

The proper name or label of an object (real world) or feature (object abstraction). The descriptive name might consist of one or more text strings or be an attribute of the object or object abstraction.

National Grid

A unique referencing system which can be applied to all Ordnance Survey maps of Great Britain (GB) at all scales. It is used by Ordnance Survey on all post-war mapping to provide an unambiguous spatial reference in Great Britain for any place or entity whatever the map scale. The National Grid is defined by the OSGB36[®] spheroid.

NTF

A format designed in 1988 specifically for the transfer of spatial information; it is published as British Standard BS 7567 and is administered by the British Standards Institution (see chapter 4 of the technical specification, [NTF explained](#)).

node

An object representation of a point which either does not form any part of a link (isolated node or polygon seed point); or the representation of a point at the start or end of a link (terminating node). The position of a node is defined by a single coordinate pair – which is repeated within all links logically connected at that node and/or containing it. A node is only deleted if the link containing it as a terminating node is deleted.

northings

See [rectangular coordinates](#).

object

A collection of entities which form a higher level entity within a specific data model.

object (real world)

A recognisable discrete part of the real world.

operative date

The date the order was made not necessarily the day it becomes 'live and in-use'.

origin

The zero point in a system of rectangular coordinates.

physical record (NTF)

A physical record may be a fixed length containing 80 characters, or variable length containing up to 80 characters.

point and line data

A form of vector data designed for map production in which all map features are designated as points, lines or text. Point and line data does not carry the topological relationships between features.

point feature

A zero-dimensional spatial abstraction of an object with its position defined by a coordinate pair. Points are represented by nodes which may be isolated or part of a link (terminating). Points may also be represented by symbols which may have attributes such as rotation and size.

polygon

Polygons are a representation of areas. A polygon is defined as a closed line or perimeter completely enclosing a contiguous space and is made up of one or more links. At least one node occurs on the perimeter of a polygon where the bounding link completes the enclosure of the area. There may be many nodes connecting the bounding links of a polygon. Links may be shared between polygons. Polygons may wholly contain other polygons; or be contained within other polygons. Each may contain a single isolated node (seed point) which identifies the polygon.

polygon boundary

The link(s) which enclose a polygon, projected into the horizontal plane. A chain.

polygon point

See [seed point](#).

positional accuracy

The degree to which the coordinates define a point's true position in the world, directly related to the spheroid and/or projection on which the coordinate system is based.

precision

The exactness with which a value is expressed, whether the value be right or wrong.

record

A set of related data fields grouped for processing.

rectangular coordinates

Also known as X-Y coordinates and as eastings and northings. These are two-dimensional coordinates which measure the position of any point relative to an arbitrary origin on a plane surface (for example, a map projection).

relative accuracy

The measure of the internal consistency of the positional measurements in a dataset. For many local area purposes, for example, records of utility plant, relative accuracy is more important than absolute accuracy. In this case, accurate measurement of offsets from fixed points is required rather than knowledge of the true position in space.

resolution

A measure of the ability to detect quantities. High resolution implies a high degree of discrimination but has no implication as to accuracy. For example, in a collection of data in which the coordinates are rounded to the nearest metre, resolution is 1 metre, but the accuracy may be ± 5 metres or worse.

section

In NTF terminology, a subdivision of a database. In Ordnance Survey terms this equates to a single map unit (that is a digital map file or a tile).

seed point

A coordinated point (isolated node) within an area (usually a defined polygon) to which alphanumeric information may be attached as an attribute, for example, a name or feature code. Also called a polygon seed, area seed or representative point.

segment

A chord defined by two consecutive coordinates in a line string.

source scale

The scale of the source information from which the map was digitised. The scale of survey for a basic scale map, or the scale of the source map for a derived map.

spatial data

Data which includes a reference to a two- or three-dimensional position in space as one of its attributes. It is used as a synonym for geometric data.

Statutory Instrument

An order made by a Minister under delegated power from Parliament. Contains changes to boundary information, the alignment, type or relationship to a named area (amalgamation) or a change of name to an area are made by order.

string

- 1 A set of items which can be arranged into a sequence according to a rule.
- 2 A sequence of coordinate pairs or triplets making up a line or a link.

structured data

Data within which collections of features (of any type) form objects. Topographically structured data also contains topological information, defining the relationships between features and objects.

terminator

A character, character string, field or record used to signal the end of a record or section or volume or database.

topographic database

A database holding data relating to physical features and boundaries on the surface of the Earth.

topography

The study of the physical features of the Earth. A topographic map's principal purpose is to portray and identify the features of the Earth.

topology

The study of the properties of a geometric figure which are not dependant on position, such as connectivity and relationships between lines, nodes and polygons.

transfer format

The format used to transfer data between computer systems. In general usage this can refer not only to the organisation of data, but also to the associated information, such as attribute codes, which are required in order to successfully complete the transfer.

transfer medium

The physical medium on which digital data is transferred from one computer system to another. For example, CD-ROM.

transfer set

A specific NTF term for the data, together with its supporting information, which the customer receives.

update

The process of adding to and revising existing digital map data to take account of change.

vector

A straight line joining two data points.

vector data

Positional data in the form of coordinates of the ends of line segments, points, text positions and so on.

volume

A physical unit of the transfer medium, that is, a single disk, a single cartridge or a single tape.