



# Digimap®

Image courtesy Colin Palmer



British Geological Survey



## Geology Digimap

Explore the intricate details of our planet, both offshore and onshore, with our comprehensive geological maps. Annotate your findings, print your discoveries or download the data for further analysis in GIS.

Support is just a click away with our extensive online guidance.

Available data includes:

- Offshore and Onshore Geology
- Soil Parent Material
- Superficial Thickness Model
- Onshore Borehole Index
- Groundwater Data



Scan to find out more about our Collections



# Geology Digimap

Geology Digimap is an innovative online service that provides access to a wealth of digital map data from the British Geological Survey. It's designed with an academic context in mind, making it a valuable resource for students, researchers, and educators in the field of geology.

## Key Features

### Mapping Tool

- View, annotate, print maps. Download data for further analysis in GIS or CAD software

### Unearth Geological Data

- Detailed offshore and onshore geology data
- Soil-Parent Material and Superficial Deposit Thickness

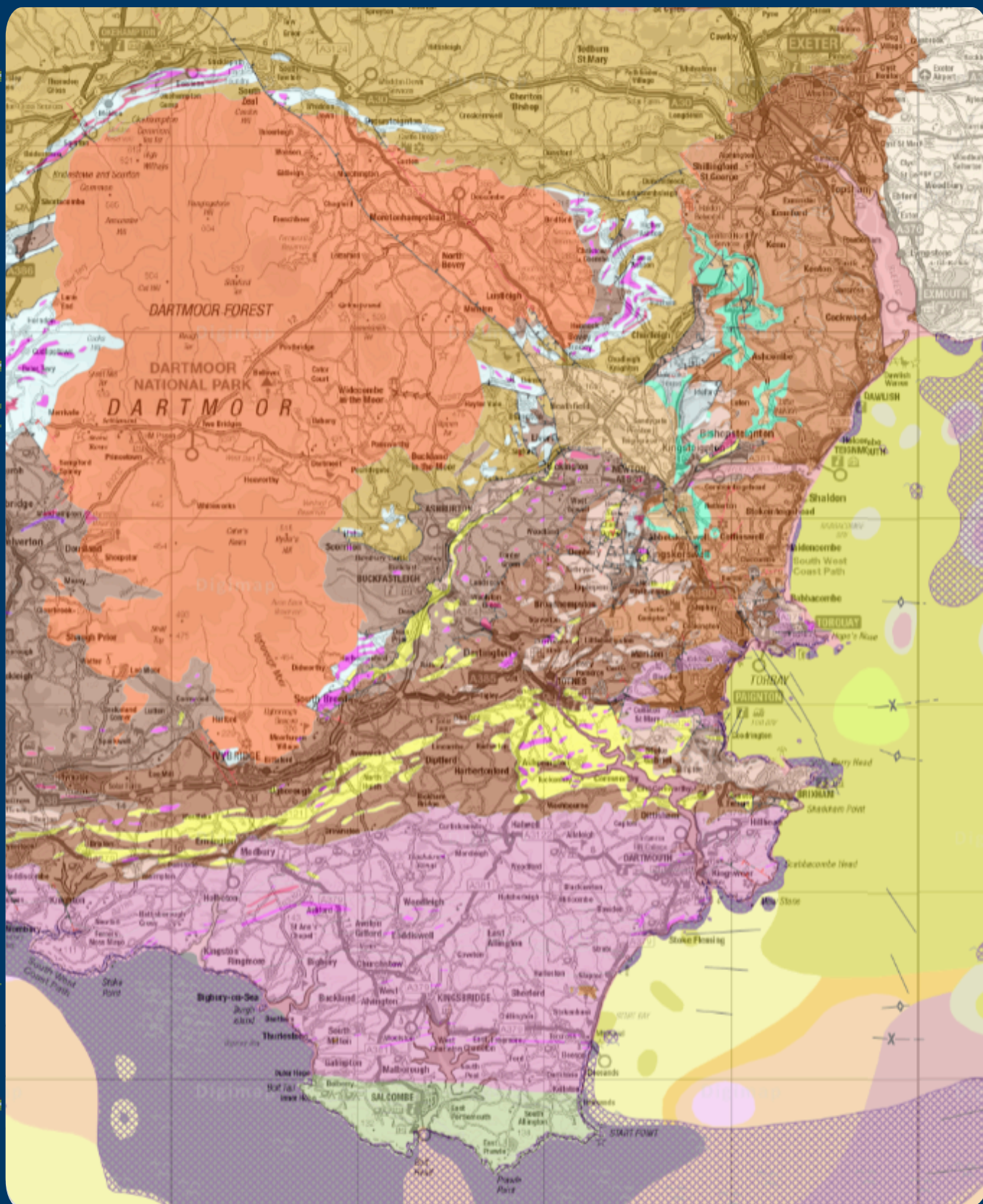
### Rock Information

- Lexicon of Named Rock Units and Onshore Borehole Index

### Groundwater

- Geological Indicators of Flooding, Permeability Indices and Hydrogeology

Geological Map Data BGS © UKRI 2024 © Crown copyright and database right



## Digimap Support

**Help at Hand:** Comprehensive assistance via Digimap applications

**Learn with Us:** Regular webinars for all users

**We're Here:** Dedicated helpdesk support from EDINA

**Contact Us:** Any queries? Email us at [digimap@ed.ac.uk](mailto:digimap@ed.ac.uk).

**Discover more:** Visit <https://digimap.edina.ac.uk/> for subscription details, data availability and user guides

## Stay Connected

 [https://twitter.com/EDINA\\_Digimap](https://twitter.com/EDINA_Digimap)

 <https://www.facebook.com/EDINADigimap>

 <https://www.youtube.com/user/EDINADigimap>