



Digimap[®]



Lidar Digimap[®]

Lidar data from Great Britain's environmental agencies

- Digital Terrain Model
- Digital Surface Model
- Point Cloud
- Vertical aerial photography

Download map data for use in GIS and CAD applications

Extensive online support and guidance

EDINA

<https://digimap.edina.ac.uk/>

For more information, email digimap@ed.ac.uk

What is Lidar Digimap?

Lidar Digimap is an online service delivering high-quality digital map data from UK government environmental agencies.

Lidar Digimap consists of one application:

- Use **Data Download** to download map data and load it into GIS or CAD software for further analysis and manipulation.

Map data

Lidar data is a very accurate terrain model of the earth's surface. It is captured by firing very rapid laser pulses (thousands of times per second) at the ground surface. By examining the laser energy reflected back from the ground the surface is captured as a dense cloud of 3D points, which are converted to highly detailed terrain models.

Separate datasets are available for England, Scotland and Wales. The area coverage and available scales vary between countries.

- **Digital Terrain Model** - captures the elevation of the earth's surface terrain. 4 scales (25cm, 50cm, 1m and 2m).
- **Digital Surface Model** - captures the natural and built features, such as buildings, tree canopy, powerlines and other features. 4 scales (25cm, 50cm, 1m and 2m).
- **Point Cloud** - the original captured points

Vertical aerial photography

- True Colour (RGB) Aerial Photography
- 4-Band Aerial Photography
- Near Infra-Red Aerial Photography
- Night Time Aerial Photography

User Support

Comprehensive help is available in Digimap applications. Regular webinars are available to all users. Each subscribing institution has local user support staff. Any user can contact the EDINA helpdesk at digimap@ed.ac.uk.

Access

Access is free to staff and students of subscribing institutions. For further information on subscriptions, available data, and using the service, go to: <https://digimap.edina.ac.uk/>

Follow us



<http://digimap.blogs.edina.ac.uk/>



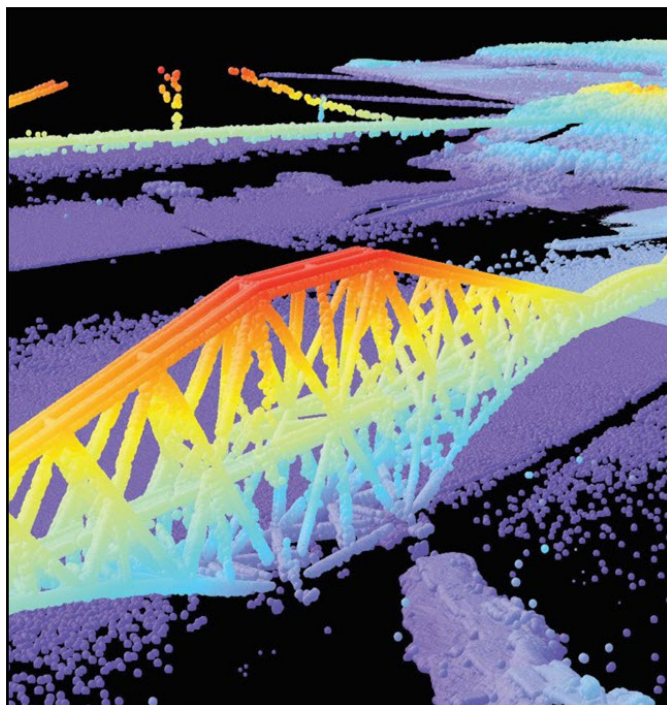
https://twitter.com/EDINA_Digimap



<https://www.facebook.com/EDINADigimap>



<https://www.youtube.com/EDINADigimap>



Environment Agency



Scottish Environment Protection Agency



Natural Resources Wales



EDINA is a centre for digital expertise and online service delivery at the University of Edinburgh.
<https://edina.ac.uk>