



*The 'go to' organisation for  
Local Government  
improvement in Scotland*

# Improvement Service Spatial Hub Local Government Data

# Introduction

---

Local Government creates a huge amount of data in the course of delivering policies and services to citizens. The Spatial Hub was created to bring all of this useful data together and publish them to set standards – so that nobody else is burdened with having to do so.

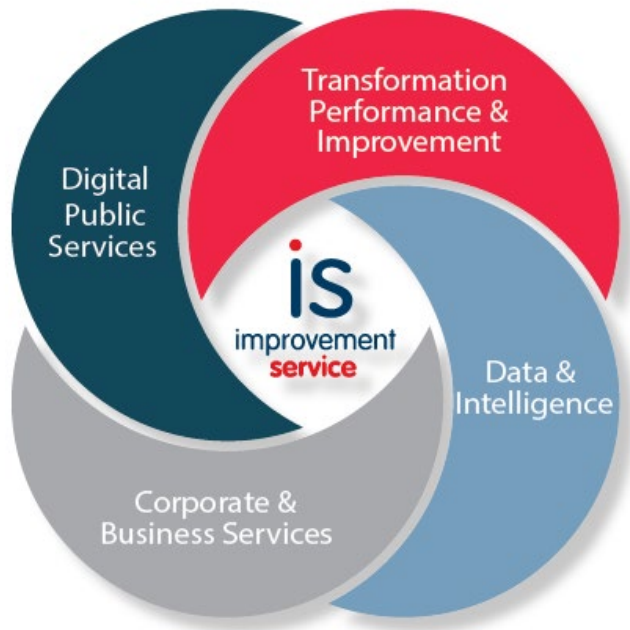
44 datasets are now made available to academia via DigiMap covering such diverse themes as environment, health, pollution, planning, society and transport.

These spatial datasets can be used by academia for any of their own specific research interests – whether that be looking at the nature of the planning system through planning-related data, how local authorities protect their valuable land through designations or how they go about providing services and facilities to their citizens.

# Spatial Hub Infrastructure

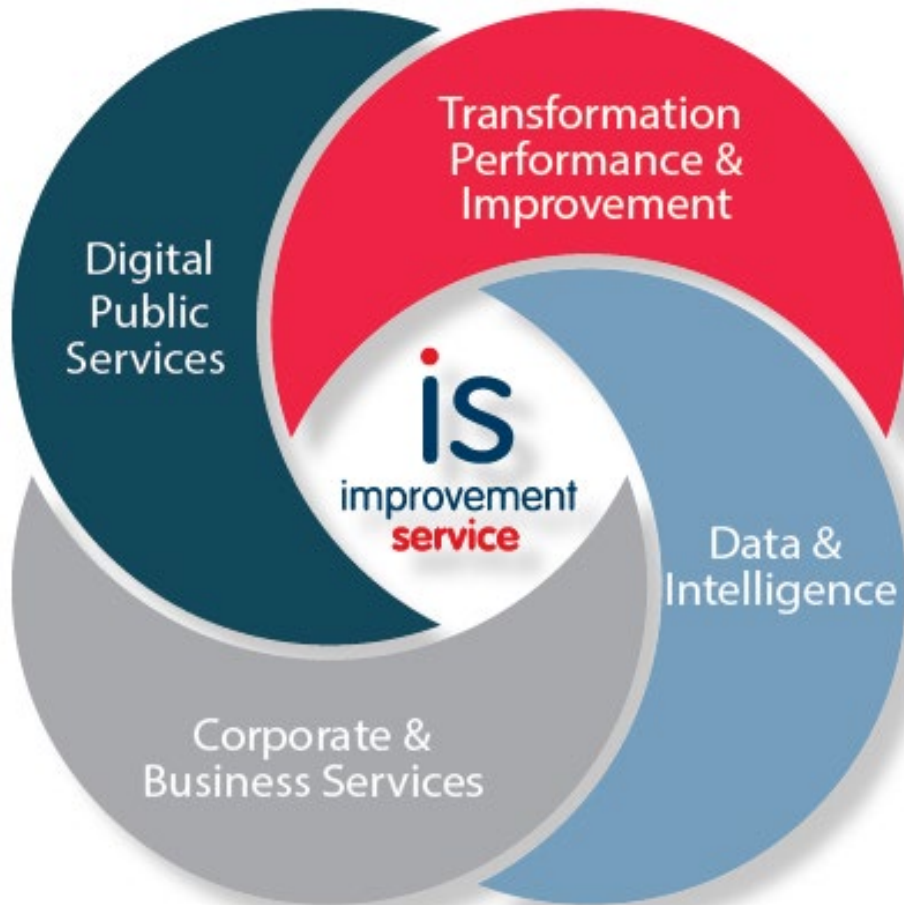
- What we do – the Improvement Service
- What we have – Spatial Hub Data
- How we get it – the Spatial Hub
- How it is supplied – the Spatial Hub
- How it is used – Digital Planning and Infrastructure

# The Improvement Service



- Provide **leadership to Local Government** and the wider system on **improvement and transformation**;
- Develop **capability and capacity** for improvement within Local Government;
- Deliver **national improvement programmes** for Local Government and partners and support councils to improve at a local level;
- Provide **research, data and intelligence** to inform Local Government's policy-making and decision-making and to drive improvement;
- Deliver **national shared service applications and technology platforms**; and
- **Broker additional resources from outwith the sector** to support the delivery of Local Government's priorities.

# The Improvement Service



- An organisation of 70
- A team of 16:
  - Spatial
  - Wider data and research

Street and Address Gazetteers  
Spatial Hub  
Local Government Benchmarking Framework  
Community Planning Outcomes Profile  
Covid 19 Economic Impact Dashboard  
Research and evaluation  
Sub Area Population Projections  
Data Hub for Address Matching

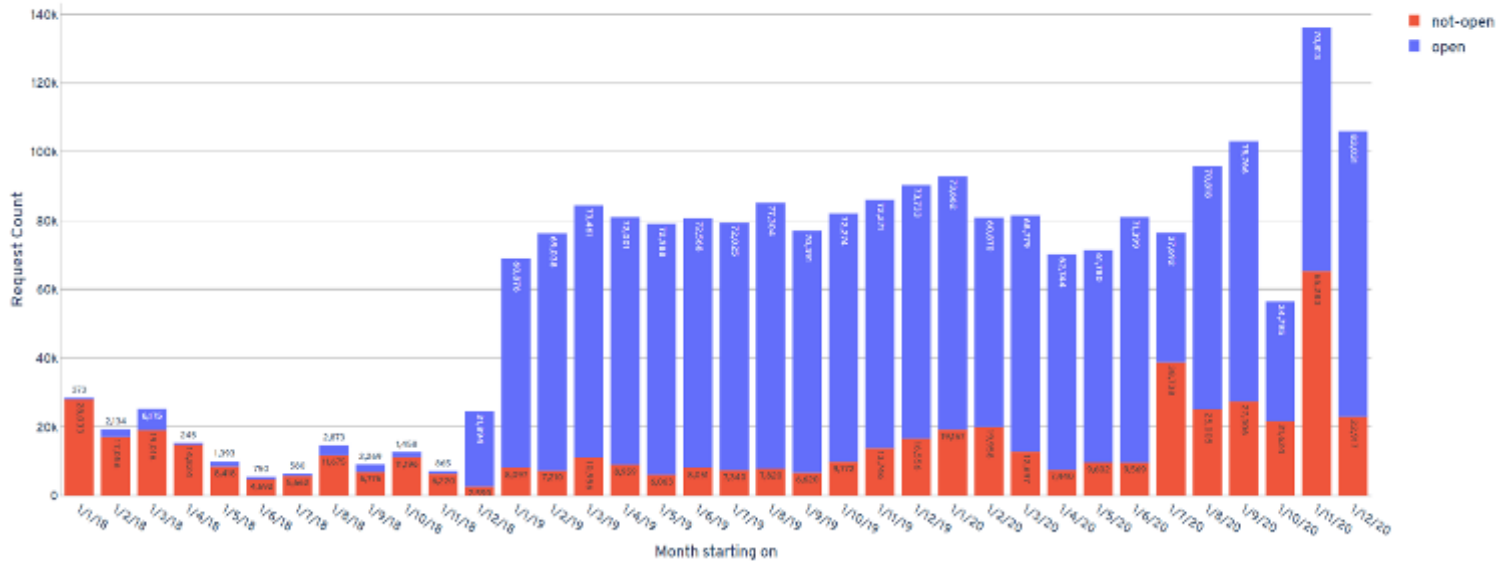
# The Spatial Hub - Data

- Air Quality Management Areas
- Alcohol Prohibition Areas
- Building Standards
- Car Parking
- Care Homes for Older People
- Community Asset Transfer Register
- Community Council Boundaries
- Conservation Areas
- Contaminated Land
- Core Paths
- Council Asset Register
- Culverts
- Cycling Network
- Employment Land Supply
- Forestry and Woodland Strategy
- GP Practices
- Green Belt
- Gritting Routes
- Historic Environment Records
- Housing Land Supply
- Libraries
- Local Authority Boundaries
- Local Development Plans
- Local Landscape Areas
- Local Nature Conservation Sites
- Local Nature Reserves
- NHS Hospitals
- Pharmacies
- Planning Applications
- Polling Districts
- Polling Places
- Private Water Supply
- Recycling and Waste Facilities
- Renewable Energy Sites
- Safety Features
- School Catchments
- Septic Tanks
- Smoke Control Areas
- Street Furniture
- Town Centres
- Tree Preservation Orders
- Vacant and Derelict Land
- Wind Turbine Spatial Framework

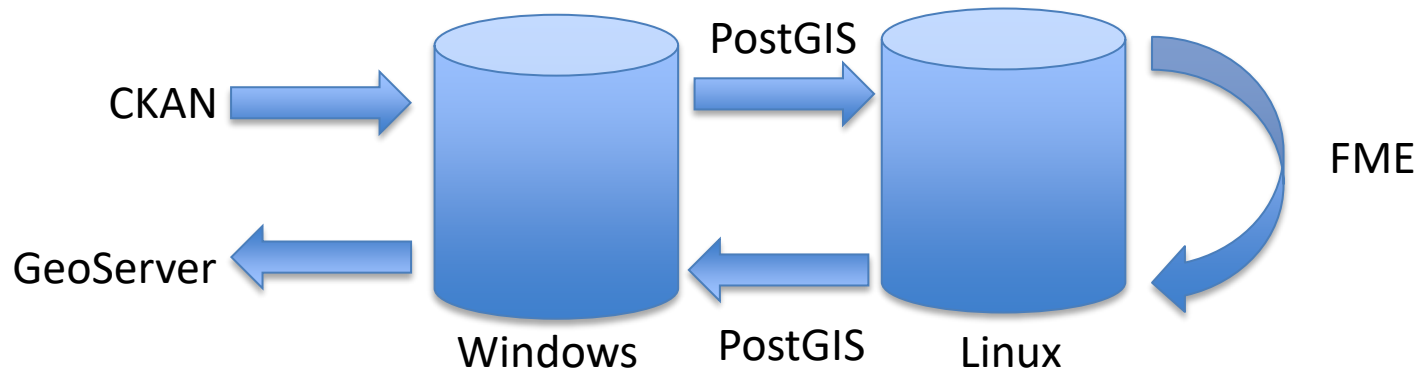
This model is based on the One Scotland Gazetteer (which has a simpler structure)



Data usage 2018 - 2020 per month

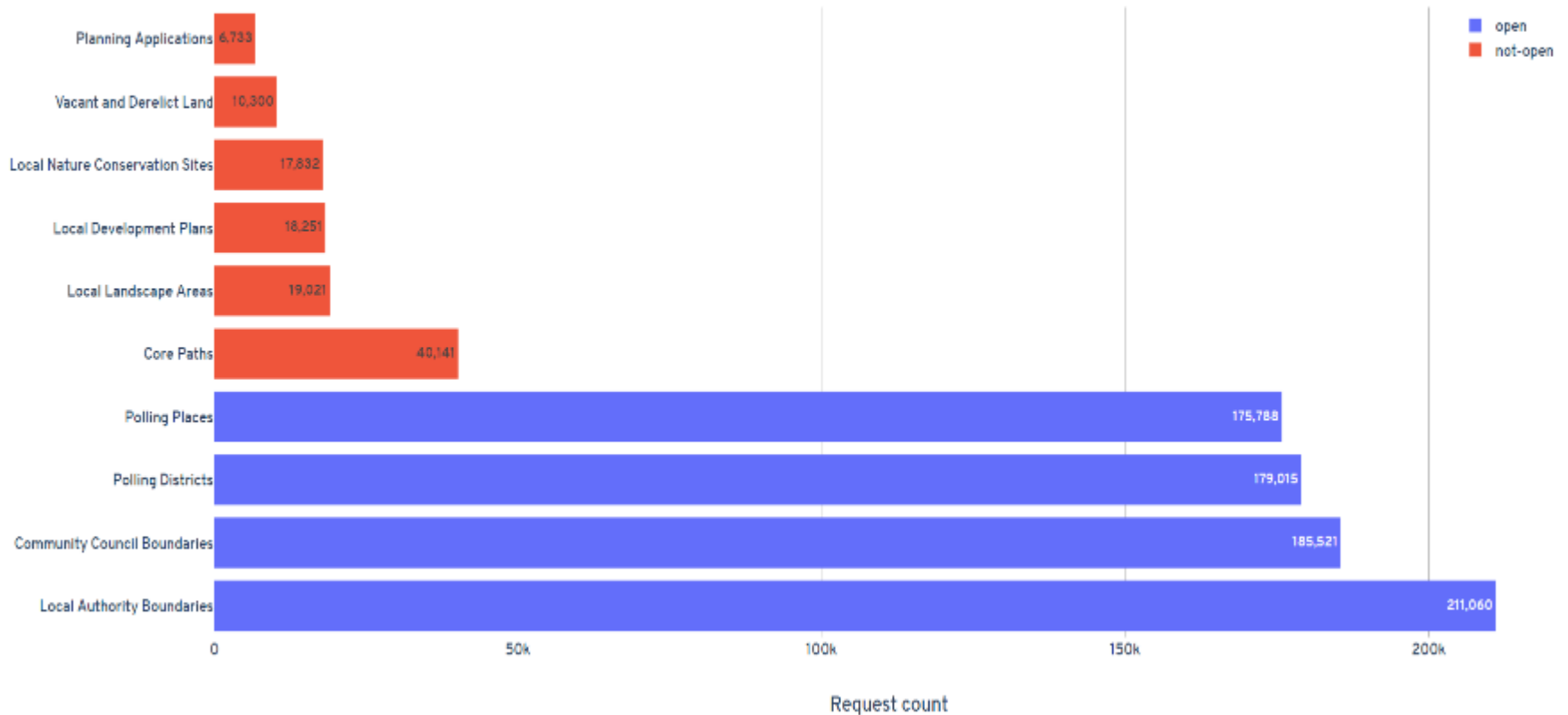


# The Spatial Hub - Infrastructure



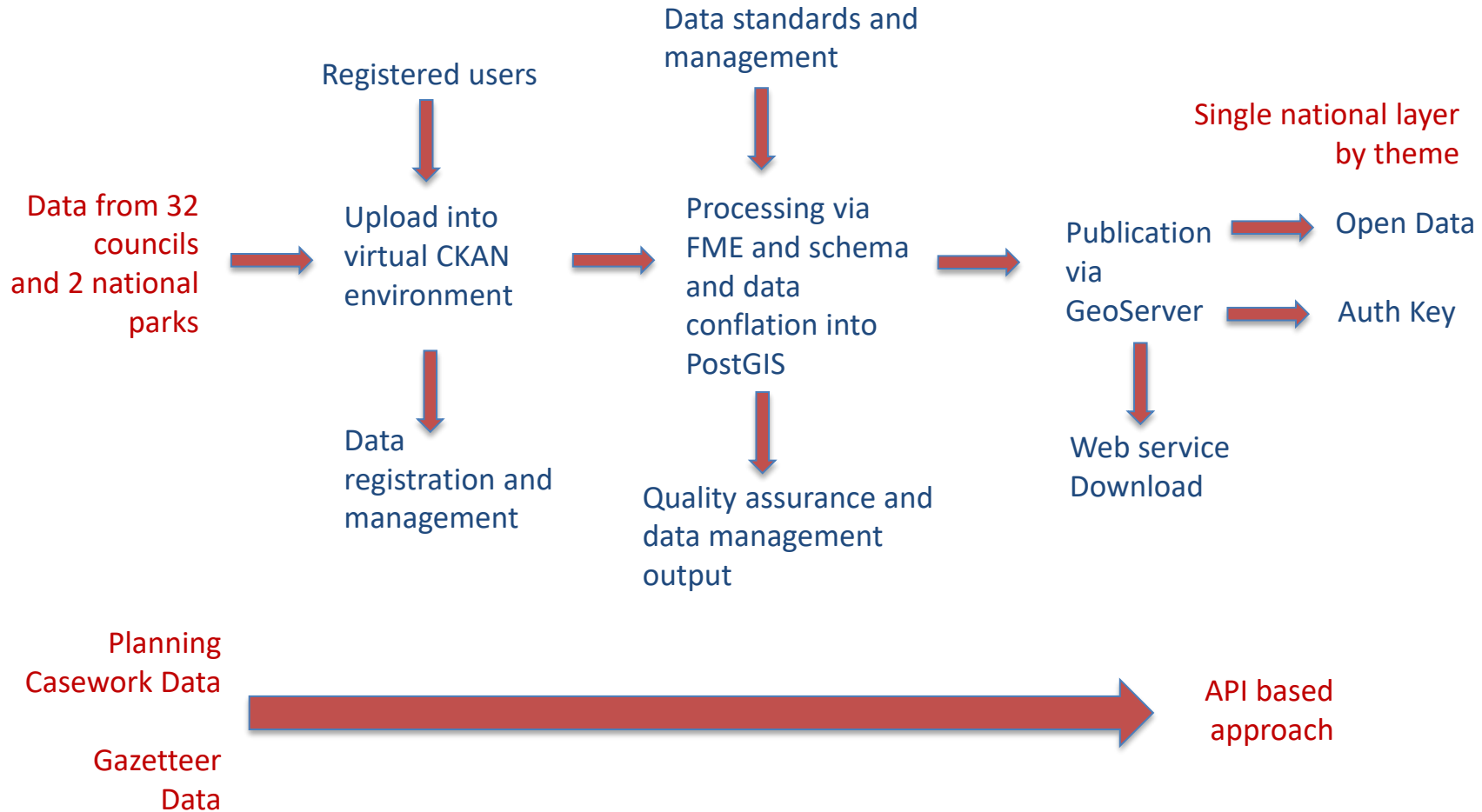
# Growth of Spatial Hub

Spatial Hub top 10 datasets

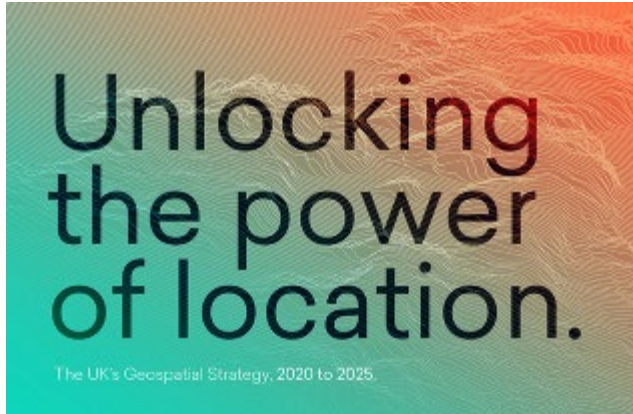




# Spatial Hub Data Supply



# Growth of Geospatial and Data



# Data Use – Digital Planning

- Digital Planning and Digital Transformation
  - Scottish Government planning reform
  - Digital-led planning system
  - Entirely dependant upon data (spatial)
- Assembly of Planning Policy Information
  - A discrete example of the requirement for spatial data from local authorities
  - Two-yearly modelling of past and planned development
  - Scottish Water and Transport Scotland
- Datasets
  - Planning applications (where development is permitted)
  - Local development plans (allocation of development land in advance)
  - Housing and Employment Land Supplies (evidence of adequate land)



# Planning Pathfinders

- 2020: a focus on data quality, standards and governance in support of the Digital Planning Strategy
- 2021: implementation of data standards, quality and governance on a “data ecosystem basis”



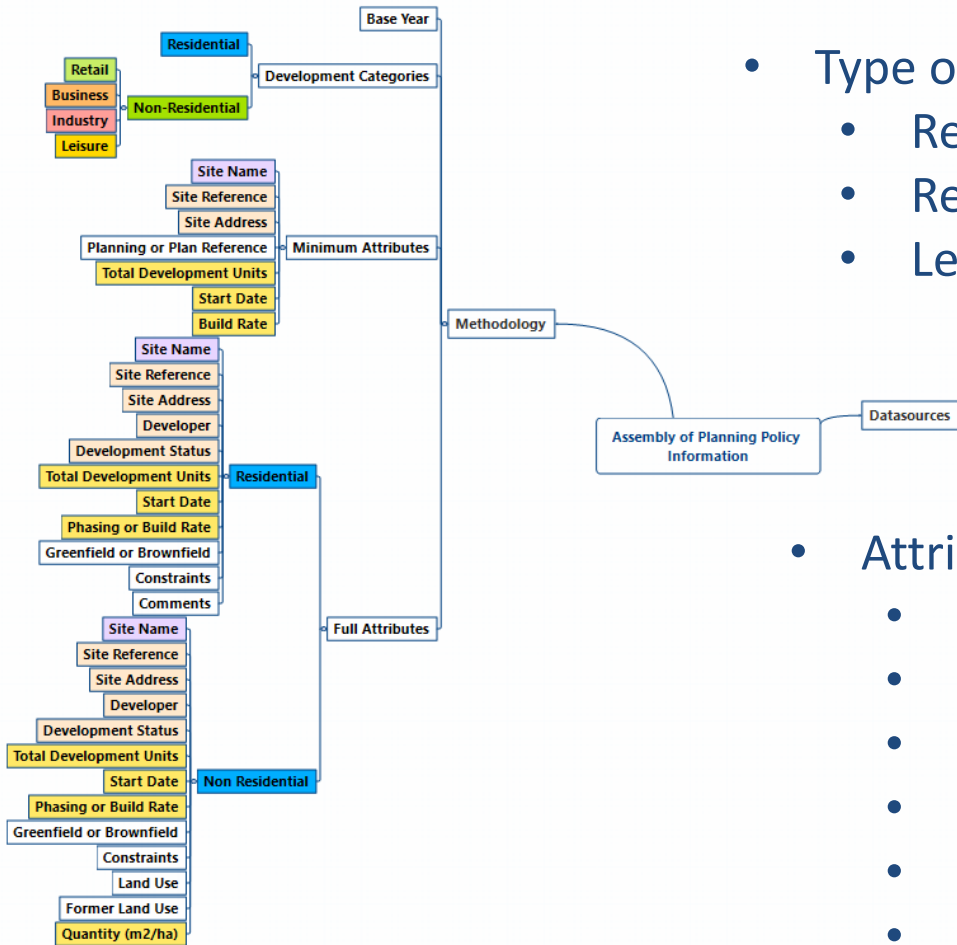
- **Mission 1: Data**  
Unlock the value of planning data
- **Mission 2: Digital Technologies**  
Deliver an end-to-end digital planning experience
- **Mission 3: Ways of working**  
Create the conditions for digital to flourish
- **Mission 4: People**  
Use digital tools to drive collaboration and engagement
- **Mission 5: Innovation**  
Embed a culture of digital innovation

# Data Ecosystem

- The systems that contain the data
- The processes around the data – standards, governance, management
- The skills of those creating and maintaining the data
- The purpose and uses of the data
- The data itself – quality, standards etc



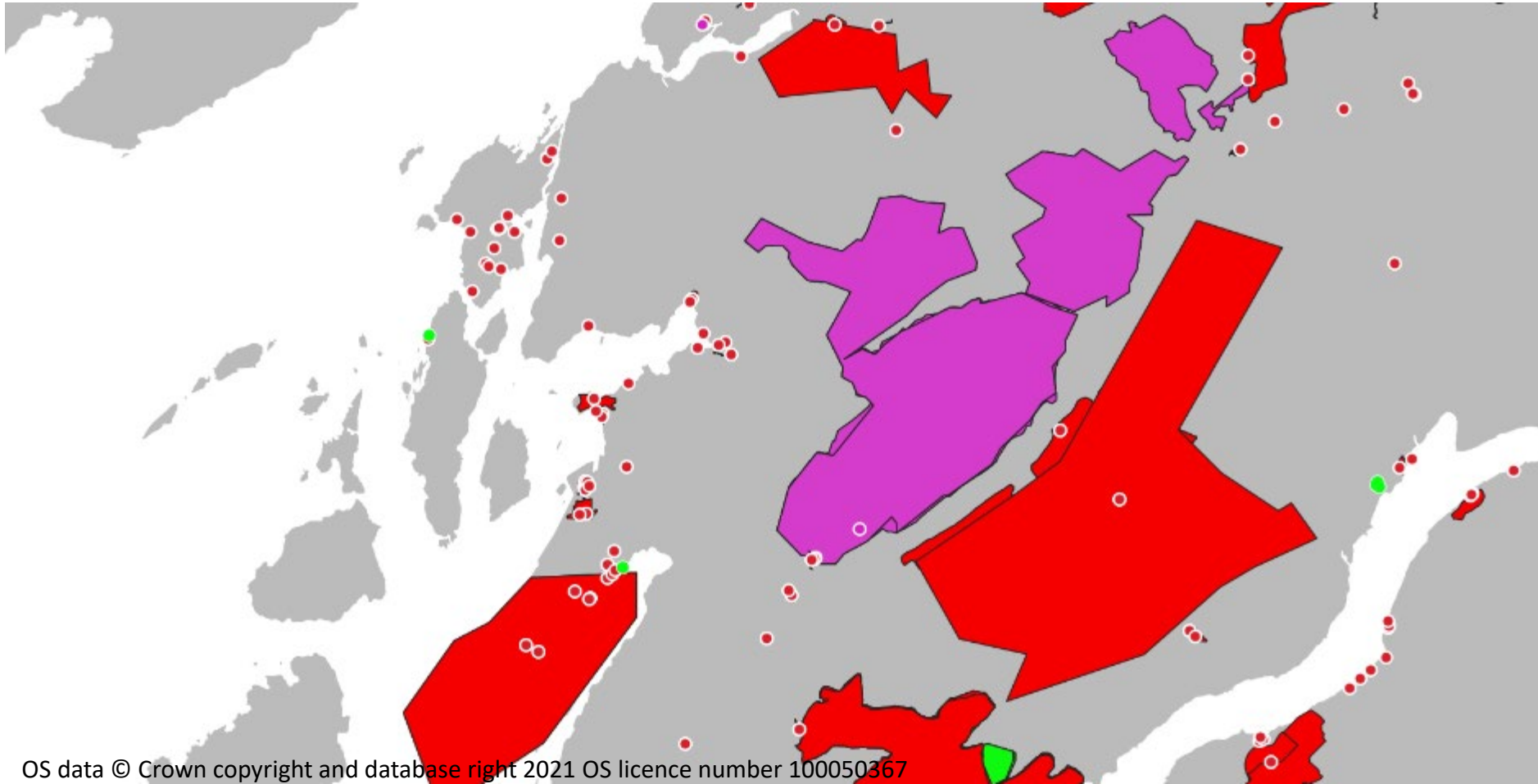
# Data Use – Infrastructure Models



- Type of development
  - Residential
  - Retail, Business, Industry, Leisure, Education, Health

- Attributes
  - Geometry
  - Site information
  - Site size
  - Capacity
  - Past development
  - Future phasing of development

# Data Use – Infrastructure Models



# Data Use – Infrastructure Models

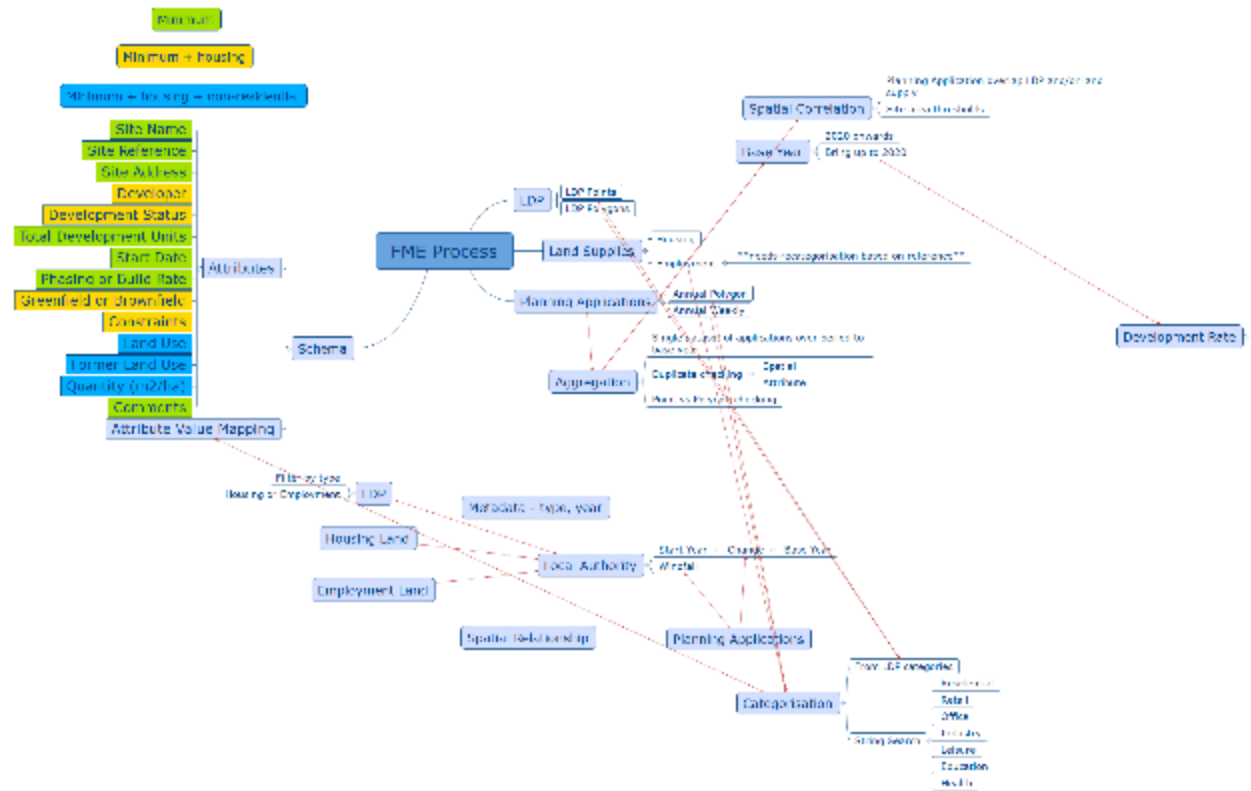
- Schema coverage for housing land data
- Sometimes data is separated into spatial and tabular
- Capacity, completions, remaining and phasing needed for quantitative analysis

town	g_capacity	comp	current	details	nr_develop	duelling	effective	first_yea	ldp_reference	mac_planning	remain	site_loc	site_nam	site_rele	site_size	status	nr_tenure	gear_0m	gear_1m	gear_2m	gear_3m	gear_4m	gear_5m	gear_6m	gear_7m	gear_8m	gear_9m	gear_10m
1	1	1	1														1	1	1	1	1	1						
2	1	1	1														1	1	1	1	1	1						
3	1	1	1														1	1	1	1	1	1						
4	1	1	1														1	1	1	1	1	1						
5	1	1	1														1	1	1	1	1	1						
6	1	1	1														1	1	1	1	1	1						
7	1	1	1														1	1	1	1	1	1						
8	1	1	1														1	1	1	1	1	1						
9	1	1	1														1	1	1	1	1	1						
10	1	1	1														1	1	1	1	1	1						
11	1	1	1														1	1	1	1	1	1						
12	1	1	1														1	1	1	1	1	1						
13	1	1	1														1	1	1	1	1	1						
14	1	1	1														1	1	1	1	1	1						
15	1	1	1														1	1	1	1	1	1						
16	1	1	1														1	1	1	1	1	1						
17	1	1	1														1	1	1	1	1	1						
18	1	1	1														1	1	1	1	1	1						
19	1	1	1														1	1	1	1	1	1						
20	1	1	1														1	1	1	1	1	1						
21	1	1	1														1	1	1	1	1	1						
22	1	1	1														1	1	1	1	1	1						
23	1	1	1														1	1	1	1	1	1						
24	1	1	1														1	1	1	1	1	1						
25	1	1	1														1	1	1	1	1	1						
26	1	1	1														1	1	1	1	1	1						
27	1	1	1														1	1	1	1	1	1						
28	1	1	1														1	1	1	1	1	1						
29	1	1	1														1	1	1	1	1	1						
30	1	1	1														1	1	1	1	1	1						



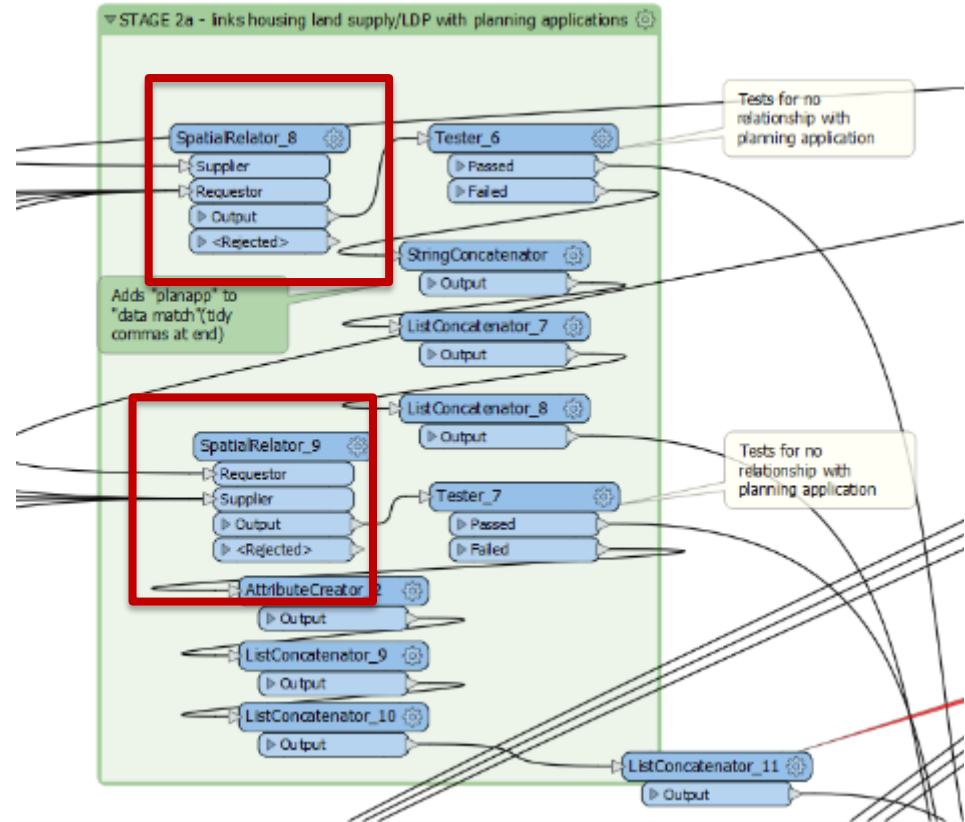
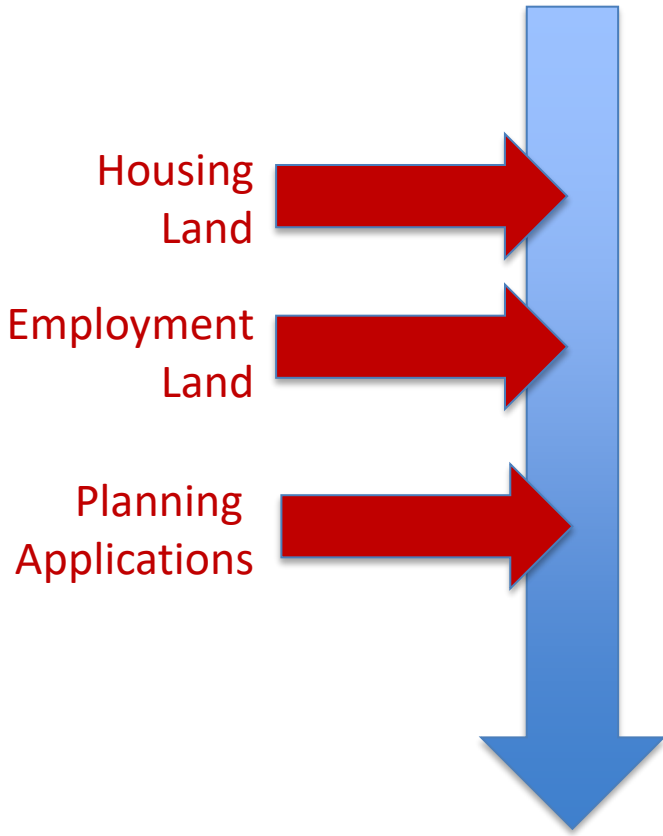
# Data Use – Infrastructure Models

- Using FME with conflated layers
- Some pre-categorisation
- Others fall into clear categories
- However, further categorisation needed

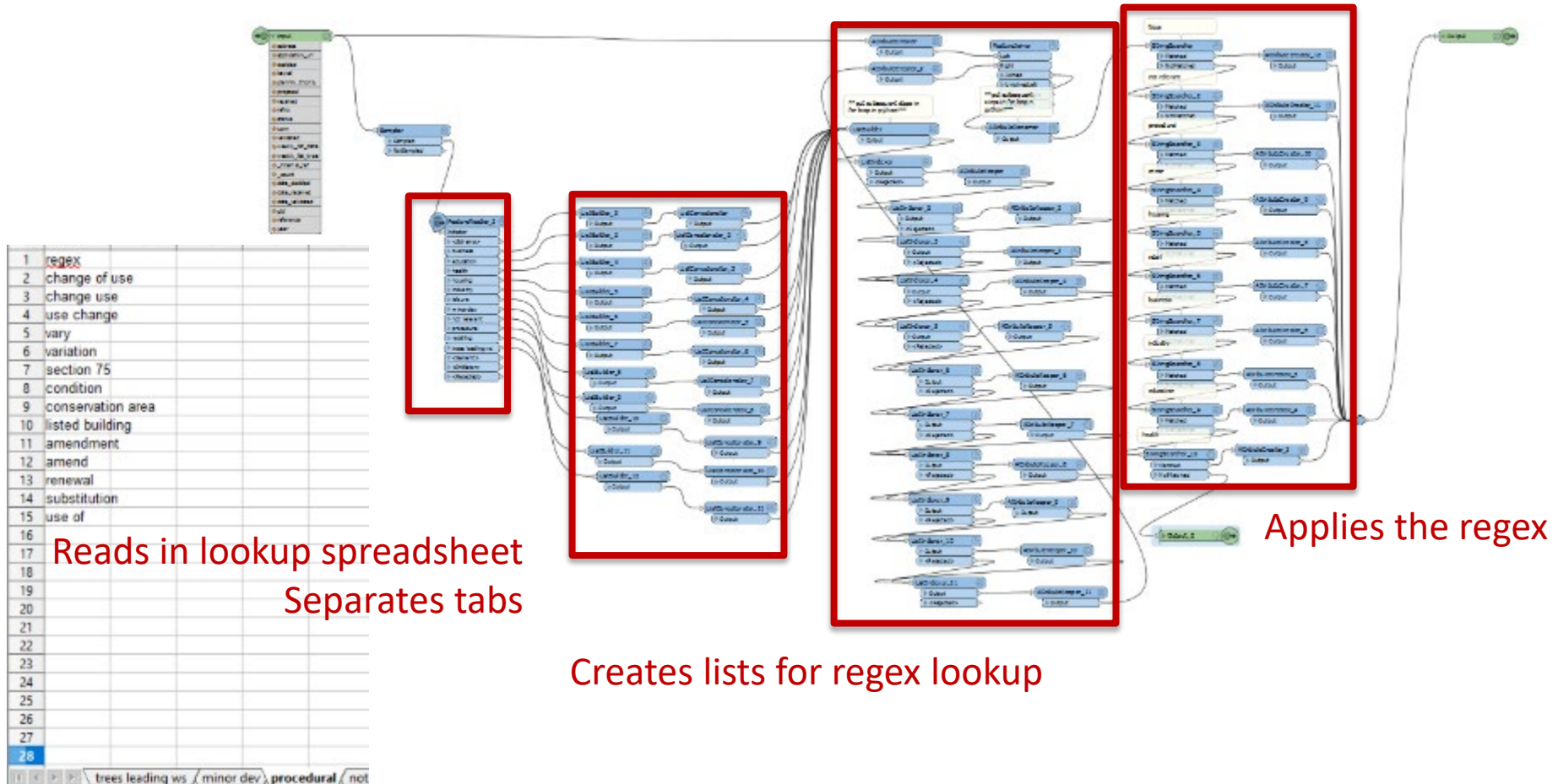


# Data Use – Spatial Relationships

Local Development Plan sites



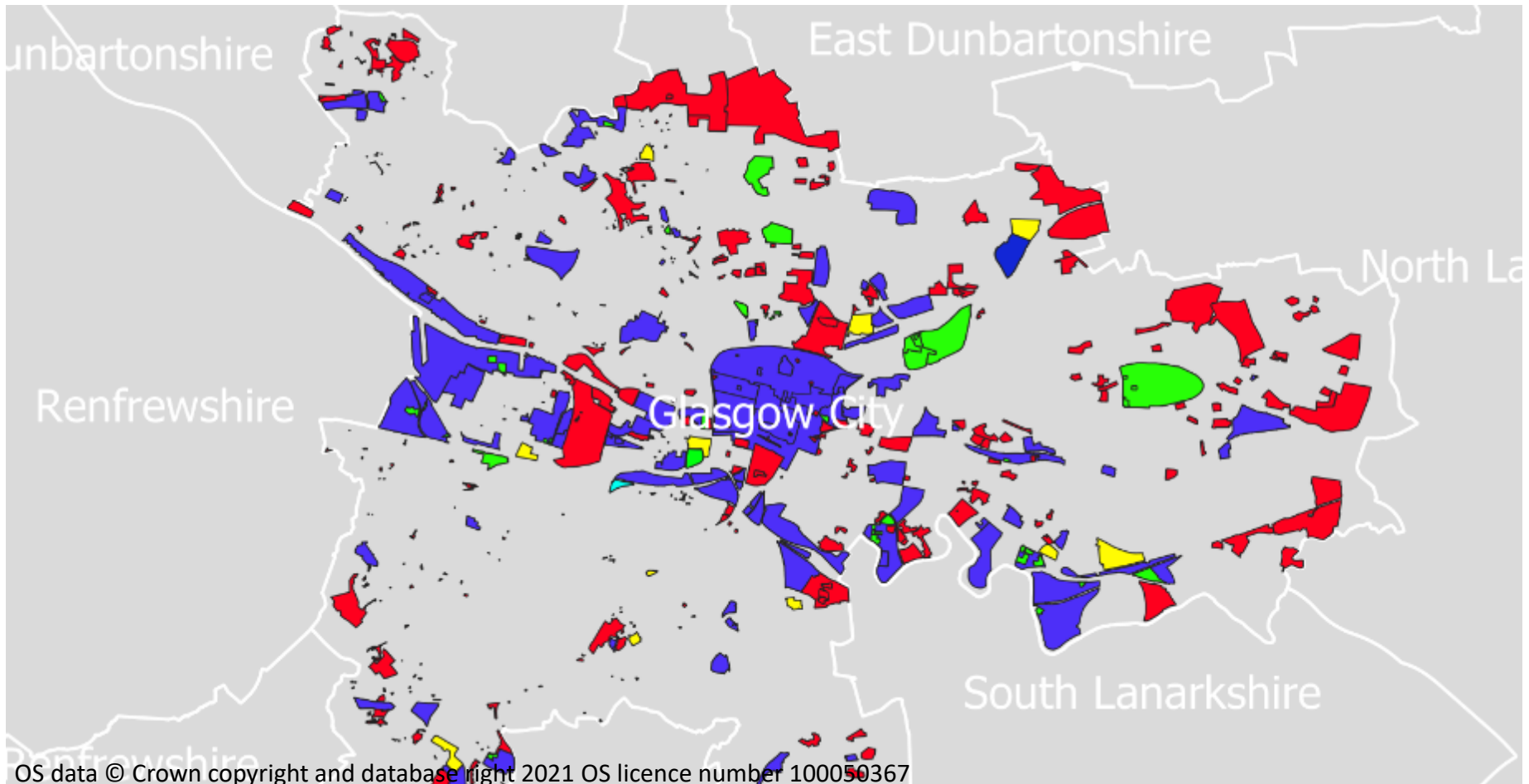
# Data Use – Attribution



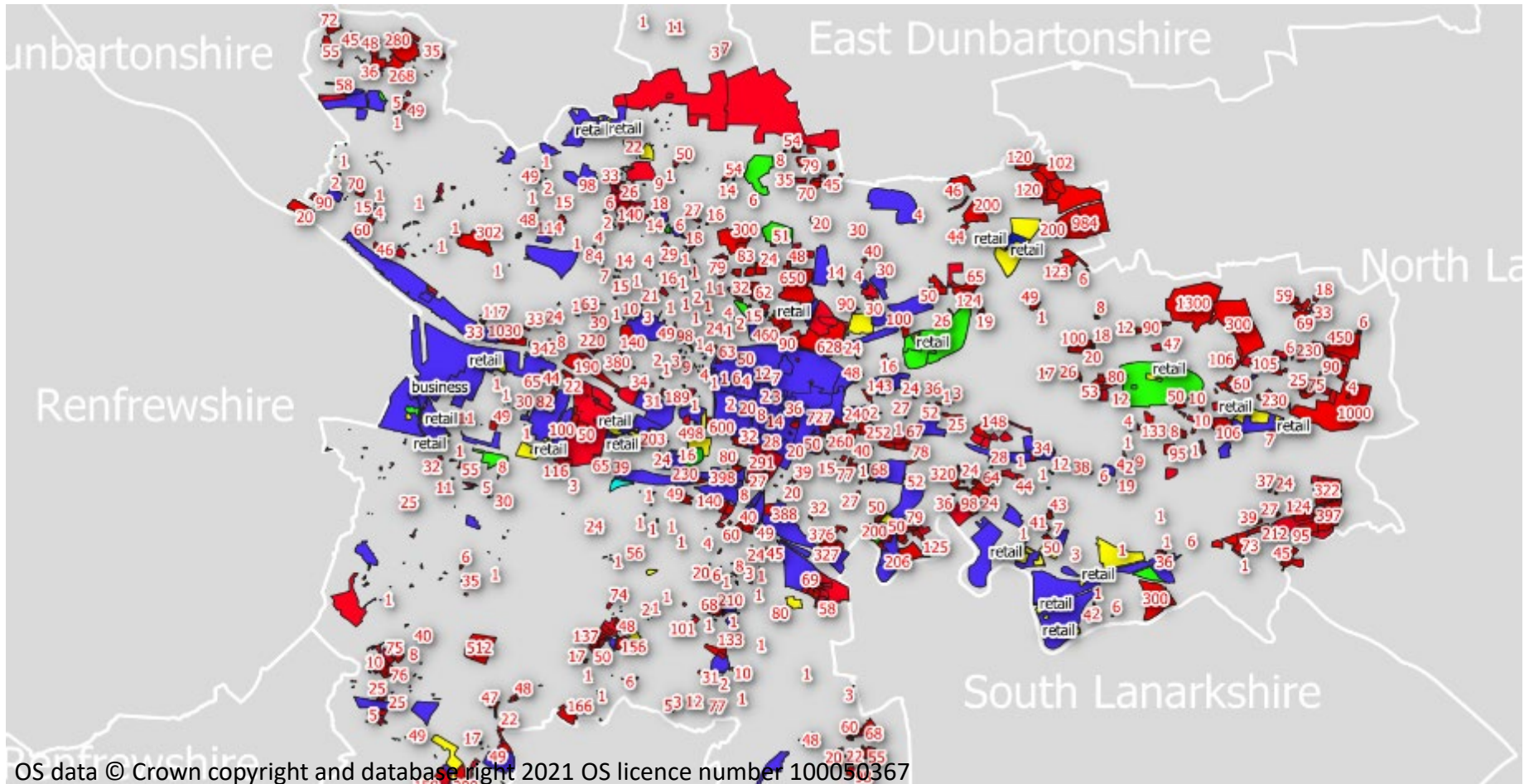
# Outputs



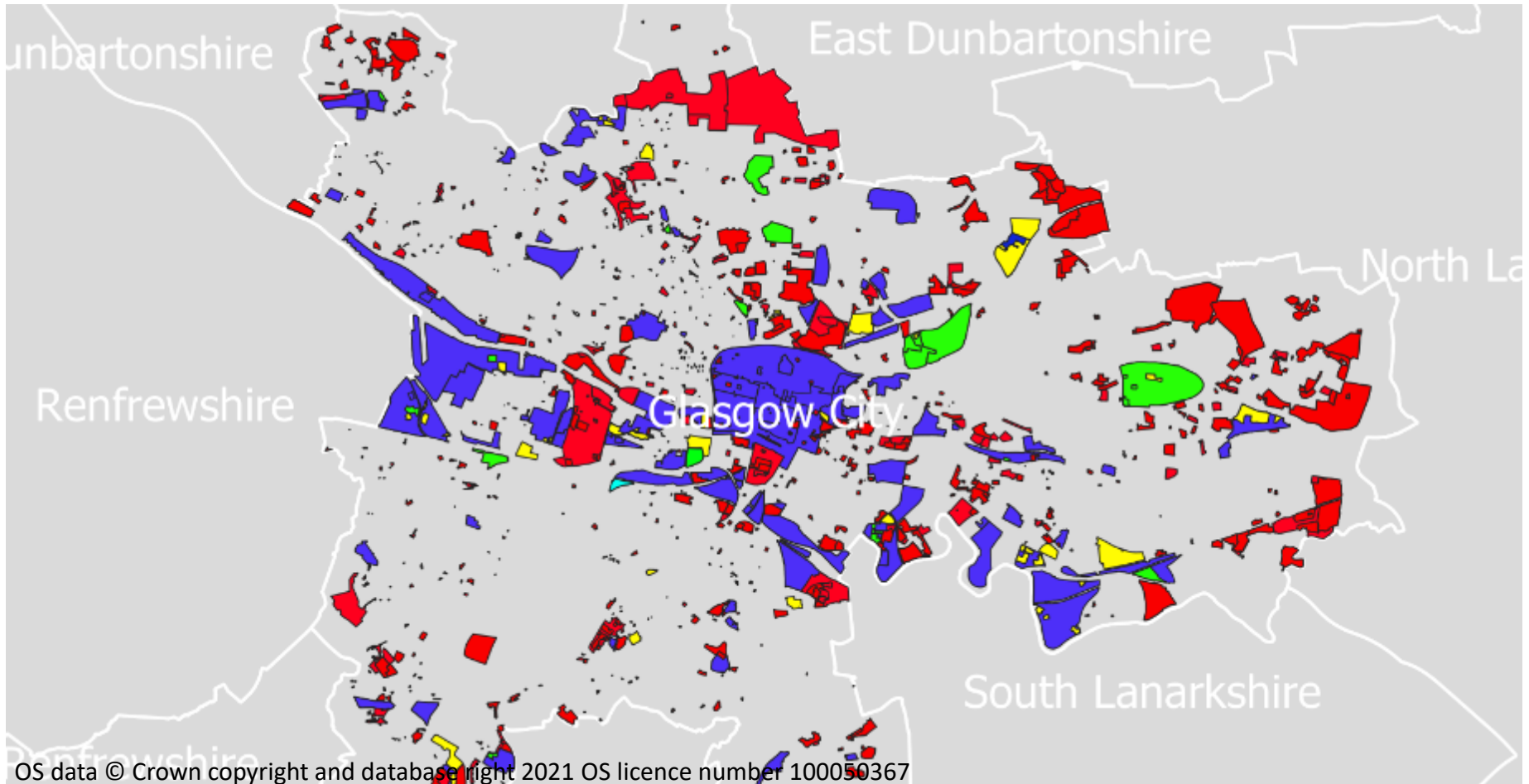
# Outputs



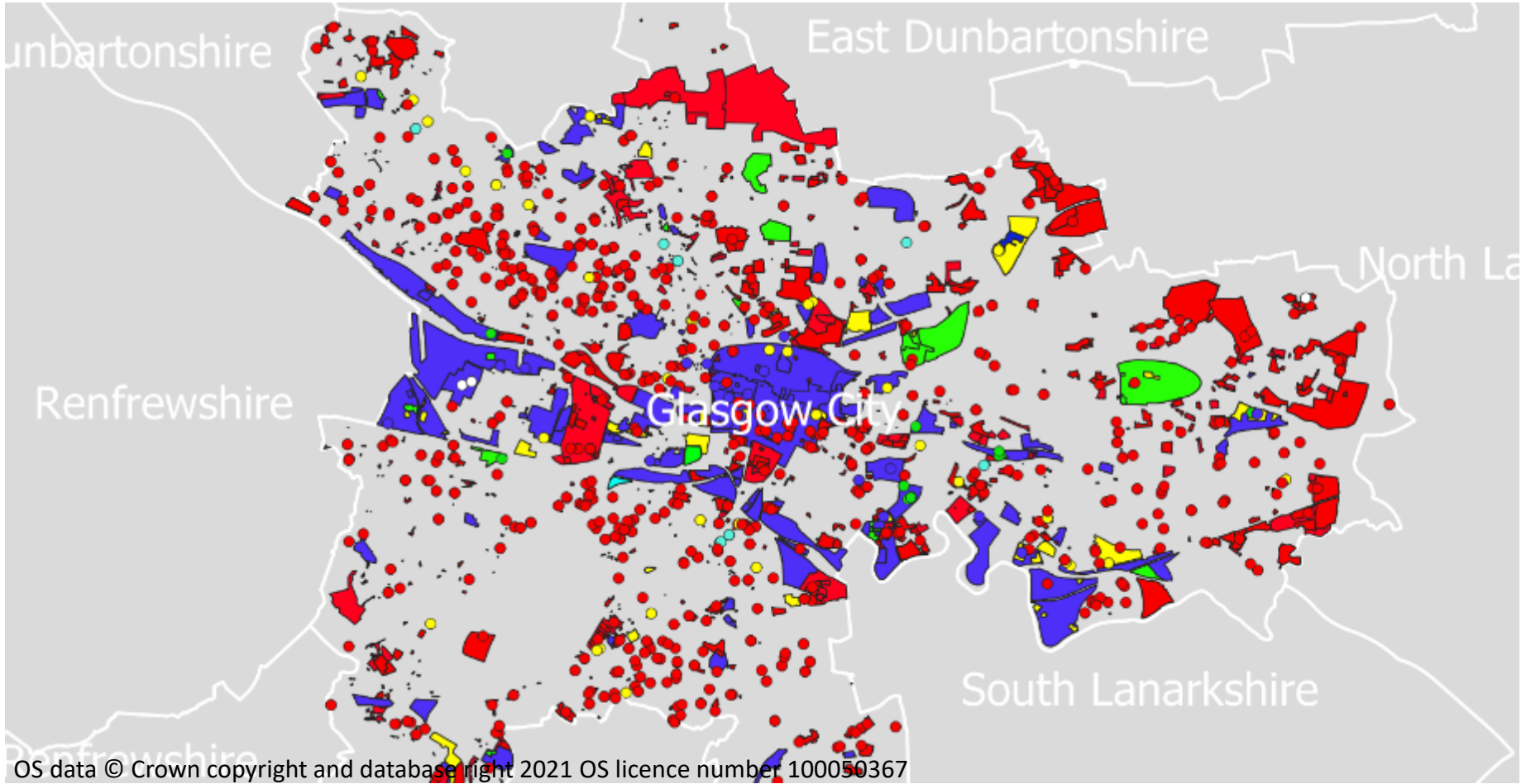
# Outputs



# Outputs



# Outputs





# Strategic Infrastructure Modelling

## Scottish Water Operational Boundaries

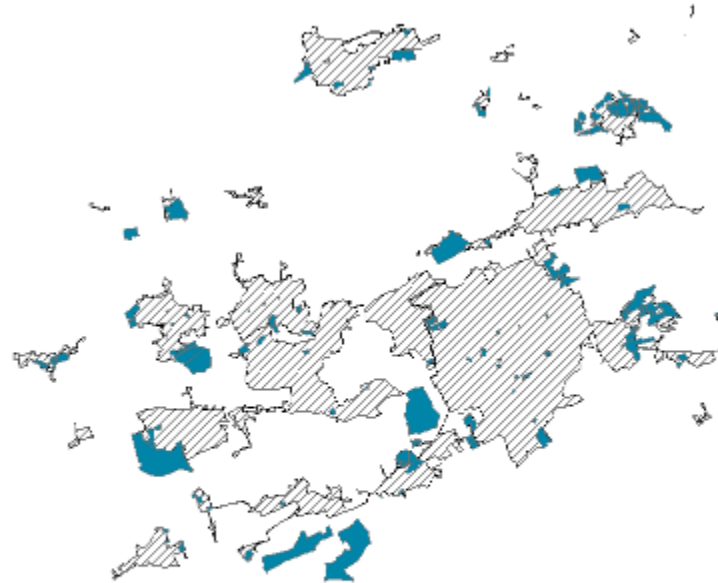


OS data © Crown copyright and database right 2021 OS licence number 100050367

*Data from Scottish Water*

# Strategic Infrastructure Modelling

Spatial Hub polygons of Housing Land Supply plus additional information on development start date, build out rate, and completions

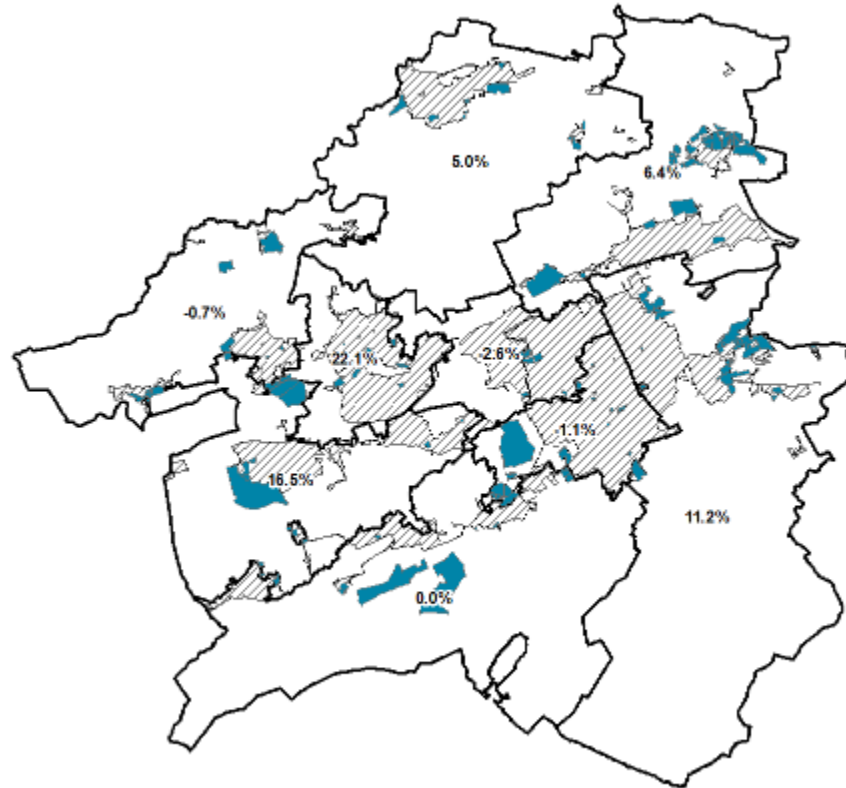


OS data © Crown copyright and database right 2021 OS licence number 100050367

*Data from Scottish Water*

# Strategic Infrastructure Modelling

NRS population projections (Improvement Service has recently made available the NRS 2018 sub-council population projections)



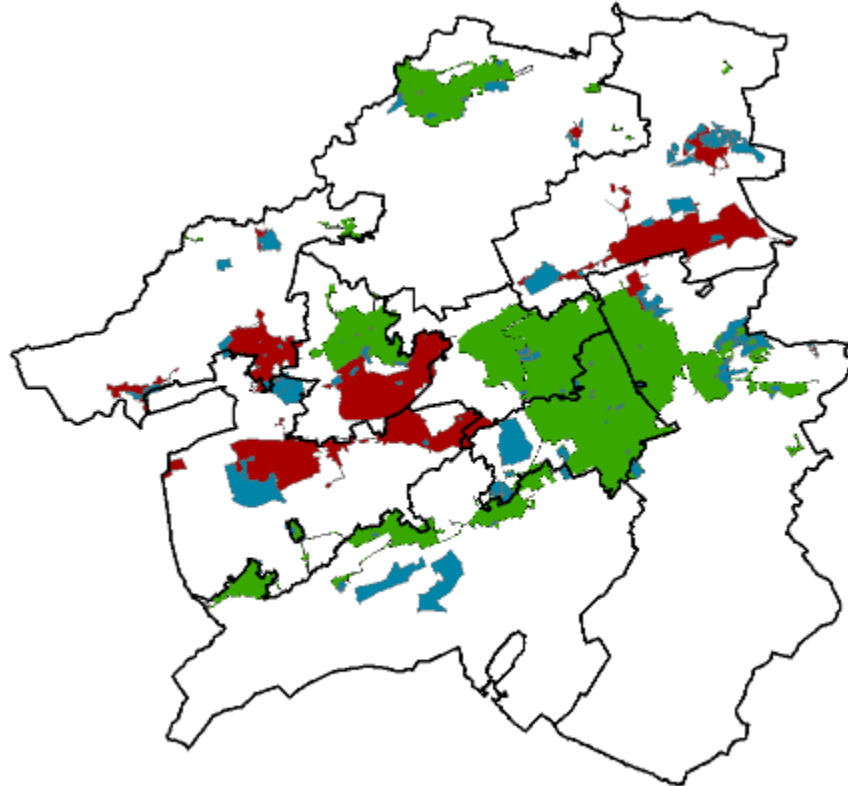
OS data © Crown copyright and database right 2021 OS licence number 100050367

*Data from Scottish Water*

# Strategic Infrastructure Modelling

Scottish Water model the growth at each water and waste water operational area using previously-shown data plus other data from Scottish Water's assets such as current demand (population)

Different scenarios are modelled. In this diagram, the expected growth operational areas are red



OS data © Crown copyright and database right 2021 OS licence number 100050367

*Data from Scottish Water*

# Future Development

---

- Data Standardisation
  - Consistency at data source and move away from central cleaning by IS
  - LDPs, planning applications, land supplies – common categorisation
  - Self-assembling at regional and national scales
- Data Governance and Provision
  - Building a “data ecosystem”
  - Delivery through Digital Planning programme
  - Open Data – requires funding
- Innovation
  - Removal of data cleaning burden
  - Move away from spreadsheet modelling
  - Use of data science techniques – clustering, classification, regression
  - More sophisticated analyses of site constraints – infrastructure and market



*The 'go to' organisation for  
Local Government  
improvement in Scotland*

# Improvement Service Spatial Hub Local Government Data