

Introducing the new Digimap Pilot Collection



THE UNIVERSITY
of EDINBURGH

EDINA

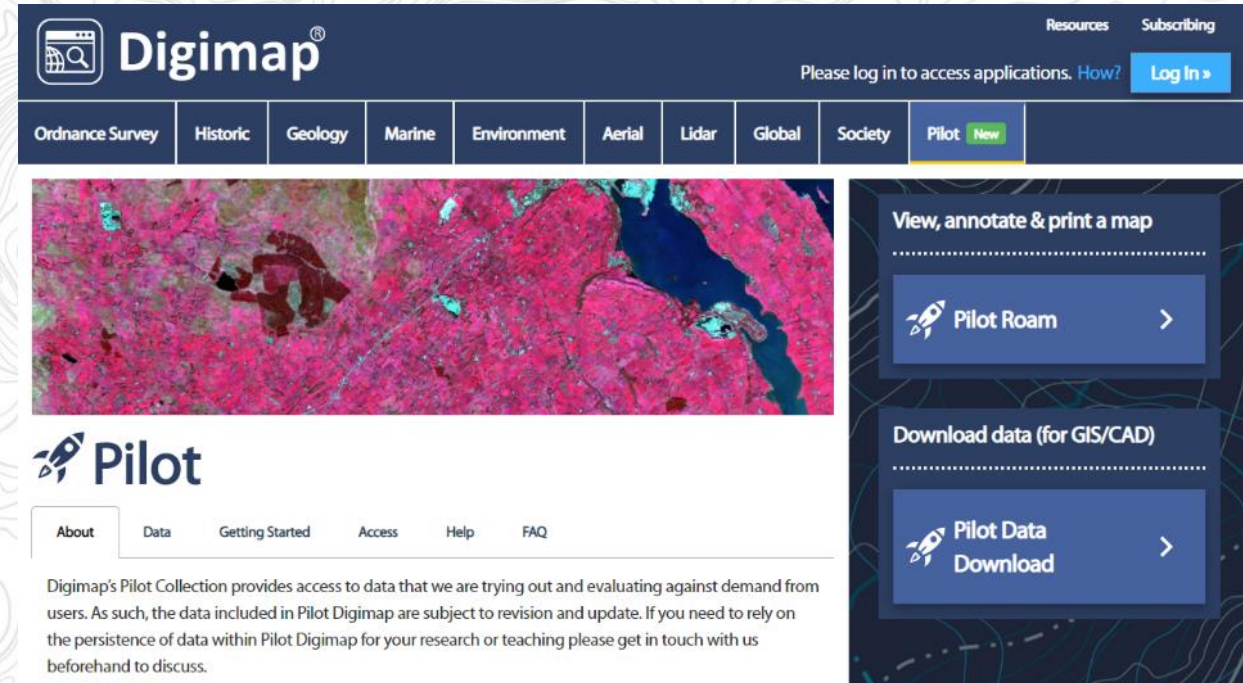


Digimap®

The University of Edinburgh is a charitable body, registered in
Scotland, with registration number SC005336

Pilot Collection

- Purpose of the Pilot Collection
- Access
- Applications
 - Pilot Roam
 - Pilot Download
- Data
 - Geomni
 - Satellite



The screenshot shows the Digimap website interface. At the top, there is a dark blue header with the Digimap logo on the left and navigation links for 'Resources' and 'Subscribing' on the right. Below the header is a horizontal menu with categories: 'Ordnance Survey', 'Historic', 'Geology', 'Marine', 'Environment', 'Aerial', 'Lidar', 'Global', 'Society', and 'Pilot' (which is highlighted with a green 'New' tag). Below the menu is a large image of a colorful, abstract map. To the right of the image is a sidebar with two main sections: 'View, annotate & print a map' containing a 'Pilot Roam' button with a rocket icon, and 'Download data (for GIS/CAD)' containing a 'Pilot Data Download' button with a rocket icon. Below the image is a section titled 'Pilot' with a rocket icon and a navigation menu with links for 'About', 'Data', 'Getting Started', 'Access', 'Help', and 'FAQ'. A paragraph of text follows, stating: 'Digimap's Pilot Collection provides access to data that we are trying out and evaluating against demand from users. As such, the data included in Pilot Digimap are subject to revision and update. If you need to rely on the persistence of data within Pilot Digimap for your research or teaching please get in touch with us beforehand to discuss.'

- Roundup of other (recent) changes to Digimap



THE UNIVERSITY
of EDINBURGH

EDINA



Digimap®

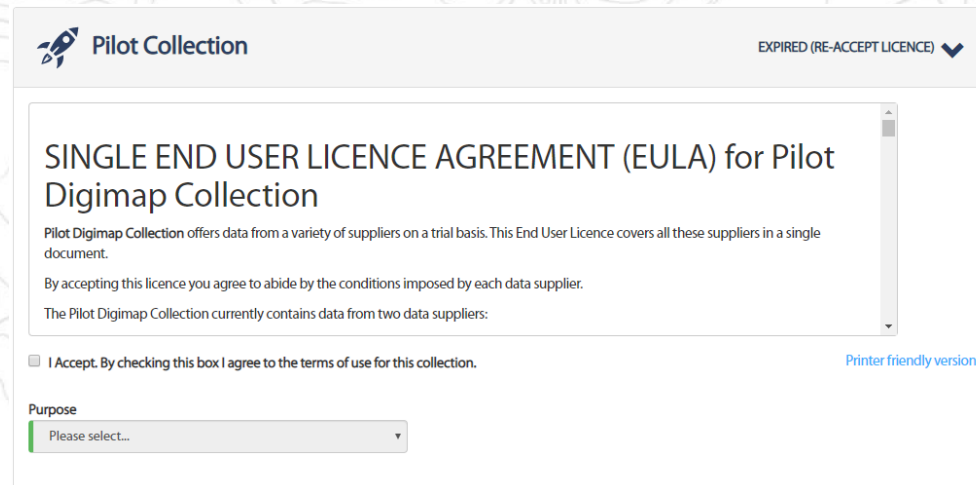
The University of Edinburgh is a charitable body, registered in
Scotland, with registration number SC005336

Purpose

- **Evaluate potential datasets against demand from users**
- **Data may change over time**
- **Data should not be relied upon for research or teaching**

Access

- Free to all institutions that subscribe to at least one existing Digimap Collection
- Users must accept End User Licence Agreement
- Licence agreement will be updated when datasets changed



The screenshot shows a web interface for the 'Pilot Collection'. At the top left is the 'Pilot Collection' logo, and at the top right is the text 'EXPIRED (RE-ACCEPT LICENCE)' with a downward arrow. The main content area is titled 'SINGLE END USER LICENCE AGREEMENT (EULA) for Pilot Digimap Collection'. Below the title, there is a scrollable text area containing the following text: 'Pilot Digimap Collection offers data from a variety of suppliers on a trial basis. This End User Licence covers all these suppliers in a single document. By accepting this licence you agree to abide by the conditions imposed by each data supplier. The Pilot Digimap Collection currently contains data from two data suppliers:'. Below the scrollable area, there is a checkbox labeled 'I Accept. By checking this box I agree to the terms of use for this collection.' and a link for 'Printer friendly version'. At the bottom, there is a 'Purpose' dropdown menu with the text 'Please select...'.

Pilot Roam

- Available datasets listed in the left hand panel
- Legend within data selection panel
- Get Feature Information tool to display attributes
- Standard functions
 - Drawing Tools
 - Measurement Tools
 - Map Information panel
- Star rating to record how useful the data would be to your work

Pilot Download

- **Download all datasets in variety of common formats**
- **Standard area selection tools**

Data - Geomni

- **UKBuildings [GB coverage]**
 - Age
 - Use
- **UKLand [UK coverage]**
- **UKMap [Greater London coverage]**
 - Base
 - Tree Canopy
 - Upper Floors
 - Aerial Imagery
 - Digital Surface Model [download only]
 - Digital Terrain Model [download only]
- **Copyright: *Digital Map Data* © The Geoinformation Group Limited [current year]**
- **Available to end of current academic year (31 July 2020)**

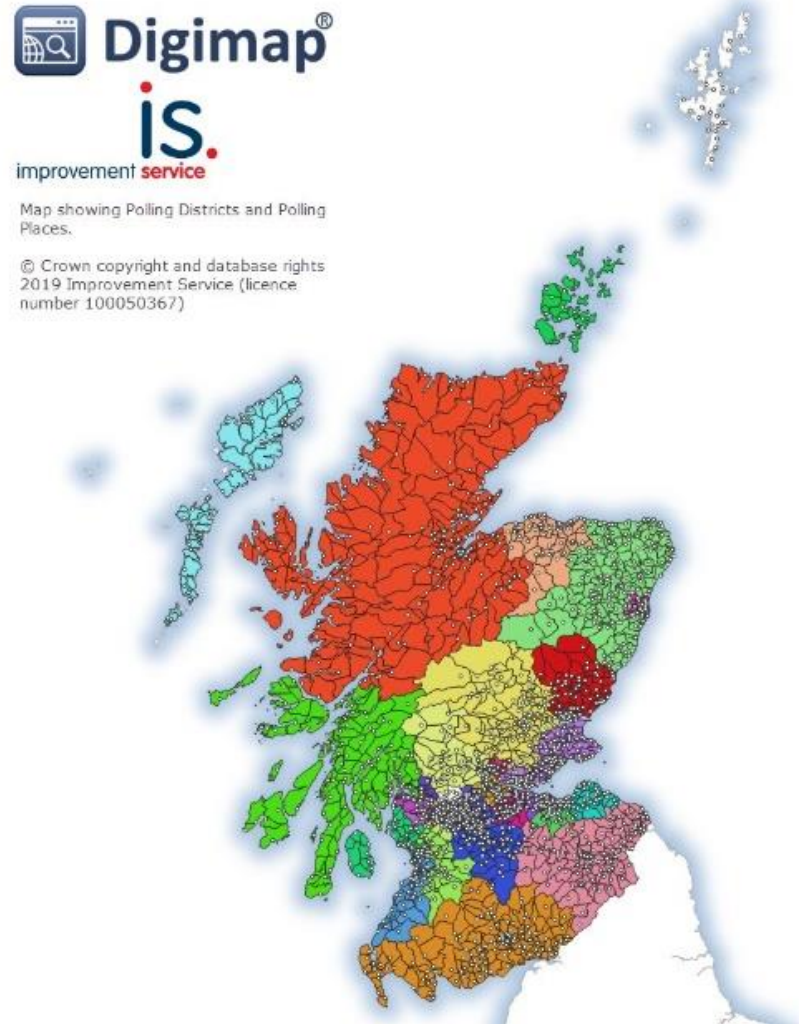
Data - Satellite

- **Sentinel 2 [UK coverage]**
- **Mosaics of data from 2019**
- **Two variants**
 - **Natural Colour: mosaic of bands 4 (red), 3 (green) and 2 (blue)**
 - **Colour Infrared: mosaic of bands 8 (NIR), 4 (red) and 3 (green)**
- **Copyright: © *contains Copernicus data (year of reception)***
- **Available to end of current academic year (31 July 2020)**

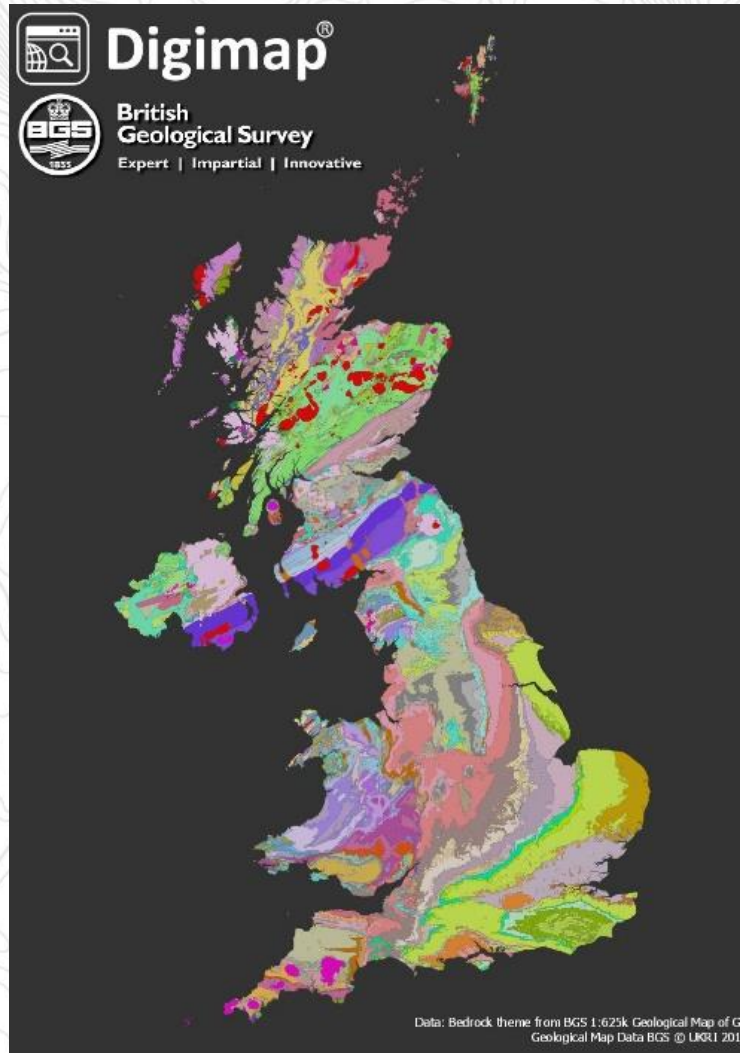
Recent changes

- Overlay customisation respected in print files
- POI available in FGDB and GPKG formats
- 1:625,000 Geology data available in GPKG format
- Scottish Improvement Service data added to OS Download

Scottish Improvement Service data added to OS Download



1:625,000 Geology data available in GPKG format



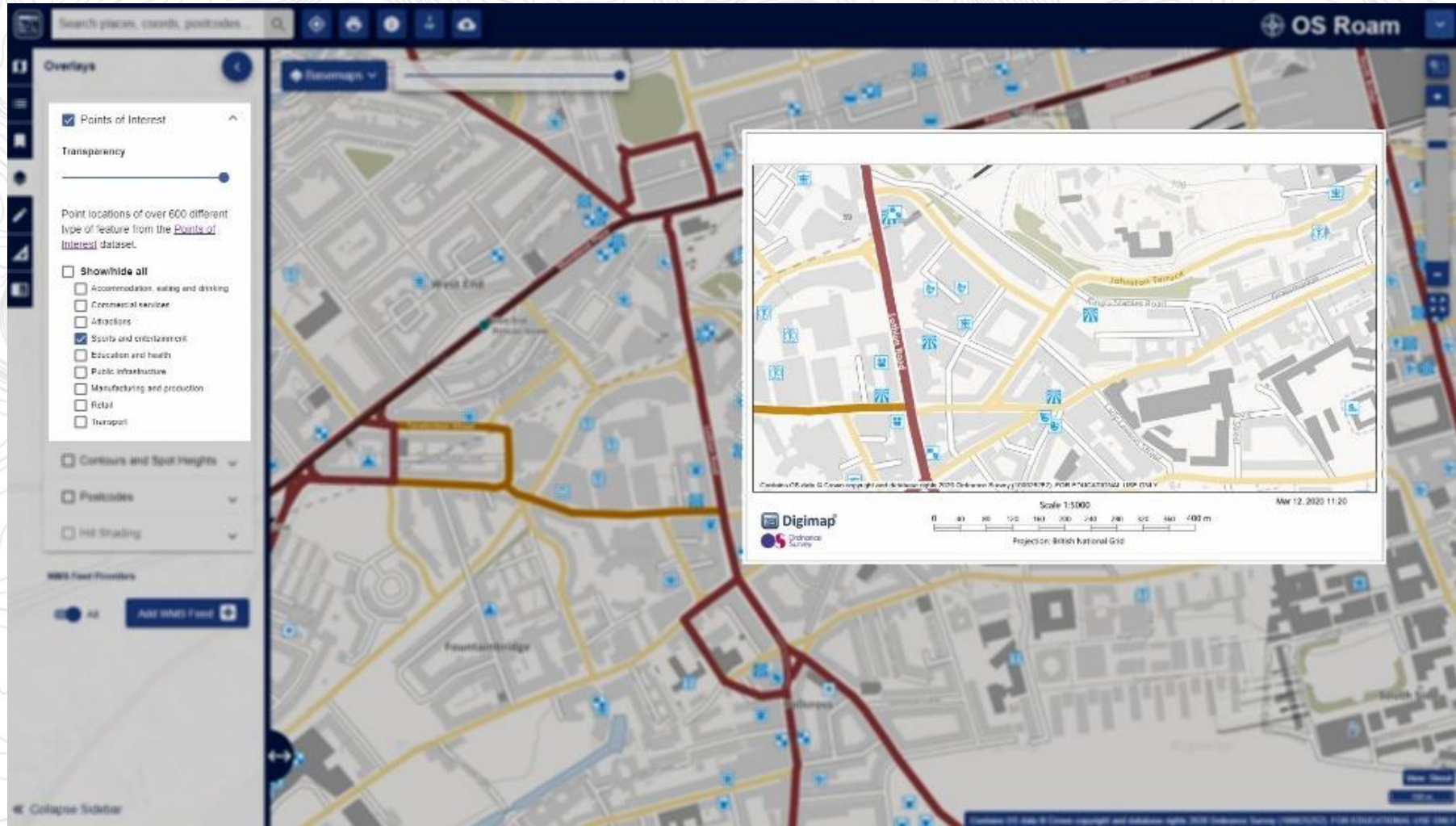
OS Points Of Interest (POI) available in File Geodatabase (FGDB) and Geopackage (GPKG) formats

Basket [X]

Select the Version, Format, Theme and Layers using the drop down menus (▾) where available.

Product Name	Version	Format	Theme	Layers	Clip ?
Points of Interest	December 2019 ▾	Select Format CSV File Geodatabase GeoPackage		All ▾	Not Available 🗑️

Overlay customisation respected in print files



Any questions?



THE UNIVERSITY
of EDINBURGH

EDINA



Digimap®

The University of Edinburgh is a charitable body, registered in
Scotland, with registration number SC005336