



# Digimap<sup>®</sup>



## Global Digimap

Current global map data.

View, annotate and print maps.

Download map data for use in GIS and CAD applications.

Extensive online support and guidance.

Available data includes:

- OpenStreetMap – regularly updated detailed global mapping.
- Natural Earth – small scale map data.
- Collins Bartholomew World Panorama - small scale political map data.

<https://digimap.edina.ac.uk/>

For more information, email [digimap@ed.ac.uk](mailto:digimap@ed.ac.uk)

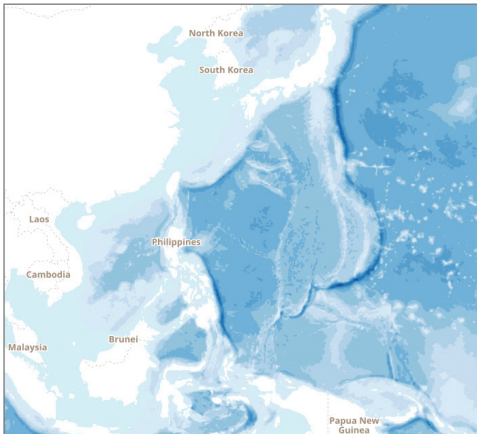
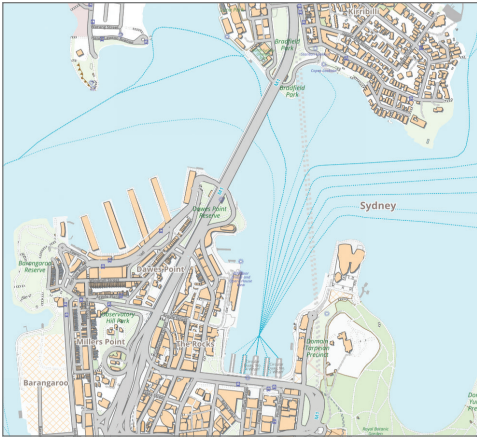
EDINA

# What is Global Digimap?

Global Digimap is an online service delivering global digital map data. Our applications are intuitive, flexible and designed for use in an academic context.

Digimap consists of two applications, one for viewing and printing maps, the other for downloading digital map data:

- Use **Roam** to view, annotate and print maps.
- Use **Data Download** to download map data and load it into GIS or CAD software for further analysis and manipulation.



Sydney: Map data © OpenStreetMap contributors  
Philippines: Made with Natural Earth.

# Map data includes

- OpenStreetMap – regularly updated detailed global mapping.
- Natural Earth – small scale mapping data.
- Collins Bartholomew World Panorama - small scale political mapping data.

# User Support

Comprehensive help is available in Digimap applications. Regular webinars are available to all users. Each subscribing institution has local user support staff. Any user can contact the EDINA helpdesk at [digimap@ed.ac.uk](mailto:digimap@ed.ac.uk).

# Access

Access is free to staff and students of subscribing institutions. For further information on subscriptions, available data, and using the service, go to:

<https://digimap.edina.ac.uk/>

# Follow us



<http://digimap.blogs.edina.ac.uk/>



[https://twitter.com/EDINA\\_Digimap](https://twitter.com/EDINA_Digimap)



<https://www.facebook.com/EDINADigimap>



<https://www.youtube.com/EDINADigimap>



OpenStreetMap is a map of the world, created by people like you and free to use under an open licence.

<https://www.openstreetmap.org>



Collins Bartholomew are a leading provider of digital map data.

<https://www.collinsbartholomew.com>



# Natural Earth

Natural Earth is a public domain map in a range of scales, with vector and raster formats. <https://www.naturalearthdata.com>



EDINA is a centre for digital expertise and online service delivery at the University of Edinburgh.

<https://edina.ac.uk>