



**Digimap<sup>®</sup>**



## Marine Digimap

Marine and coastal maps and data of Great Britain.

View, annotate and print maps.

Download data for use in GIS and CAD applications.

Extensive online support and guidance.

Available data includes:

- Detailed vector digital marine mapping data
- Geocoded scanned UK Admiralty Charts at various scales
- Bathymetry data

**OceanWise**

**EDiNA**

<https://digimap.edina.ac.uk/>

For more information, email [digimap@ed.ac.uk](mailto:digimap@ed.ac.uk)

# What is Marine Digimap?

Marine Digimap is an online service delivering digital map data from OceanWise. Our applications are intuitive, flexible and designed for use in an academic context.

Marine Digimap has three key applications, two for browsing and printing maps, the other for downloading map data:

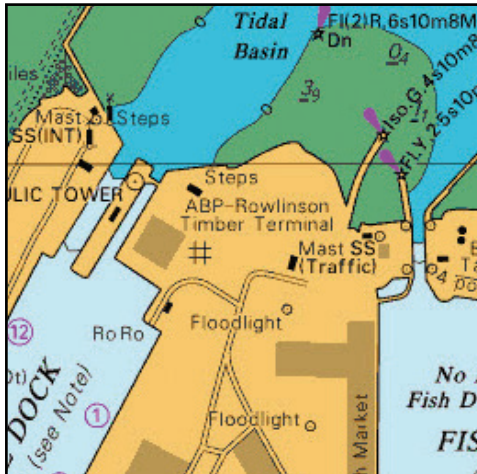
- Use **Marine Roam** to view, annotate and print maps of Marine Themes Vector data.
- Use **Chart Roam** to view, annotate and print maps of Marine Themes Vector data.
- Use **Data Download** to download digital map data and load it into GIS or CAD software for further analysis and manipulation.

## Map data

### Marine Themes Vector

Detailed, authoritative vector digital marine mapping data grouped in themes:

- Bathymetry and land
- Obstructions and shipwrecks
- Offshore features
- Navigational features
- Transport features
- Climate and oceanography
- Tides and tidal currents



## Raster Charts

Scanned and geocoded images of the Admiralty Chart series, ideal for reference and backdrop mapping. Not to be used for navigation.

## Bathymetry

Vector bathymetry data at two scales. Useful for analysis of sea floor depths and building detailed 3D ocean floor models.

## User Support

Comprehensive help is available in Digimap applications. Regular webinars are available to all users. Each subscribing institution has local user support staff. Any user can contact the EDINA helpdesk at [digimap@ed.ac.uk](mailto:digimap@ed.ac.uk).

## Access

Access is free to staff and students of subscribing institutions. For further information on subscriptions, available data, and using the service, go to: <https://digimap.edina.ac.uk/>

## Follow us



<http://digimap.blogs.edina.ac.uk/>



[https://twitter.com/EDINA\\_Digimap](https://twitter.com/EDINA_Digimap)



<https://www.facebook.com/EDINADigimap>



<https://www.youtube.com/EDINADigimap>



OceanWise provides detailed marine mapping data and intelligent, high-quality geographic information for the marine environment and coastal zone.



EDINA is a centre for digital expertise and online service delivery at the University of Edinburgh.  
<https://edina.ac.uk>