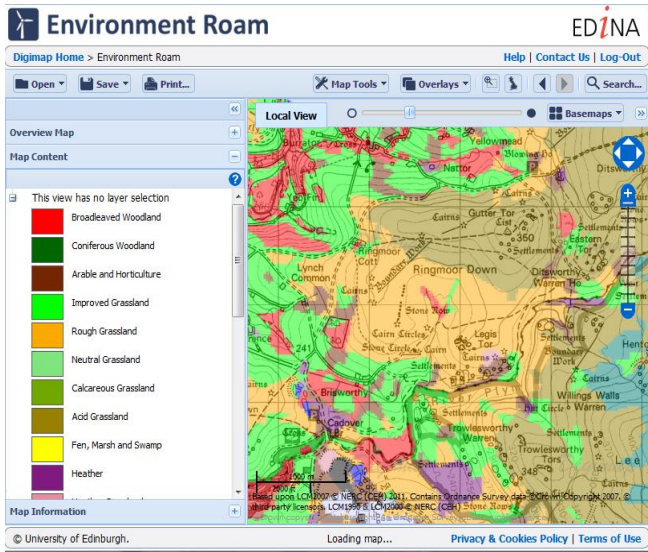
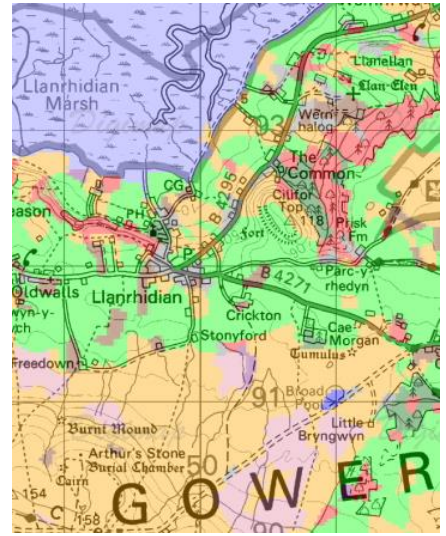


What is Environment Roam?



Environment Roam is an online mapping tool, where you view, annotate, save and print Land Cover maps from 2007, 2000 & 1997.

It offers various fixed-scale map views and PDF/PNG/JPG files for printing can be generated for A4-A0 paper sizes.

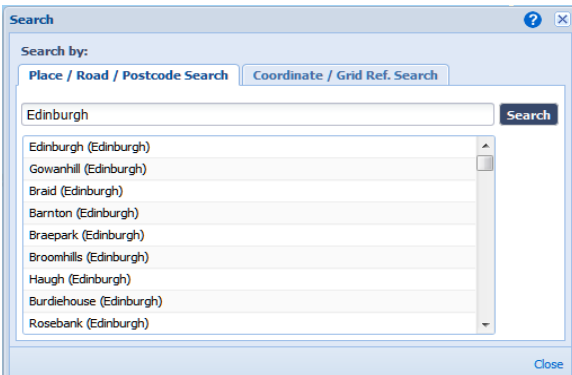


Get started

Go to: <http://digimap.edina.ac.uk/>

- Click Login and use your institutional login details.
- If you don't have an active registration, you'll be prompted to register.
- Hover over Environment, then click Environment Roam. You may need to agree to the licence, if you haven't done so already.

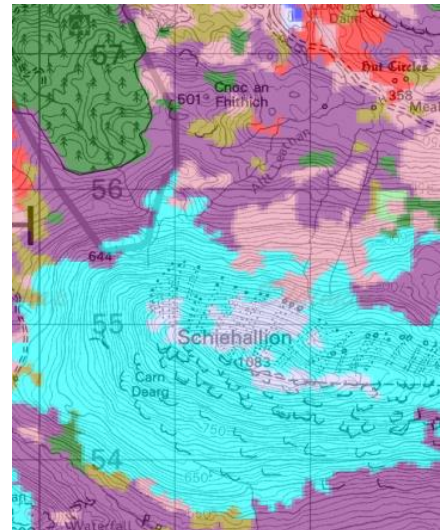
Search



There are a range of search options, see Search on right.

- Full postcode
- Place name
- Road/Street name
- Grid reference
- Easting/Northing
- Lat/Long

Enter your terms and click search



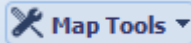
Move around

- Zoom and pan using the tools on the map.
- Zoom in by double clicking.
- Zoom in/out by scrolling mouse wheel.
- Pan map by clicking with left mouse button and dragging.



Features

Annotate



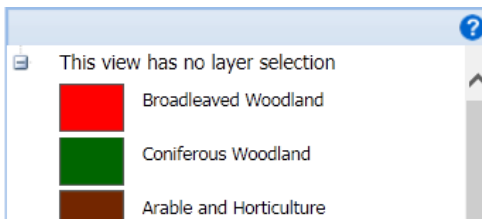
- Use **Annotation tools** to add symbols, shapes, lines, labels and measurements to your map.
- You can import your own data. See **Open > Annotations from file**. Format options are SHAPE, KML, GPX, CSV, GeoJSON.

Hillshading

- Get a clearer view of the terrain.
- Find in **Overlays**.



Map Content



Found to the left of the map, **Map Content** enables you to view a map legend.

Feature Information

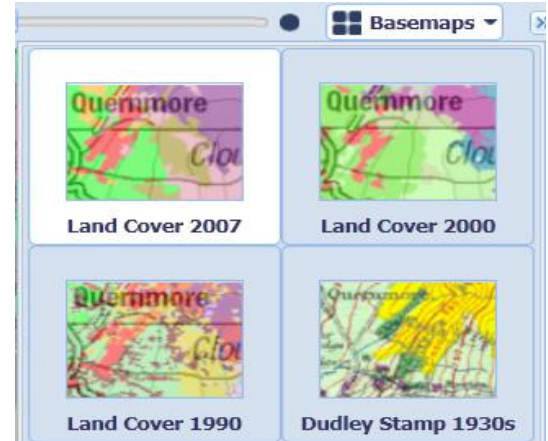
See land cover information on a landmark, spot or feature.



- click on the **"i"** button at the top of the map.
- Click on the map.
- Hover over the red pin for information – see below

Feature Information		
Feature(s)	Name	Value
Land Cover Map 2007	Class	Bog

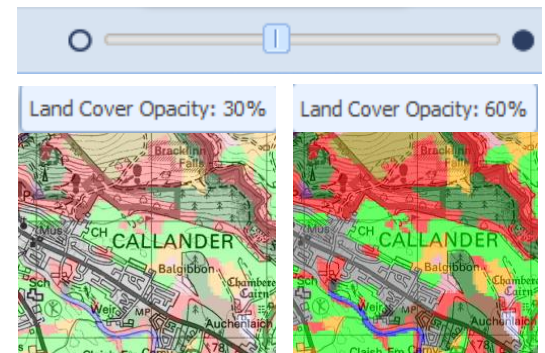
Basemaps



- By default, Environment Roam displays the 2007 Land Cover map.
- The Basemaps area allows you to select one of the three available Land Cover maps for display; 2007, 2000 or 1990, plus Dudley Stamp Land Use maps from the 1930s.

Slider

Adjust the opacity of your Land Cover map using the slider at the top of the map.



Save



- Click Save > My Map to save maps, with annotations.
- Enter a title and click Save.
- Click Open to view saved maps.
- Select a map to view or delete.

Print



- Generate a file for printing.
- Available print size A4 to A0.
- PDF/PNG/JPG formats.
- Other options include: select print scale, add title, legend & annotations